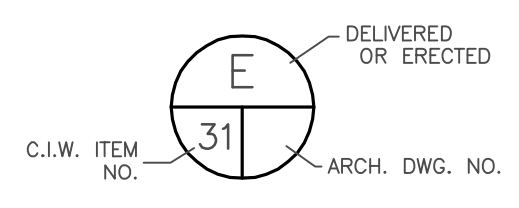


NOTE:
ALL MATERIAL TO BE TYPE 304
STAINLESS STEEL. #4 BRUSHED FINISH (U/N),
WELD WITH APPROPRIATE ELECTRODES.

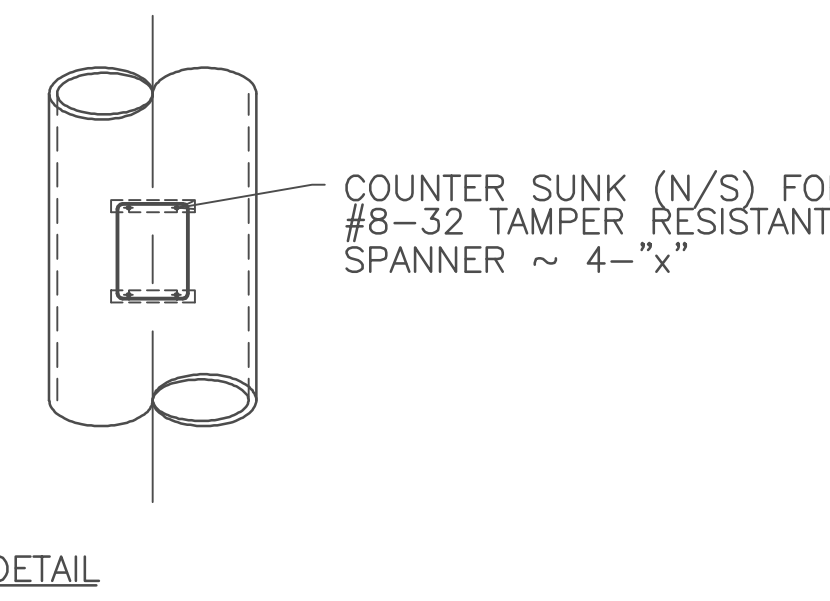
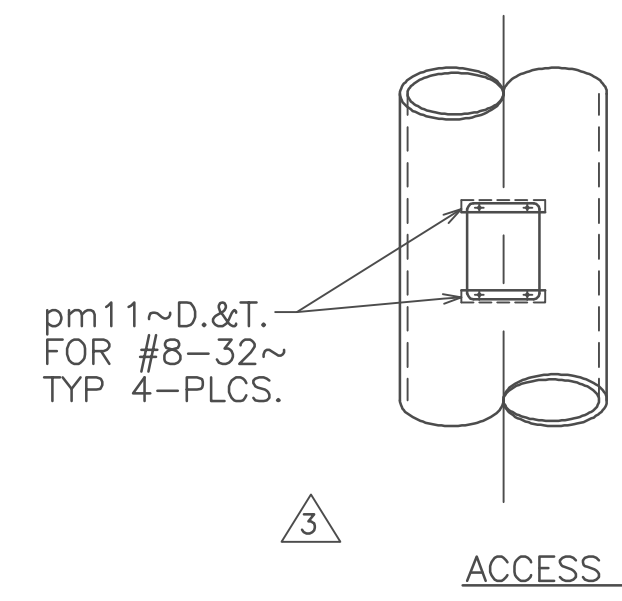
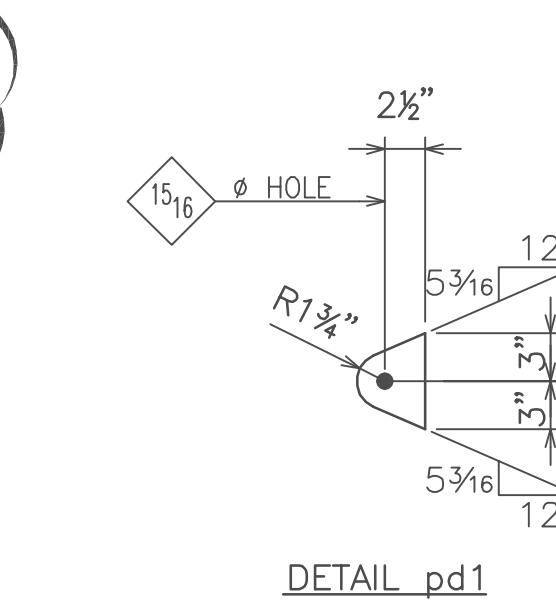
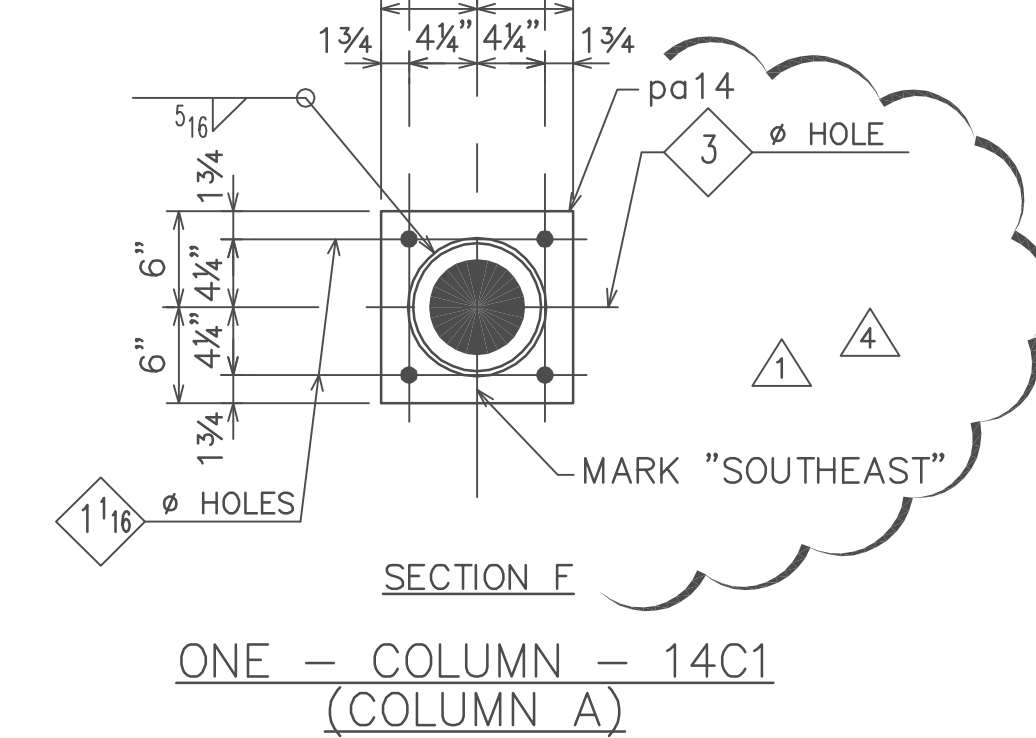
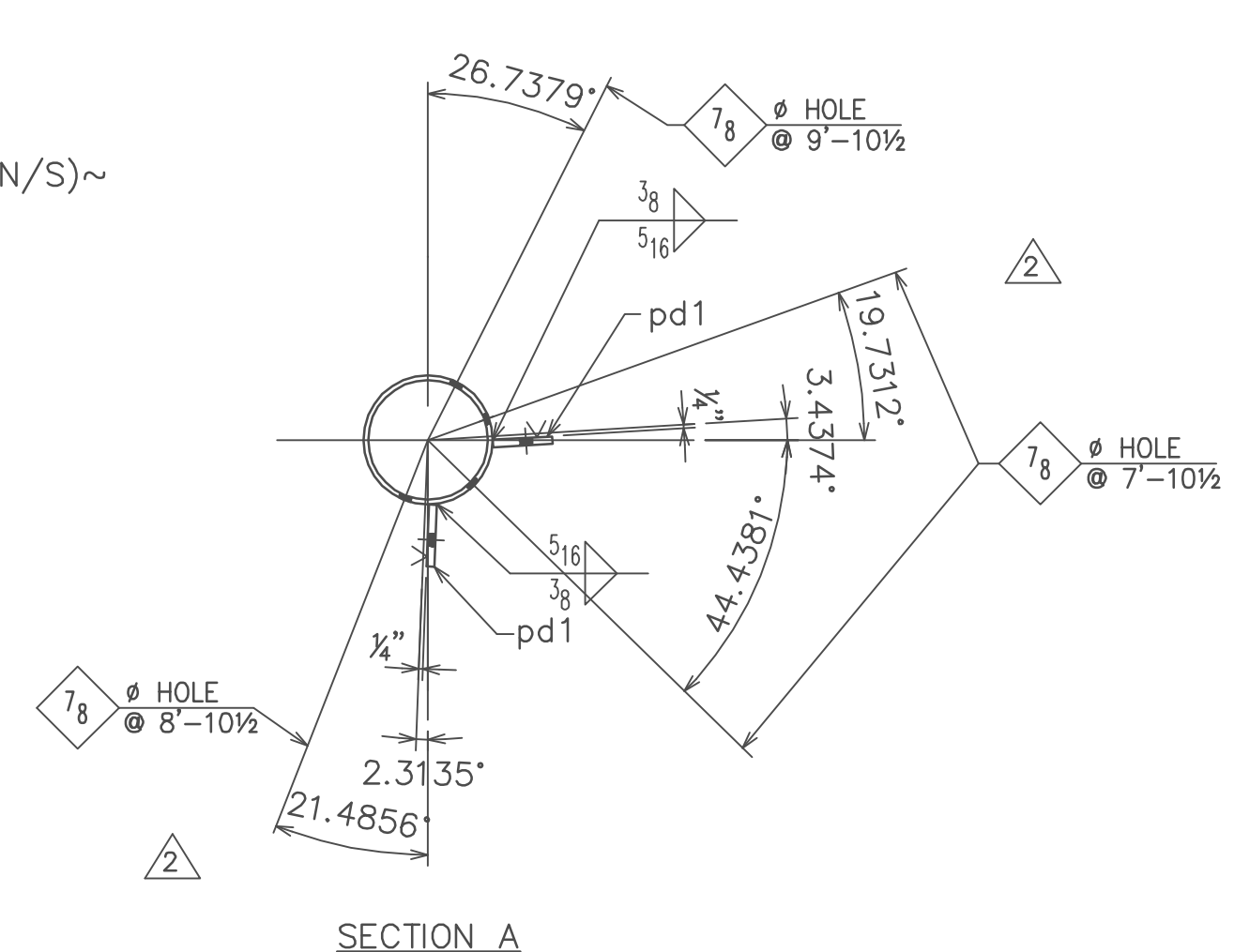
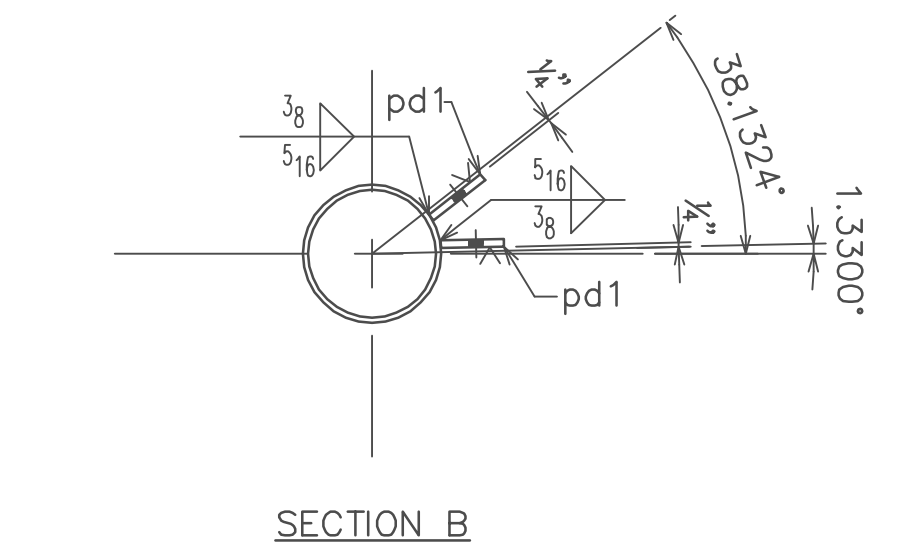
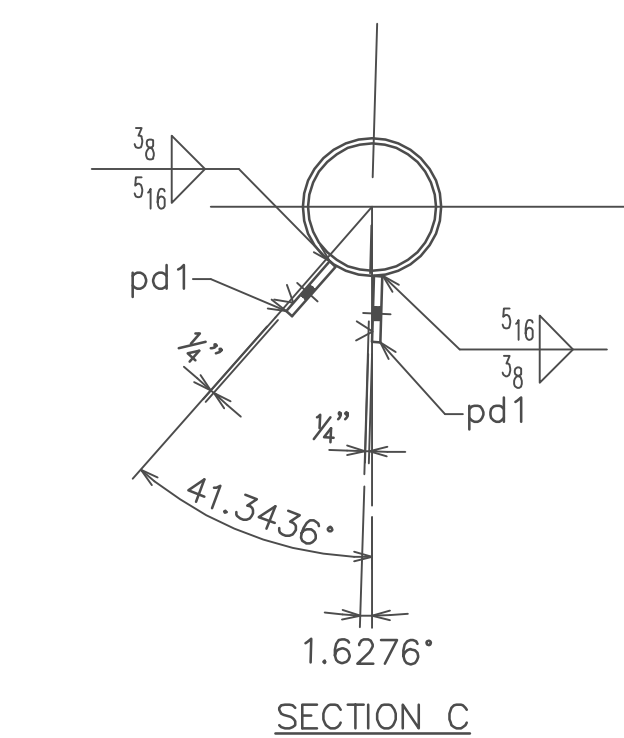
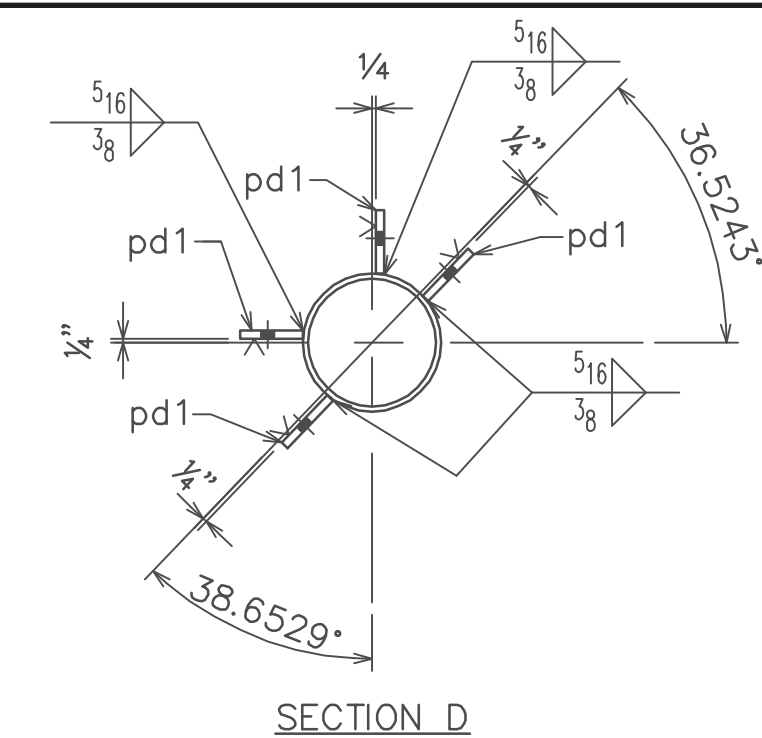
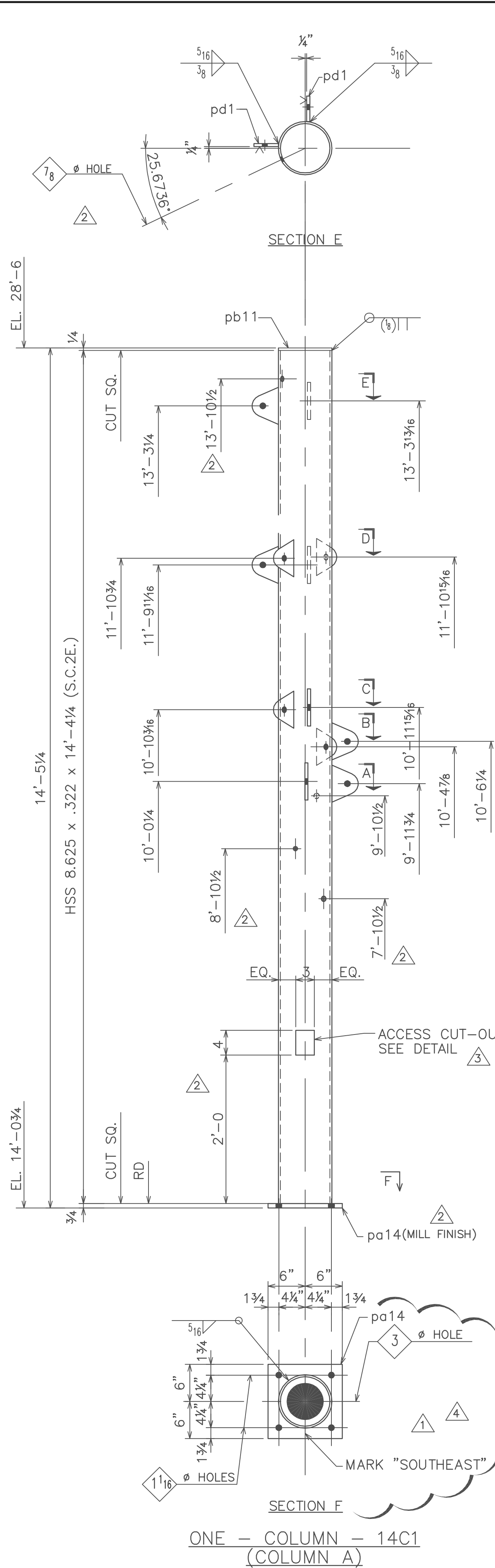
BILL OF MATERIAL

MARK	QUAN.	SECTION	FT.	IN.
4C1	ONE	HSS 8.625 x .500	15	5 7/8
pa1	1	PL 3/4x12 (MILL FINISH)	1	11 1/2
pb1	1	PL 1/2x11 5/8	1	4 5/8
pc1	1	PL 1/4x8 1/4	0	9 1/8
pd1	6	PL 1/2x4 1/4	0	6
ma1	12	3/8" S.S. ROD	0	1

ISSUED FOR THE FOLLOWING		APPROVED AS NOTED	PROJECT: THE YARDS LOCATION: SOUTHEAST FEDERAL CENTER	DRAWN BY RGY
NO.		REVISIONS	DATE	DATE 12/17/09
ADDED MILL FINISH ON BASE PLATE & REMOVE CONDUIT HOLE			3/25	CHECKED ALY
CONTRACTOR: SMOOT CONSTRUCTION COMPANY		CRESCENT IRON WORKS		CONTRACT NO. J30
APPROVED		OPEN HOLES: 1/4" U/N	4901 GRAYS AVE. PHILA., PA. 19143	DWG. NO. 4
BOLTS:		PAINT: NONE		



FABRICATION LEAD TIME FOR THIS ITEM(S)
IS 16-20 WEEKS FROM APPROVAL AND/OR FIELD
MEASUREMENT.



BILL OF MATERIAL

MARK	QUAN.	SECTION	FT.	IN.
14C1	ONE	HSS 8.625 x .322	14	4 1/4
1	1	PL 3/4x12 (MILL FINISH)	1	0
2	1	PL 1/4x8 5/8	0	6
3	12	PL 1/2x4 1/4	0	6
4	2	PL 1/8x1 1/2	0	3 1/2
x	4	#8-32 McMASTER-CARR #94063A197	0	0 3/4

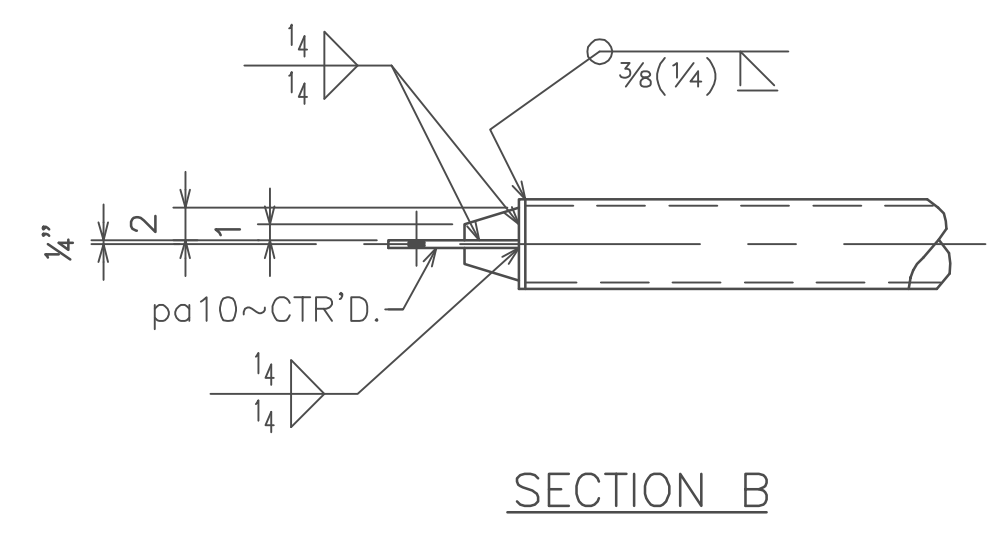
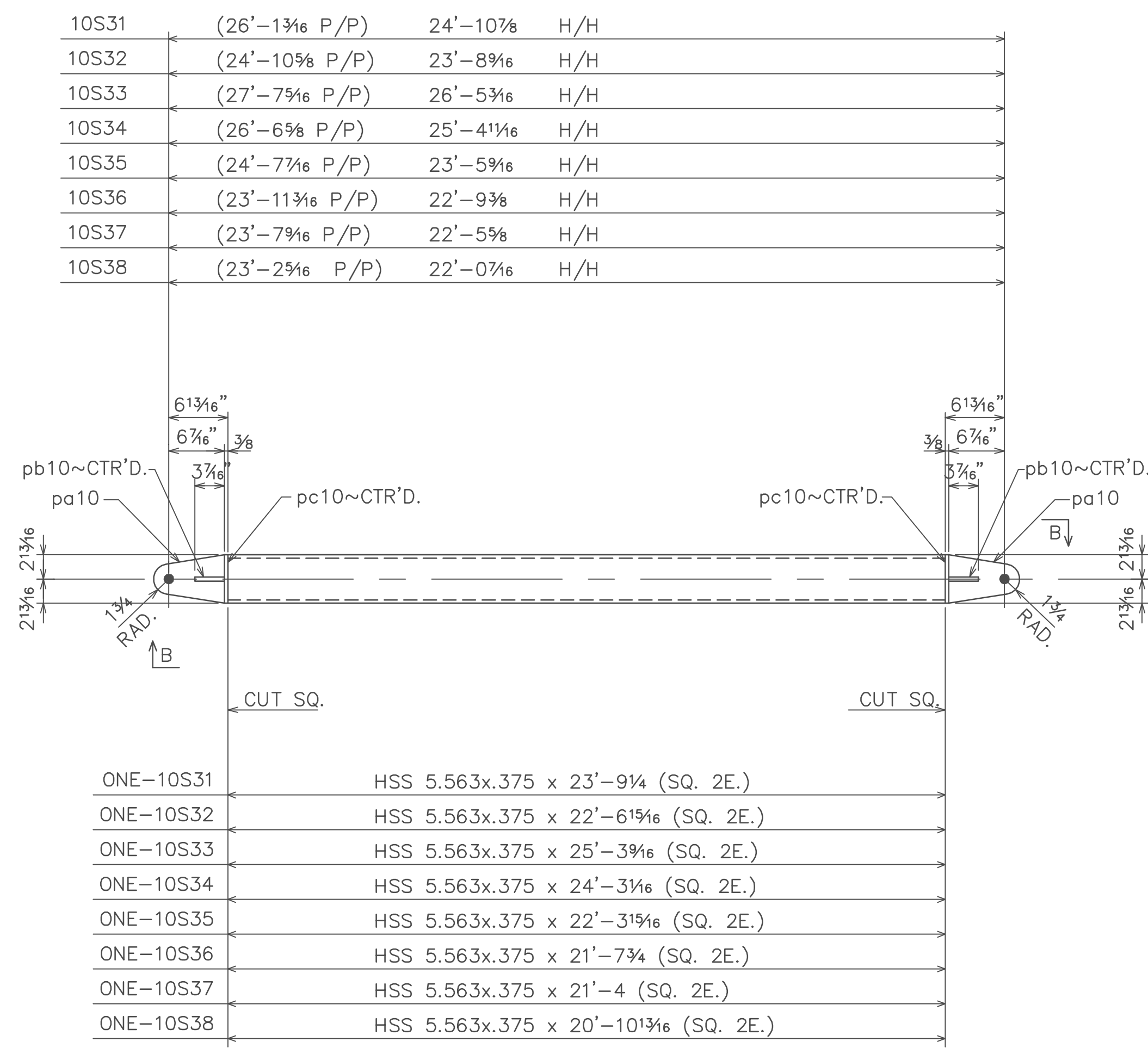
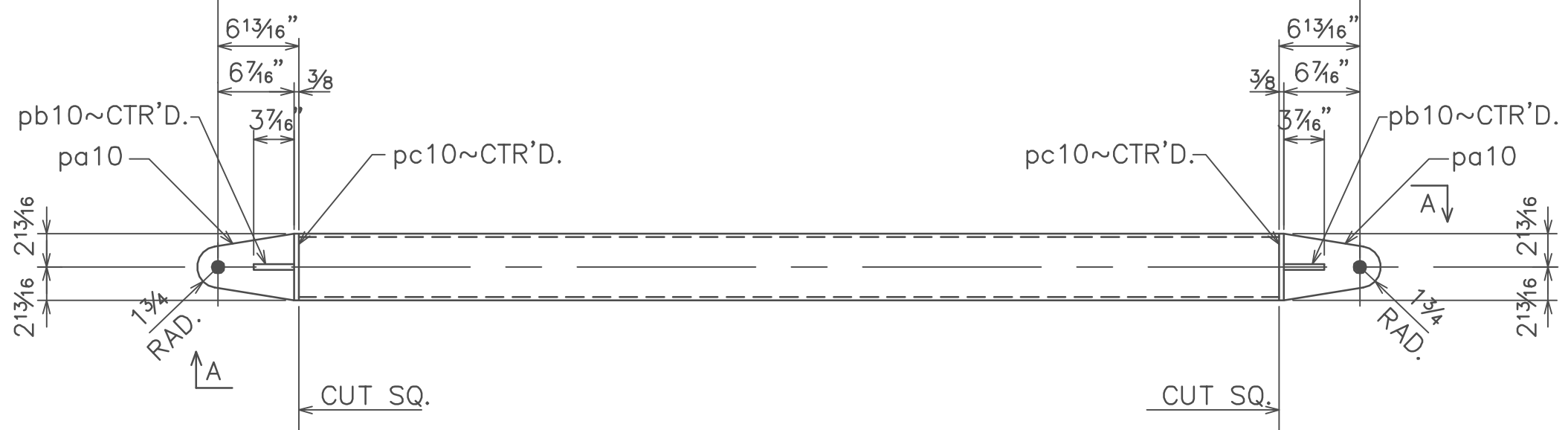
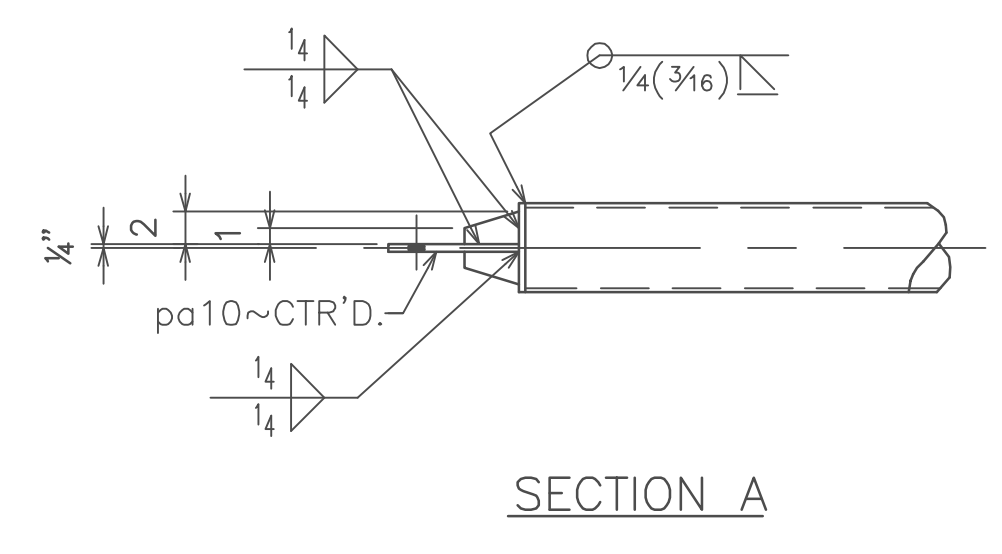
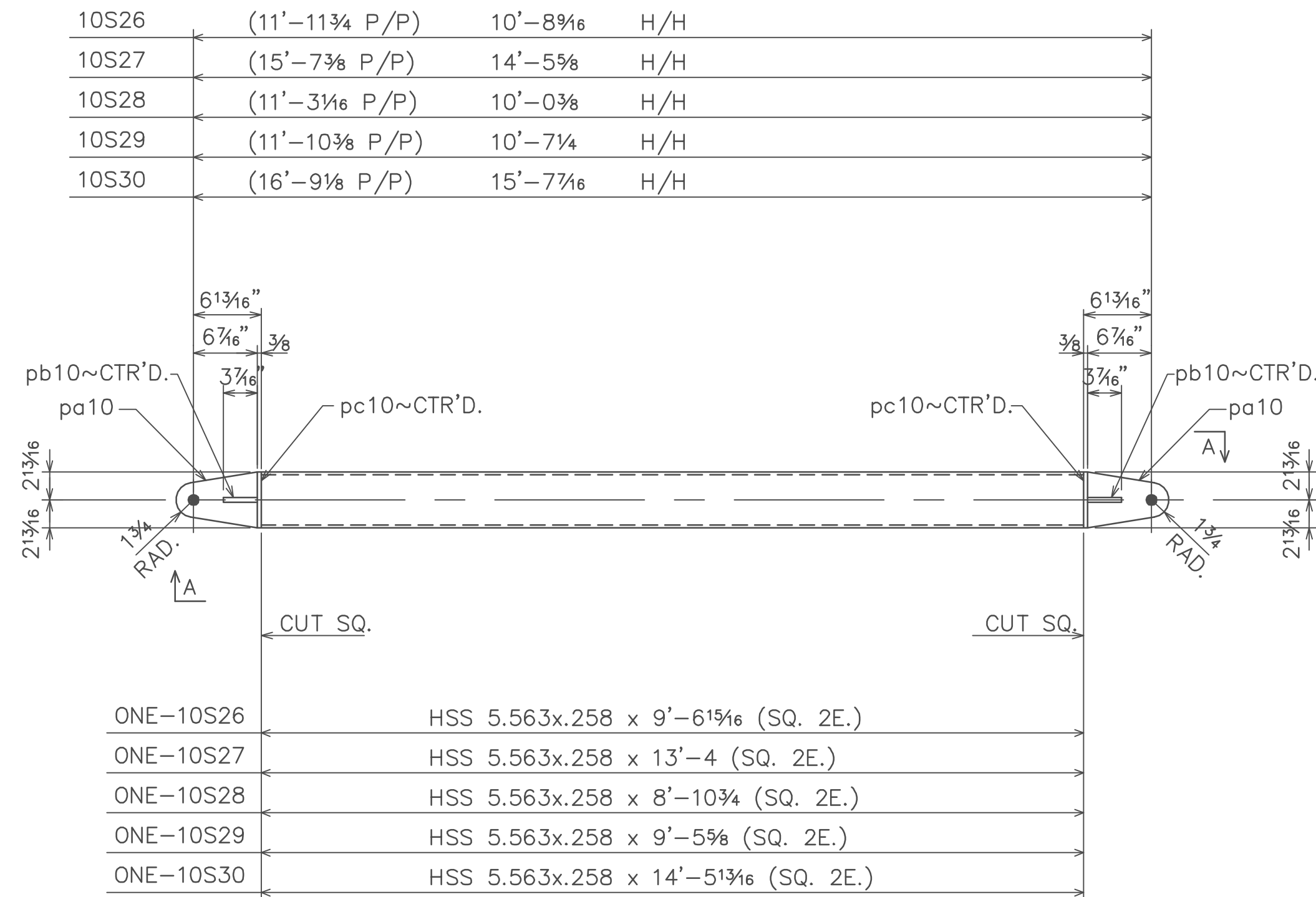
NOTE:
 ALL MATERIAL TO BE TYPE 304 STAINLESS STEEL. #4 BRUSHED FINISH (U/N). WELD WITH APPROPRIATE ELECTRODES.
 > INDICATES "STRIPE THIS SIDE"
 RD INDICATES RUNNING DIM.

NO.	REVISIONS	DATE
4	REVISE CONDUIT HOLE SIZE & LOCATION	5/21
3	ADD ACCESS CUT OUT DETAIL	4/12
2	ADD HOLES FOR LIGHTING ATTACHMENT & HAND HOLE (ACCESS CUT OUT) PER SK-603 & SK-603A (03/04/10)	3/25
1	ADDED CONDUIT HOLES PER FIELD SURVEY OF 3/11/10	3/15

ISSUED FOR THE FOLLOWING	APPROVED AS NOTED	PROJECT: THE YARDS LOCATION: SOUTHEAST FEDERAL CENTER	DRAWN BY RGY
		ARCHITECT: MFPF, LLC.	DATE 1/7/10
		CONTRACTOR: SMOOT CONSTRUCTION COMPANY	CHECKED ALY
		CRESCENT IRON WORKS 4901 GRAYS AVE. PHILA., PA. 19143	CONTRACT NO. J30
	APPROVED	OPEN HOLES: 1/8" U/N	DWG. NO. 14
		BOLTS:	
		PAINT: NONE	

FABRICATION LEAD TIME FOR THIS ITEM(S) IS 16-20 WEEKS FROM APPROVAL AND/OR FIELD MEASUREMENT.

10S1	(18'-3 3/8 P/P)	17'-1 1/2	H/H
10S2	(16'-8 P/P)	15'-6 3/16	H/H
10S3	(19'-10 1/4 P/P)	18'-8 3/16	H/H
10S4	(17'-2 1/16 P/P)	16'-0 3/8	H/H
10S5	(19'-2 7/16 P/P)	18'-0 7/16	H/H
10S6	(10'-11 13/16 P/P)	9'-9 15/16	H/H
10S7	(10'-5 7/16 P/P)	9'-3 3/8	H/H
10S8	(17'-0 1/16 P/P)	15'-10 1/16	H/H
10S9	(11'-11 1/16 P/P)	10'-8 3/16	H/H
10S10	(16'-10 3/8 P/P)	15'-8 1/2	H/H
10S11	(17'-2 3/8 P/P)	16'-0 1/16	H/H
10S12	(23'-9 9/16 P/P)	22'-7 15/16	H/H
10S13	(23'-9 3/8 P/P)	22'-7 3/4	H/H
10S14	(16'-9 3/4 P/P)	15'-7 3/8	H/H
10S16	(16'-7 7/16 P/P)	15'-5 3/4	H/H
10S17	(11'-10 7/16 P/P)	10'-7 1/4	H/H
10S18	(19'-8 15/16 P/P)	18'-6 3/16	H/H
10S19	(18'-5 3/4 P/P)	17'-3 1/16	H/H
10S20	(19'-7 7/16 P/P)	18'-4 1/16	H/H
10S21	(19'-5 3/4 P/P)	18'-2 1/16	H/H
10S22	(18'-1 3/16 P/P)	16'-11 1/4	H/H
10S23	(22'-5 1/16 P/P)	21'-2 15/16	H/H
10S24	(22'-3 3/16 P/P)	21'-0 7/8	H/H
10S25	(19'-6 3/16 P/P)	18'-3	H/H



ONE-10S1	HSS 5.563x.258 x 15'-11 7/8 (SQ. 2E.)
ONE-10S2	HSS 5.563x.258 x 14'-4 9/16 (SQ. 2E.)
ONE-10S3	HSS 5.563x.258 x 17'-6 9/16 (SQ. 2E.)
5-10S4	HSS 5.563x.258 x 14'-10 3/4 (SQ. 2E.)
ONE-10S5	HSS 5.563x.258 x 16'-10 3/16 (SQ. 2E.)
ONE-10S6	HSS 5.563x.258 x 8'-8 9/16 (SQ. 2E.)
ONE-10S7	HSS 5.563x.258 x 8'-2 (SQ. 2E.)
3-10S8	HSS 5.563x.258 x 14'-9 1/16 (SQ. 2E.)
2-10S9	HSS 5.563x.258 x 9'-6 3/16 (SQ. 2E.)
4-10S10	HSS 5.563x.258 x 14'-6 7/8 (SQ. 2E.)
5-10S11	HSS 5.563x.258 x 14'-11 1/16 (SQ. 2E.)
4-10S12	HSS 5.563x.258 x 21'-6 9/16 (SQ. 2E.)
4-10S13	HSS 5.563x.258 x 21'-6 1/8 (SQ. 2E.)
4-10S14	HSS 5.563x.258 x 14'-5 3/4 (SQ. 2E.)
4-10S16	HSS 5.563x.258 x 14'-4 1/8 (SQ. 2E.)
ONE-10S17	HSS 5.563x.258 x 9'-5 5/8 (SQ. 2E.)
ONE-10S18	HSS 5.563x.258 x 17'-4 15/16 (SQ. 2E.)
ONE-10S19	HSS 5.563x.258 x 16'-2 1/16 (SQ. 2E.)
2-10S20	HSS 5.563x.258 x 17'-3 1/16 (SQ. 2E.)
2-10S21	HSS 5.563x.258 x 17'-1 3/16 (SQ. 2E.)
2-10S22	HSS 5.563x.258 x 15'-9 3/8 (SQ. 2E.)
ONE-10S23	HSS 5.563x.258 x 20'-1 9/16 (SQ. 2E.)
ONE-10S24	HSS 5.563x.258 x 19'-11 1/4 (SQ. 2E.)
ONE-10S25	HSS 5.563x.258 x 17'-1 3/8 (SQ. 2E.)

BILL OF MATERIAL

MARK	QUAN.	SECTION	FT.	IN.
10S1	ONE	HSS 5.563 x .258	15	11 7/8
10S2	ONE	HSS 5.563 x .258	14	4 9/16
10S3	ONE	HSS 5.563 x .258	17	6 9/16
10S4	5	HSS 5.563 x .258	14	10 3/4
10S5	ONE	HSS 5.563 x .258	16	10 13/16
10S6	ONE	HSS 5.563 x .258	8	8 9/16
10S7	ONE	HSS 5.563 x .258	8	2
10S8	3	HSS 5.563 x .258	14	9 1/16
10S9	2	HSS 5.563 x .258	9	6 9/16
10S10	4	HSS 5.563 x .258	14	6 7/8
10S11	5	HSS 5.563 x .258	14	11 1/16
10S12	4	HSS 5.563 x .258	21	6 9/16
10S13	4	HSS 5.563 x .258	21	6 1/8
10S14	4	HSS 5.563 x .258	14	5 3/4
10S16	4	HSS 5.563 x .258	14	4 1/8
10S17	ONE	HSS 5.563 x .258	9	5 5/8
10S18	ONE	HSS 5.563 x .258	17	4 15/16
10S19	ONE	HSS 5.563 x .258	16	2 1/16
10S20	2	HSS 5.563 x .258	17	3 1/16
10S21	2	HSS 5.563 x .258	17	1 3/16
10S22	2	HSS 5.563 x .258	15	9 9/16
10S23	ONE	HSS 5.563 x .258	20	1 9/16
10S24	ONE	HSS 5.563 x .258	19	11 1/4
10S25	ONE	HSS 5.563 x .258	17	1 3/8
10S26	ONE	HSS 5.563 x .258	9	6 15/16
10S27	ONE	HSS 5.563 x .258	13	4
10S28	ONE	HSS 5.563 x .258	8	10 3/4
10S29	ONE	HSS 5.563 x .258	9	5 5/8
10S30	ONE	HSS 5.563 x .258	14	5 13/16
pa10	116	PL 1/2x5 9/16	0	8 3/16
pb10	232	PL 1/2x2	0	3 7/16
pc10	116	PL 3/8x5 9/16		
10S31	ONE	HSS 5.563 x .375	23	9 1/4
10S32	ONE	HSS 5.563 x .375	22	6 15/16
10S33	ONE	HSS 5.563 x .375	25	3 9/16
10S34	ONE	HSS 5.563 x .375	24	3 1/16
10S35	ONE	HSS 5.563 x .375	22	3 15/16
10S36	ONE	HSS 5.563 x .375	21	7 3/4
10S37	ONE	HSS 5.563 x .375	21	4
10S38	ONE	HSS 5.563 x .375	20	10 13/16
pa10	16			
pb10	32			
pc10	16			

NOTE:
ALL MATERIAL TO BE TYPE 304
STAINLESS STEEL, #4 BRUSHED FINISH.
WELD WITH APPROPRIATE ELECTRODES

NO.	REVISIONS	DATE
ISSUED FOR THE FOLLOWING		
APPROVED AS NOTED	PROJECT: THE YARDS	DRAWN BY: DAN
	LOCATION: SOUTHEAST FEDERAL CENTER	DATE: 12/21/09
	ARCHITECT: MFPF, LLC.	CHECKED: RGY
	CONTRACTOR: SMOOT CONSTRUCTION COMPANY	CONTRACT NO: J30
	CRESCENT IRON WORKS	
	4901 GRAYS AVE. PHILA., PA. 19143	
APPROVED	OPEN HOLES: 15/168 UN	DWG. NO: 10
	BOLTS:	
	PAINT: NONE	

FABRICATION LEAD TIME FOR THIS ITEM(S)
IS 16-20 WEEKS FROM APPROVAL AND/OR FIELD
MEASUREMENT.

