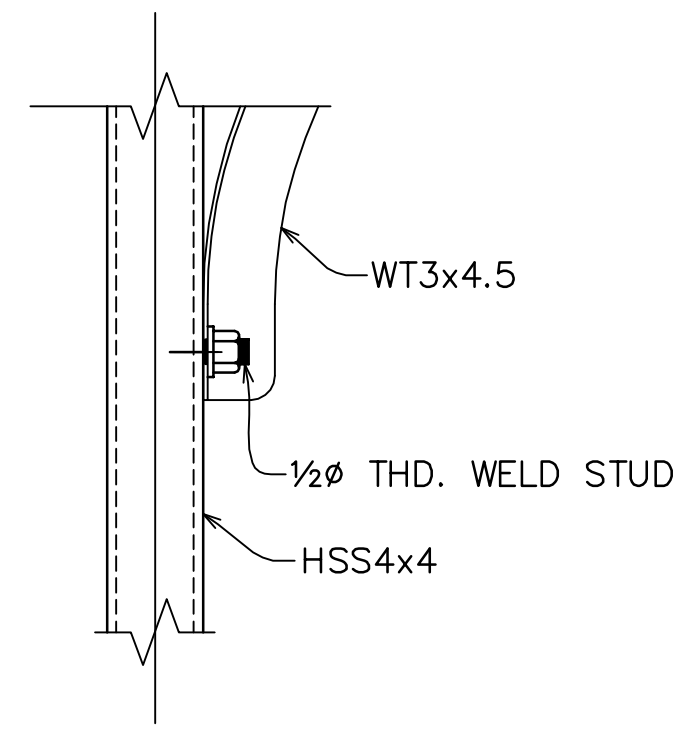
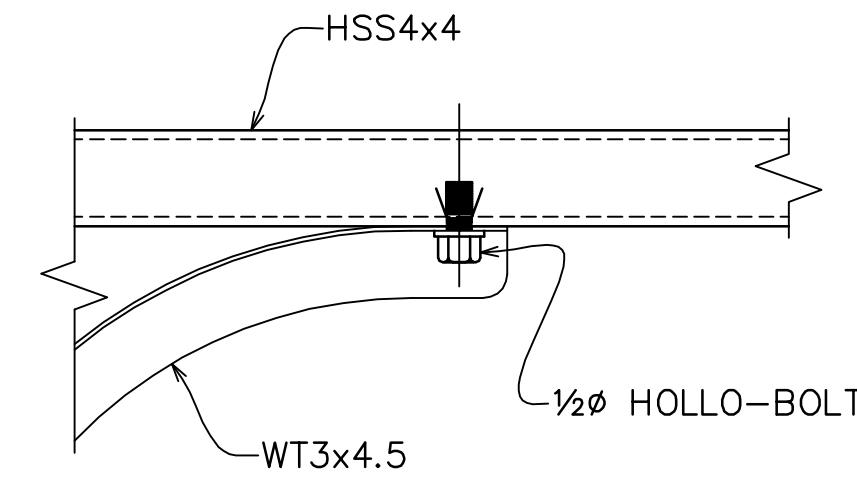


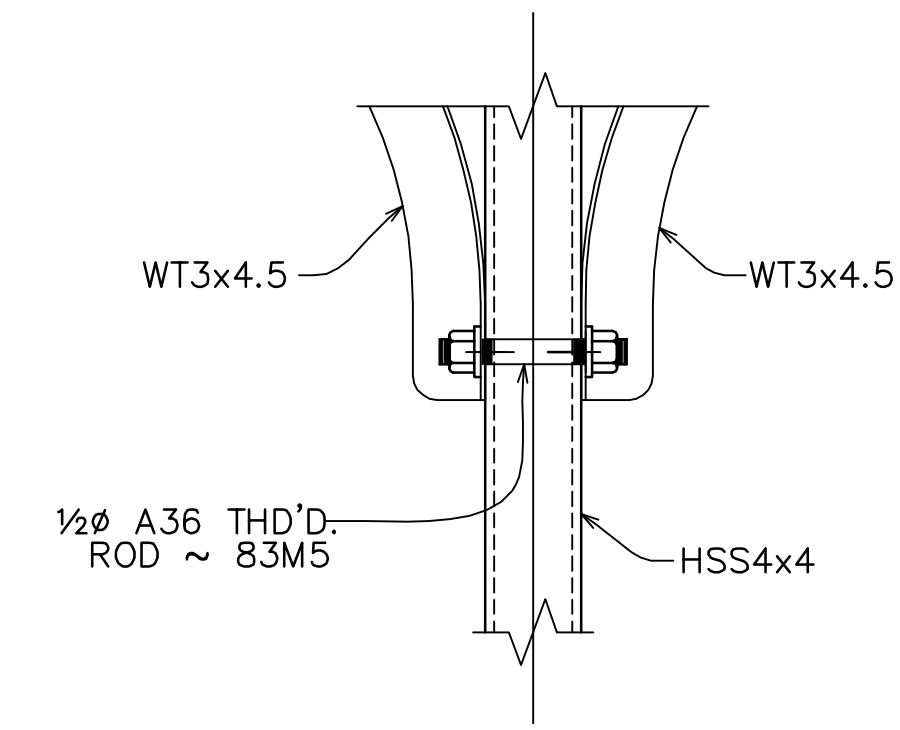
EAVE FRAMING PLAN (BICYCLE CANOPY)



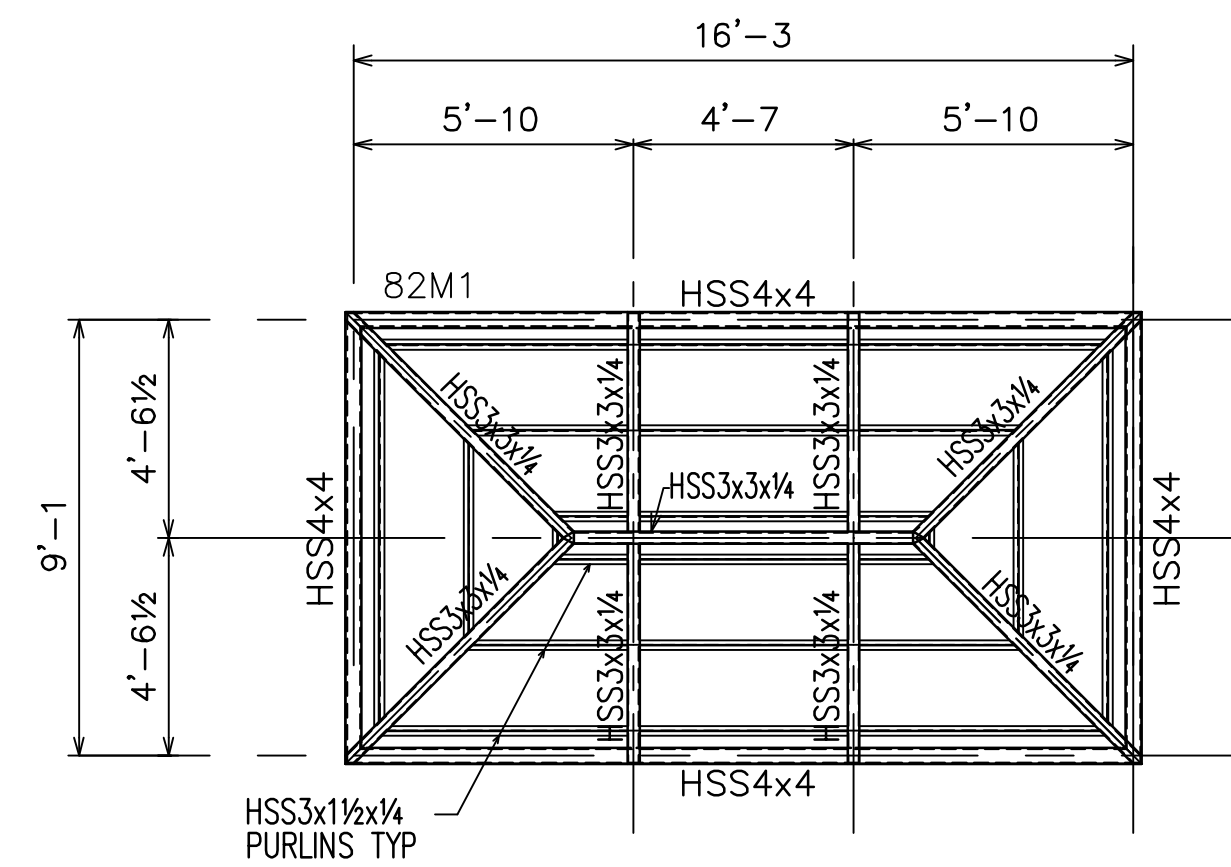
DETAIL 1
TYP. E-W



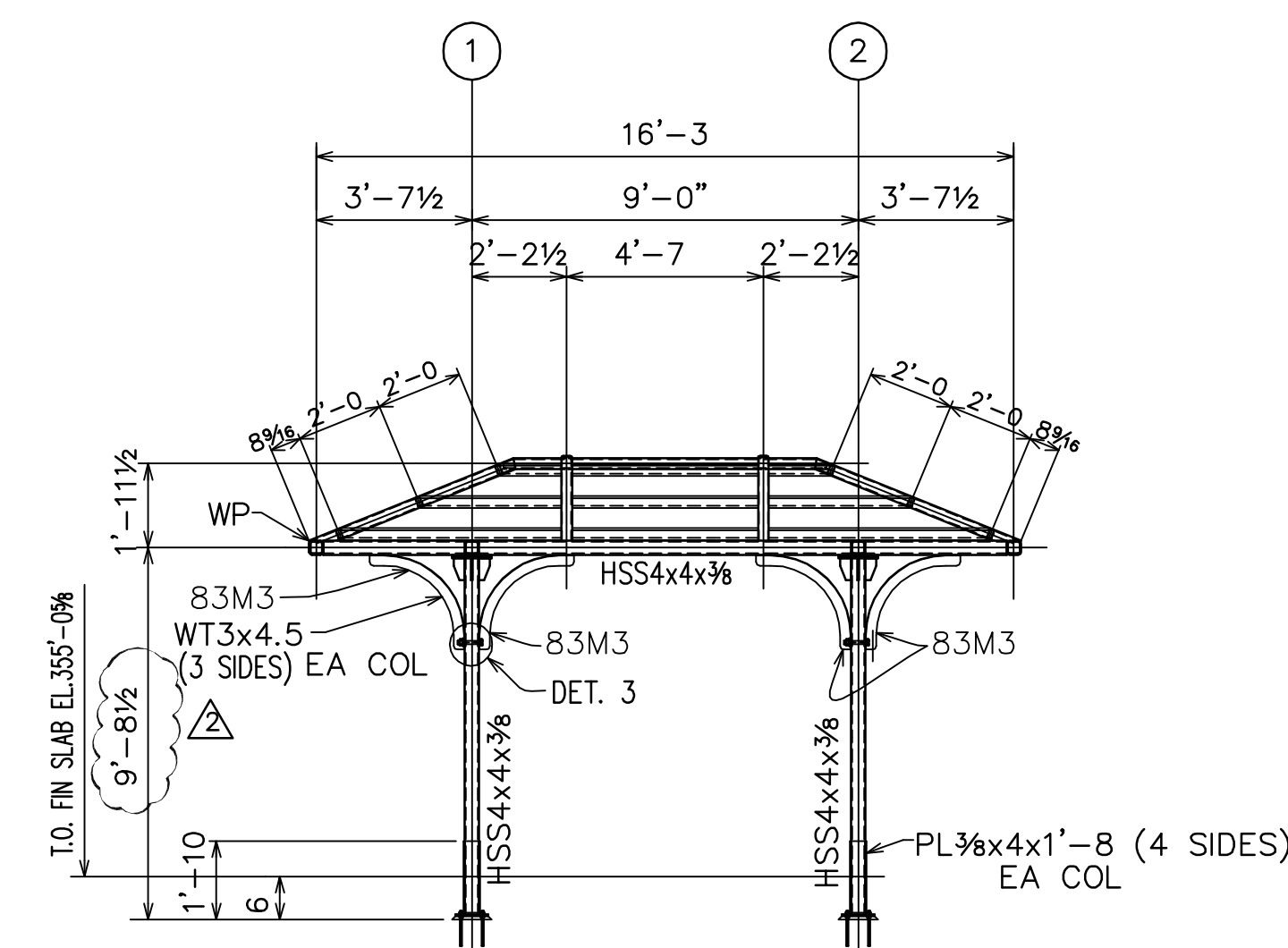
DETAIL 2
TYP. AT TOP



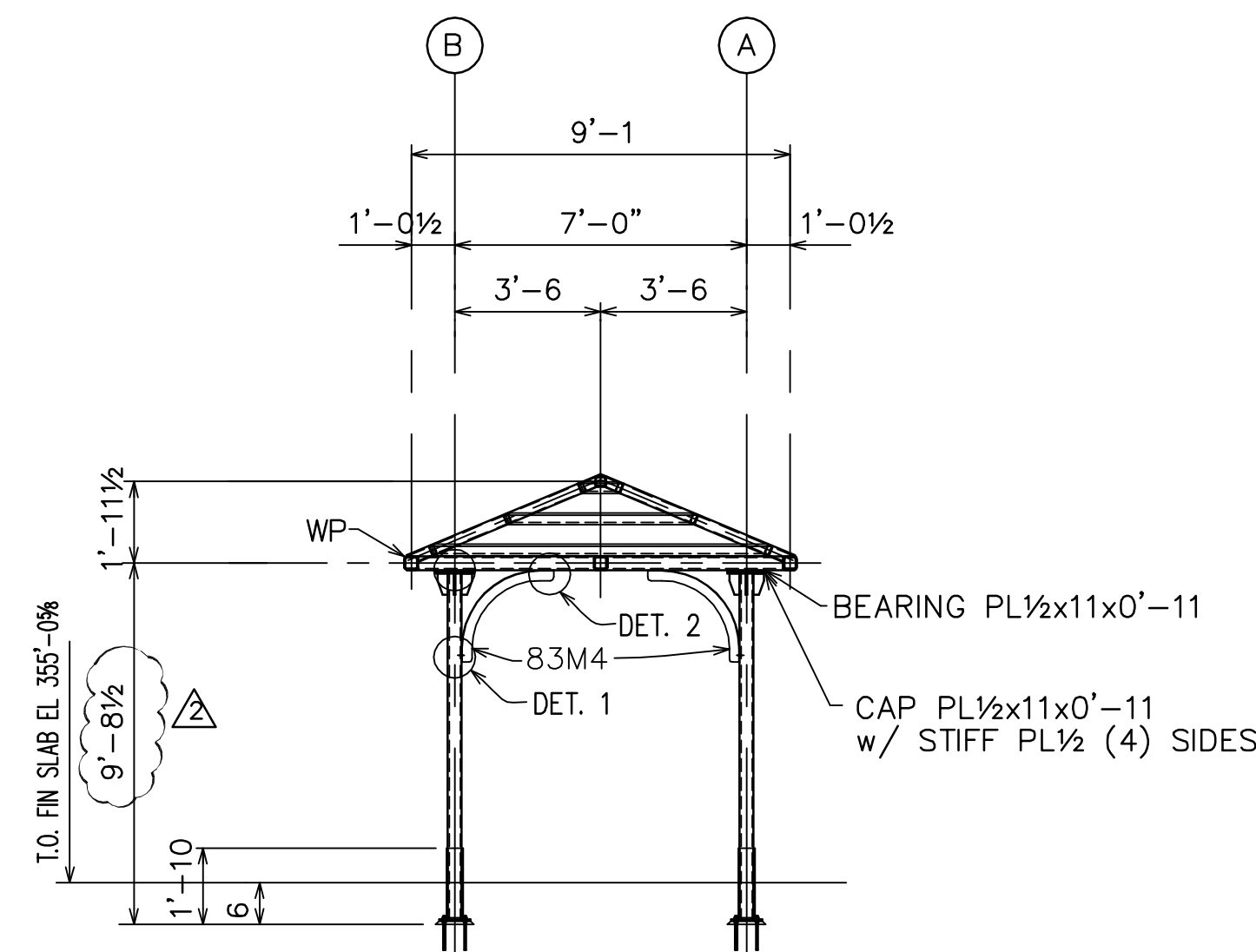
DETAIL 3
TYP. N-S



ROOF FRAMING PLAN (BICYCLE CANOPY)



ELEVATION LOOKING WEST (BICYCLE CANOPY)



ELEVATION LOOKING SOUTH (BICYCLE CANOPY)

REVISIONS		
REV. NO.	DATE	DESCRIPTION
1	4/22/16	PER APPROVAL AND ADDED PIECE MARKS
2	7/20/16	PER RFI 0124

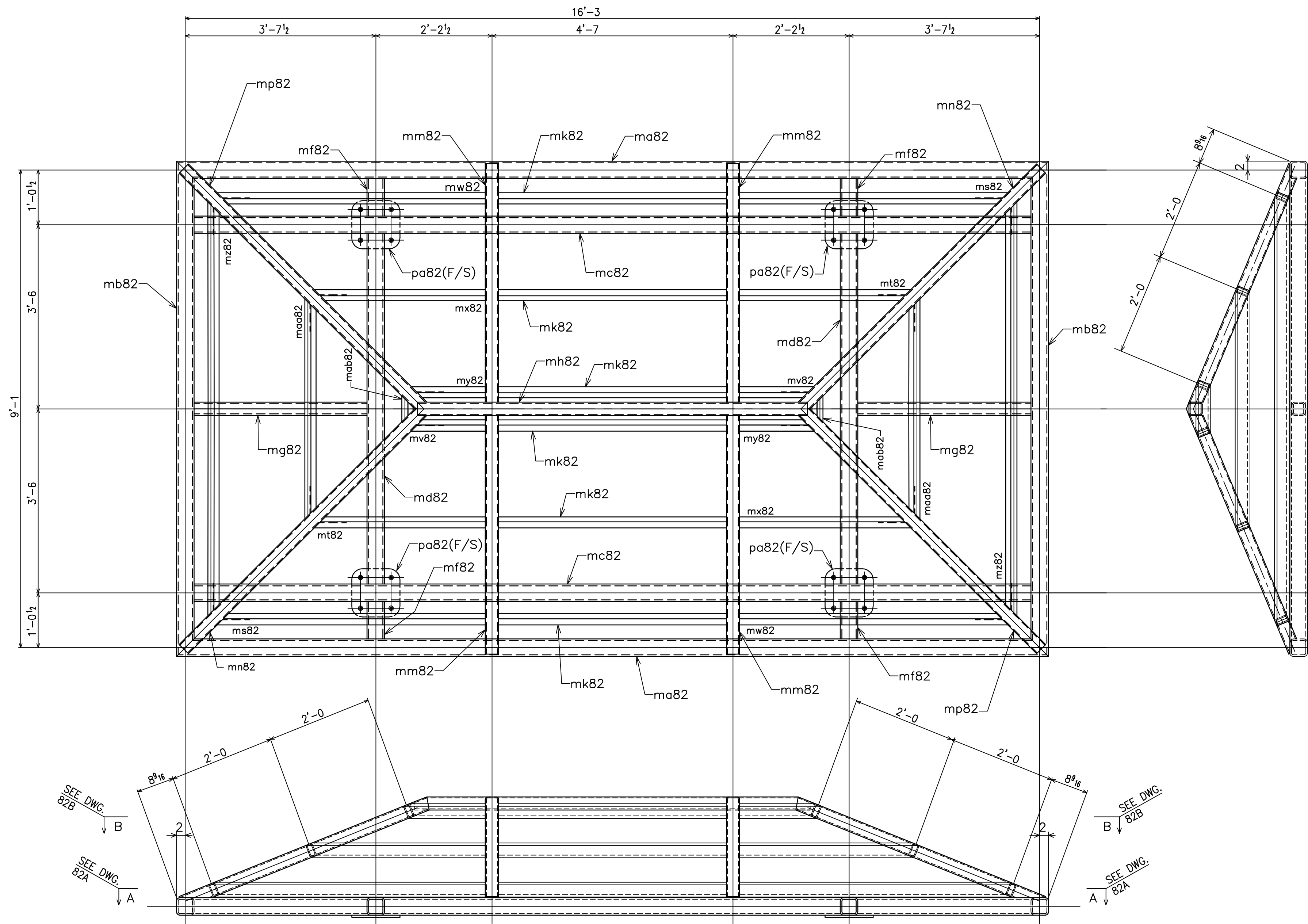
SCHLOSSER STEEL, Inc.
Structural Steel Fabricators
2641 Township Line Rd. Hatfield, Pa.

BICYCLE CANOPY FRAMING PLAN
PARKING IMPROVEMENTS, LANSDALE STATION
LANSDALE/DOYLESTOWN LINE, LANSDALE, PA.

PREP: SEE DETAILS	WELD ELECT: E70xx (LH)	ORDER NO. C5906
PAINT: SEE DETAILS	HOLES: 1/16" (UNO)	SHEET NO. E9
MAT'L: A572-50 (UNO)	MADE BY: DAN CHK'D. BY: RJS	DATE: 11/4/15

PRINT RECORD			
NO.	DT.	TO	FOR





ONE-FRAME-82M1

BILL OF MATERIAL

SHIPMENT						NO.	SHAPE	LENGTH		MARK	REMARKS	WT.
A	B	C	D	E	F			FT	IN			
						ONE	FRAME			82M1		2968
						4	PL 1/2 x 11	0	11	pa82		
						2	HSS 4x4 x 3/8 (A500-B)	16	7	ma82	BEV.2E.	
						2	HSS 4x4 x 3/8 (A500-B)	9	5	mb82	BEV.2E.	
						2	HSS 4x4 x 3/8 (A500-B)	15	11	mc82	SQ-2-E	
						2	HSS 4x4 x 3/8 (A500-B)	6	8	md82	SQ-2-E	
						4	HSS 4x4 x 3/8 (A500-B)	0	8 1/2	mf82	SQ-2-E	
						2	HSS 3x3 x 3/8 (A500-B)	3	3 1/2	mg82	SQ-2-E	
						1	HSS 3x3 x 1/4 (A500-B)	7	5	mh82	SQ-2-E	
						6	HSS 3x1 1/2 x 1/4 (A500-B)	4	4	mi82	SQ-2-E	
						4	HSS 3x3 x 1/4 (A500-B)	4	11 1/8	mm82	BEV.2E.	
						2	HSS 3x3 x 1/4 (A500-B)	6	8 1/8	mn82	BEV.2E.	
						2	HSS 3x1 1/2 x 1/4 (A500-B)	5	1 3/8	mo82	BEV.1E, SQ-1-E	
						2	HSS 3x1 1/2 x 1/4 (A500-B)	3	3 1/8	mp82	BEV.1E, SQ-1-E	
						2	HSS 3x1 1/2 x 1/4 (A500-B)	1	4 15/16	mq82	BEV.1E, SQ-1-E	
						2	HSS 3x1 1/2 x 1/4 (A500-B)	5	1 3/8	mr82	BEV.1E, SQ-1-E	
						2	HSS 3x1 1/2 x 1/4 (A500-B)	3	3 1/8	ms82	BEV.1E, SQ-1-E	
						2	HSS 3x1 1/2 x 1/4 (A500-B)	1	4 15/16	mt82	BEV.1E, SQ-1-E	
						2	HSS 3x1 1/2 x 1/4 (A500-B)	7	10 3/8	mu82	BEV.2E.	
						2	HSS 3x1 1/2 x 1/4 (A500-B)	4	2 1/8	mv82	BEV.2E.	
						2	HSS 3x1 1/2 x 1/4 (A500-B)	0	5 1/8	mw82	BEV.2E.	

FIELD BOLTS (GALV.) 24- L4HM12 HOLLO-BOLT(S) x 2 3/8

SHOP NOTE:
WORK THIS DRWG w/ DWGS 82A & 82B

SHOP NOTE:
ALL STEEL IS AESS

ALL CONNS ARE SLIP-CRITICAL
ROUGHEN FAYING SURFACES BY
HAND WIRE BRUSHING. FULLY
PRETENSION BOLTS.

SHOP NOTE:
VENT FOR GALVANIZING

ALL WELDS TO BE SEAL WELDS
IN ADDITION TO THE STRENGTH
WELDS SHOWN.

REVISIONS		
REV. NO.	DATE	DESCRIPTION

SCHLOSSER STEEL, Inc.

Structural Steel Fabricators
2641 Township Line Rd. Hatfield, Pa.

STEEL DETAILS
PARKING IMPROVEMENTS, LANSDALE STATION

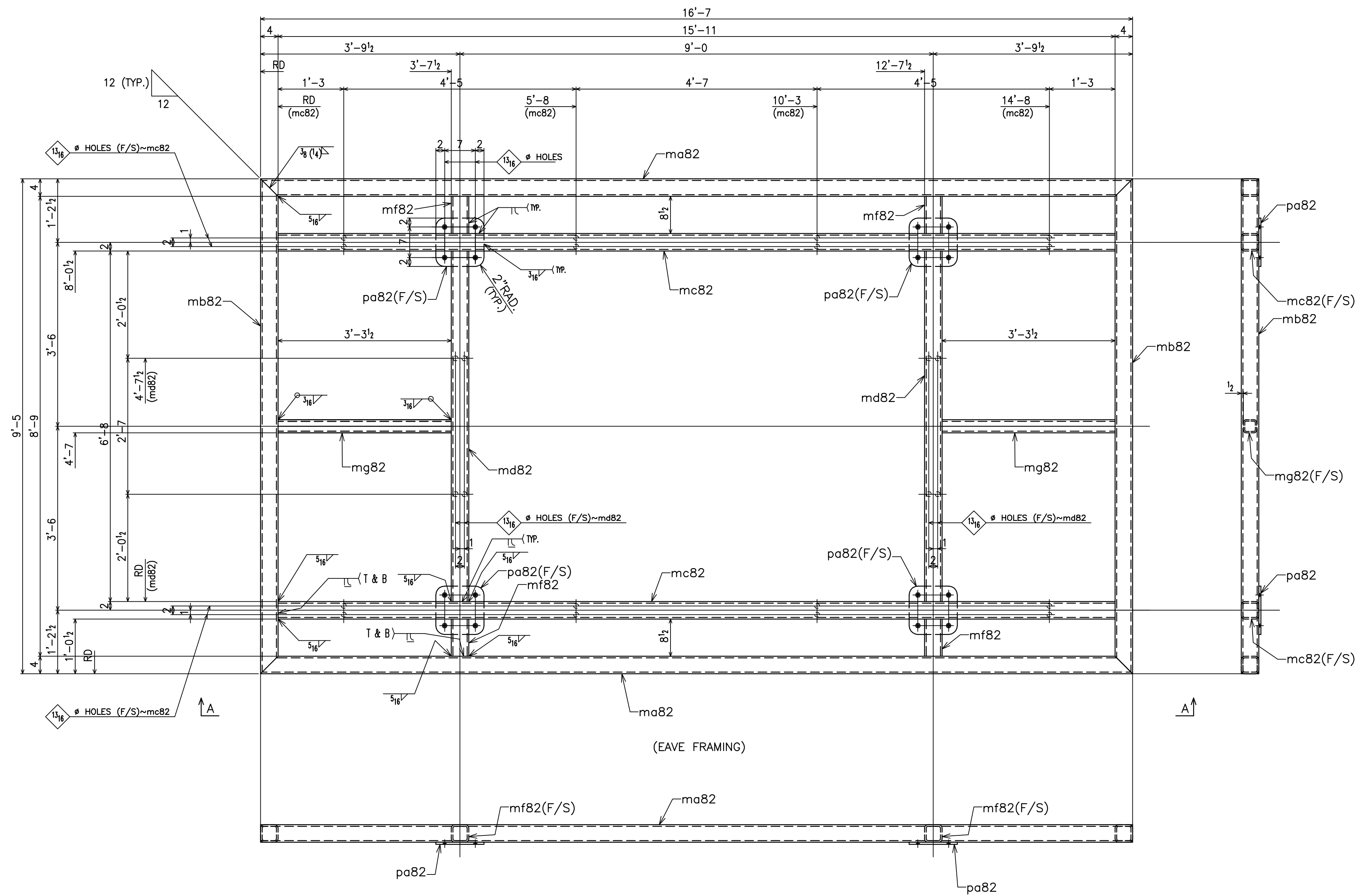
PREP: SSPC-SP3
PAINT: HOT-DIP GALV.
MAT'L: A572-50 (UNO)

WELD
ELECT: E70xx (LH)
HOLES: 1/16 (UNO)
MADE BY: TLN
CHK'D BY: RJS

ORDER NO. C5906
SHEET NO. 82
DATE: 4-13-16

PRINT RECORD			
NO.	DT.	TO	FOR





SECTION "A-A"

SHOP NOTE:
WORK THIS DRWG w/ DWGS 82A & 82B

SHOP NOTE:
ALL STEEL IS AESS

ALL CONNS ARE SLIP-CRITICAL
ROUGHEN FAYING SURFACES BY
HAND WIRE BRUSHING. FULLY
PRETENSION BOLTS.

SHOP NOTE:
VENT FOR GALVANIZING

ALL WELDS TO BE SEAL WELDS
IN ADDITION TO THE STRENGTH
WELDS SHOWN.

PRINT RECORD			
NO.	DT.	TO	FOR

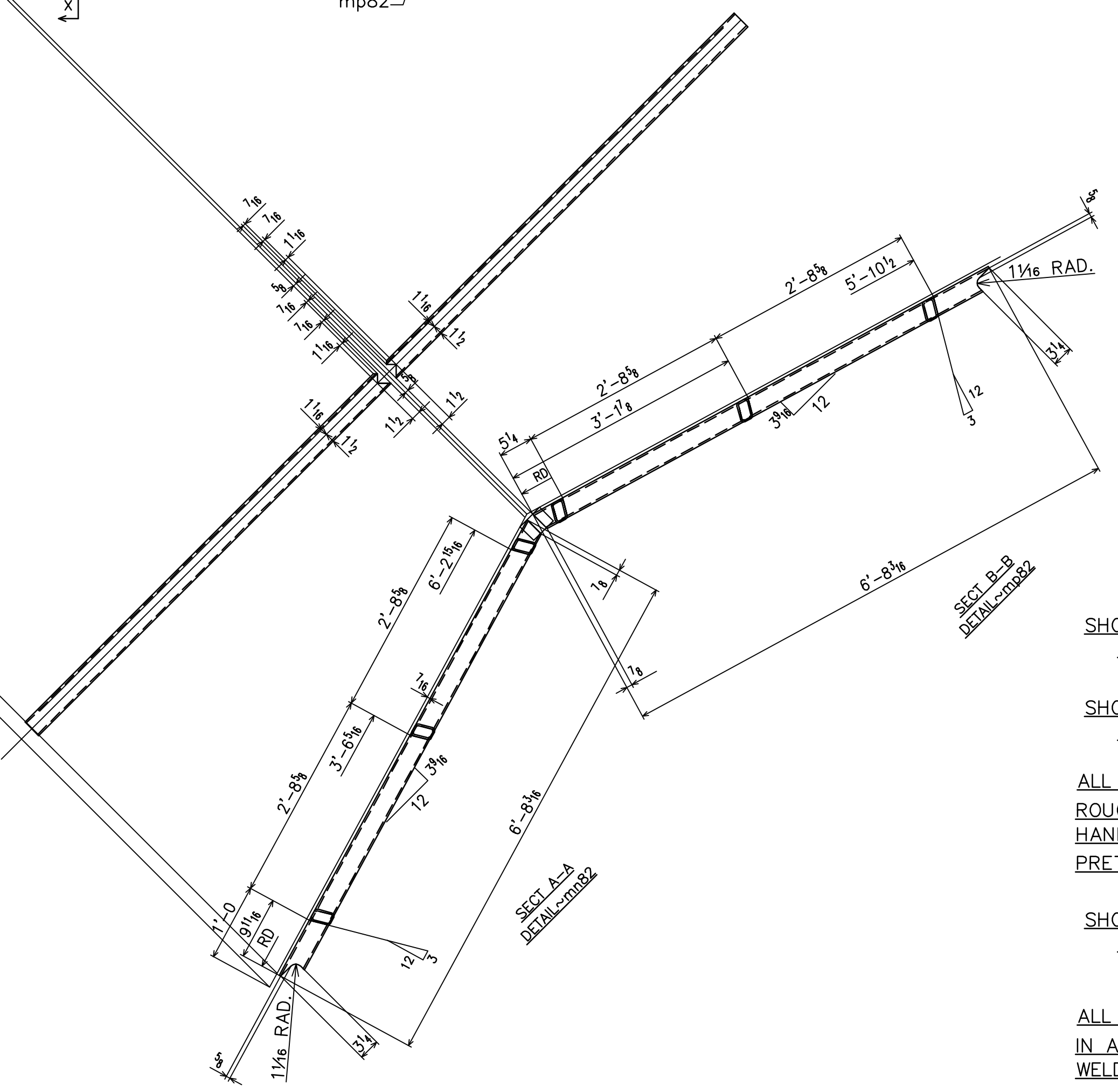
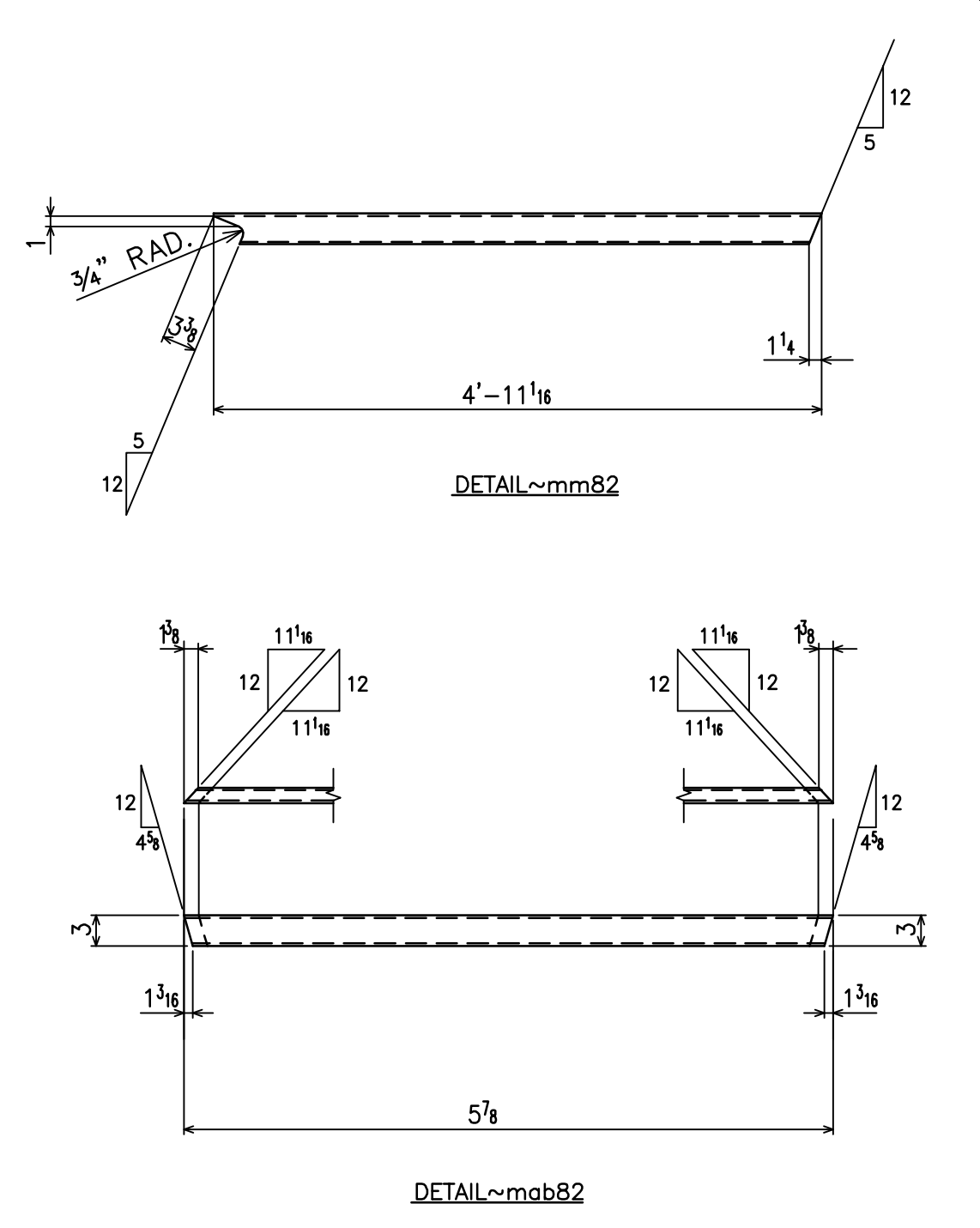
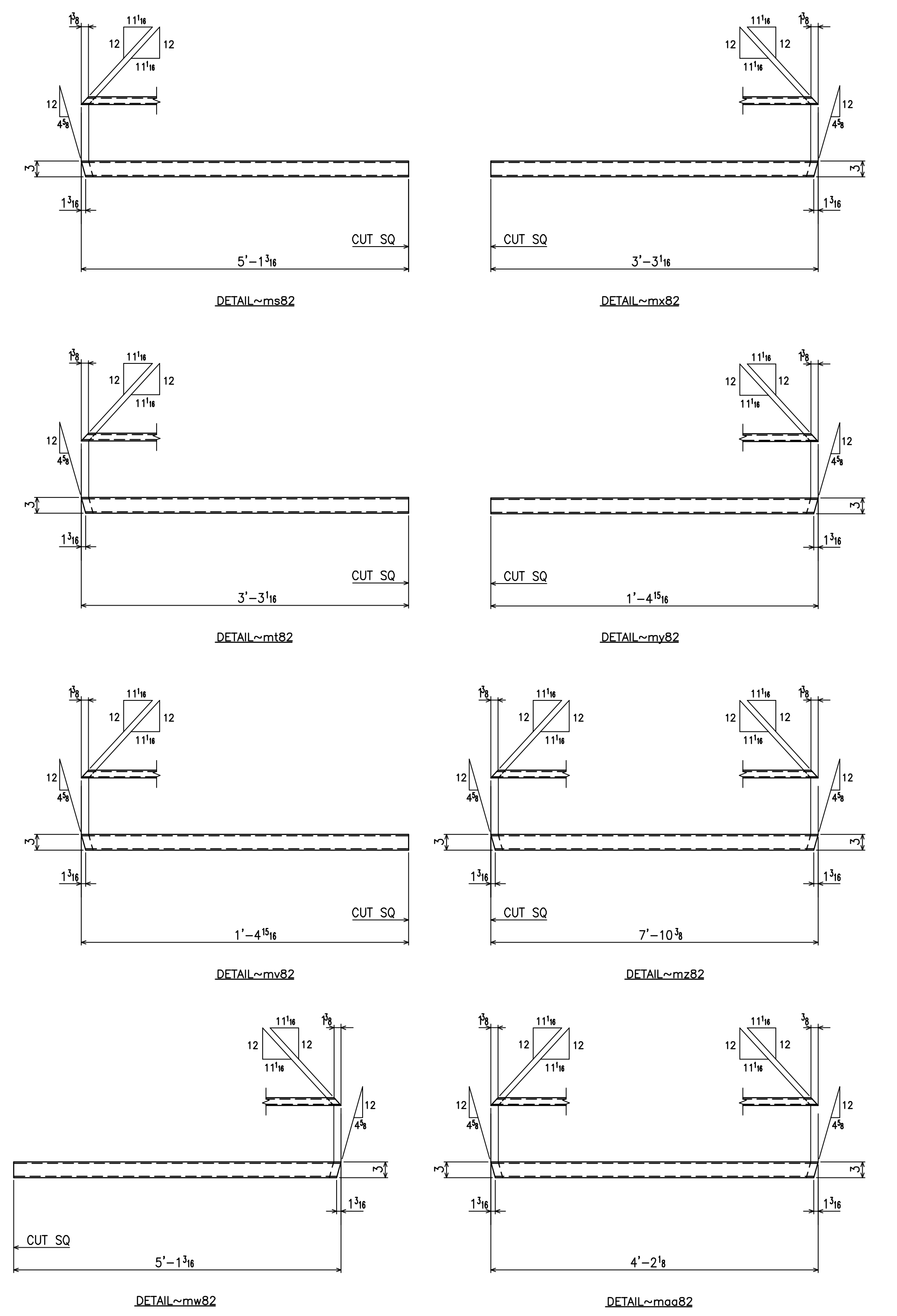
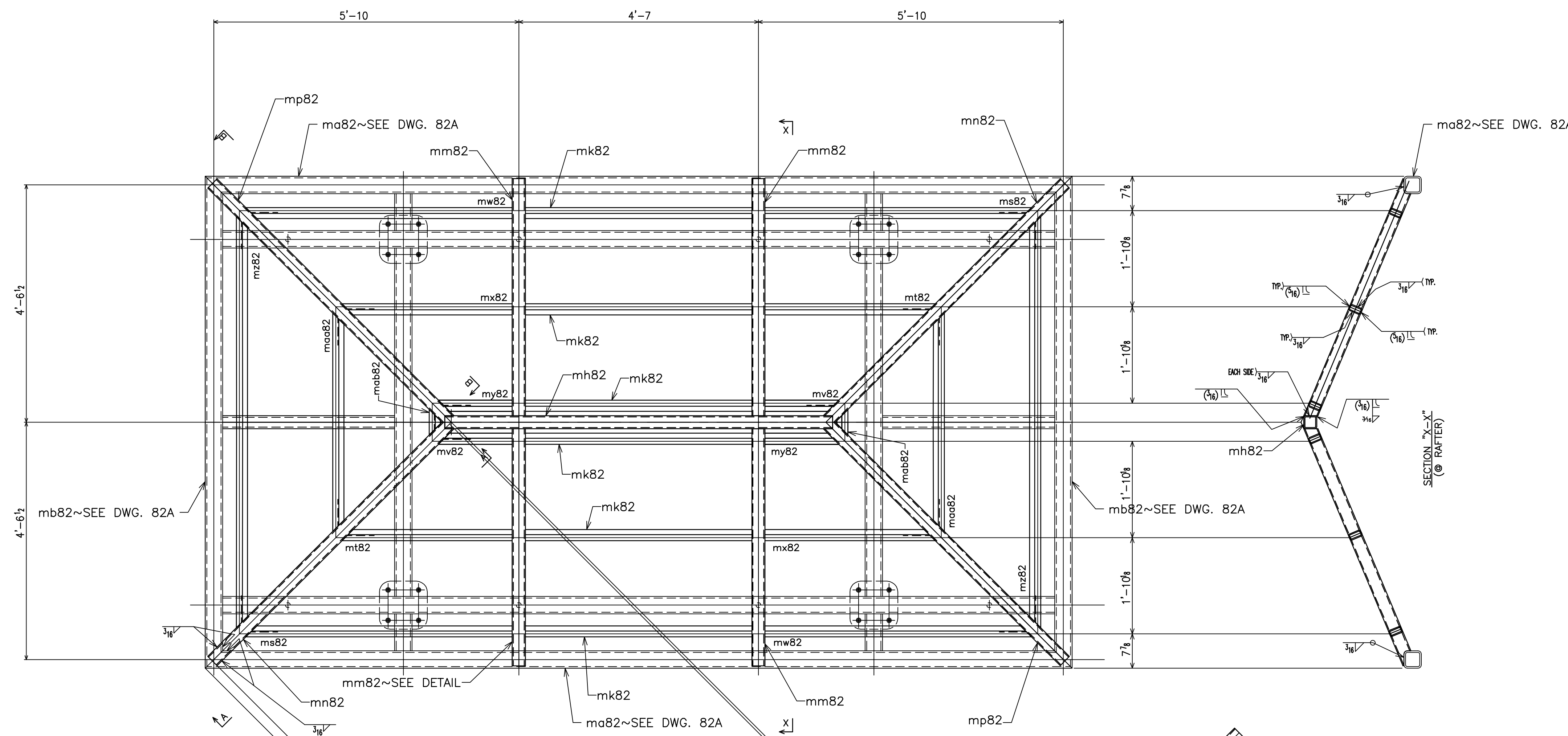
REVISIONS		
REV. NO.	DATE	DESCRIPTION

SCHLOSSER STEEL, Inc.
Structural Steel Fabricators
2641 Township Line Rd. Hatfield, Pa.

STEEL DETAILS
PARKING IMPROVEMENTS, LANSDALE STATION
LANSDALE/DOYLESTOWN LINE, LANSDALE, PA

PREP: SSPC-SP3	WELD ELECT: E70xx (LH)	ORDER NO. C5906
PAINT: HOT-DIP GALV.	HOLES: 1/16 (UNO)	SHEET NO. 82A
MAT'L: A572-50 (UNO)	MADE BY: TLN CHK'D BY: .	DATE: 4-13-16





SHOP NOTE:
WORK THIS DRWG w/ DWGS 82A & 82B

SHOP NOTE:
ALL STEEL IS AESS

ALL CONNS ARE SLIP-CRITICAL
ROUGHEN FAYING SURFACES BY
HAND WIRE BRUSHING. FULLY
PRETENSION BOLTS.

SHOP NOTE:
VENT FOR GALVANIZING

ALL WELDS TO BE SEAL WELDS
IN ADDITION TO THE STRENGTH
WELDS SHOWN.

PRINT RECORD			
NO.	DT.	TO	FOR

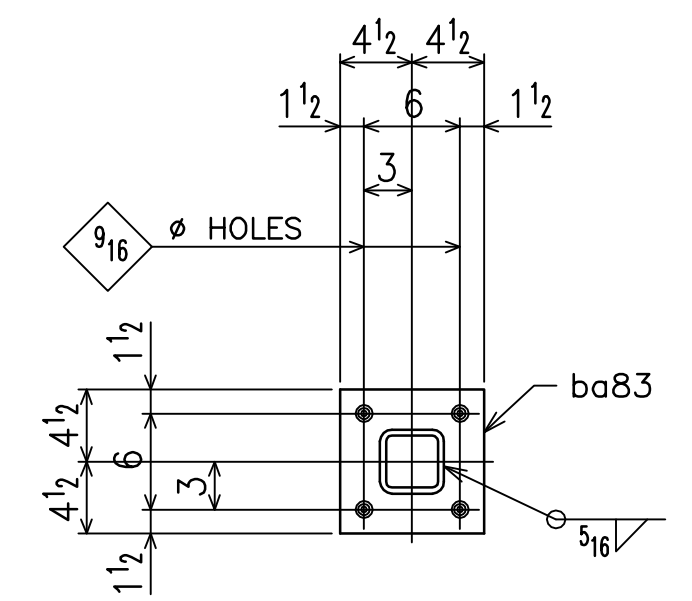
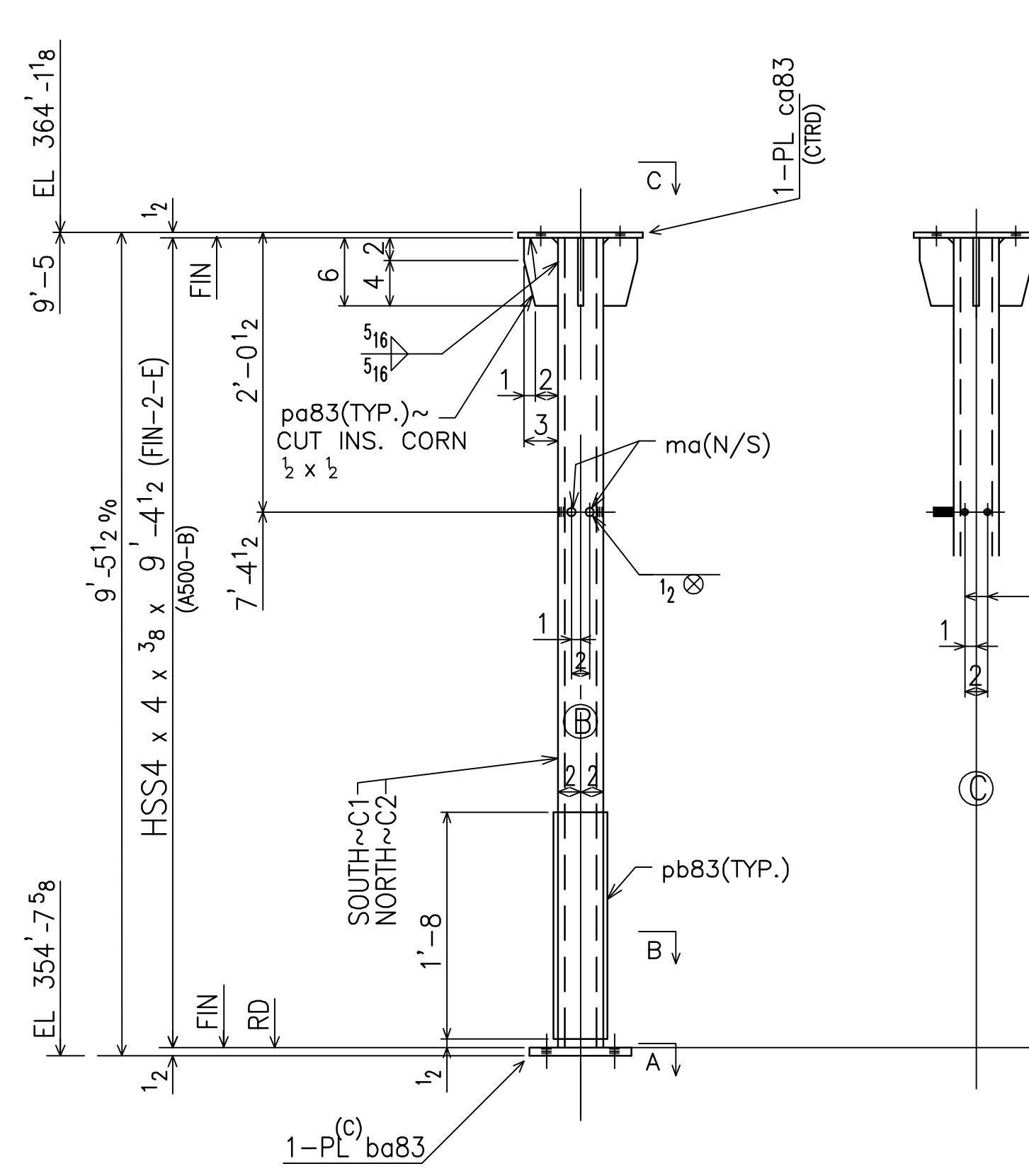
REVISIONS		
REV. NO.	DATE	DESCRIPTION

SCHLOSSER STEEL, Inc.
Structural Steel Fabricators
2641 Township Line Rd. Hatfield, Pa.

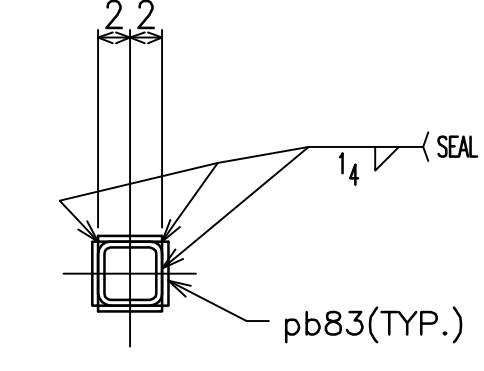
STEEL DETAILS
PARKING IMPROVEMENTS, LANSDALE STATION
LANSDALE/DOYLESTOWN LINE, LANSDALE, PA

PREP: SSPC-SP3 PAINT: HOT-DIP GALV.	WELD ELECT: E70xx (LH) HOLES: 1/8" (UNO) MADE BY: TLN CHK'D BY: RJS	ORDER NO. C5906 SHEET NO. 82B DATE: 4-13-16
--	---	---

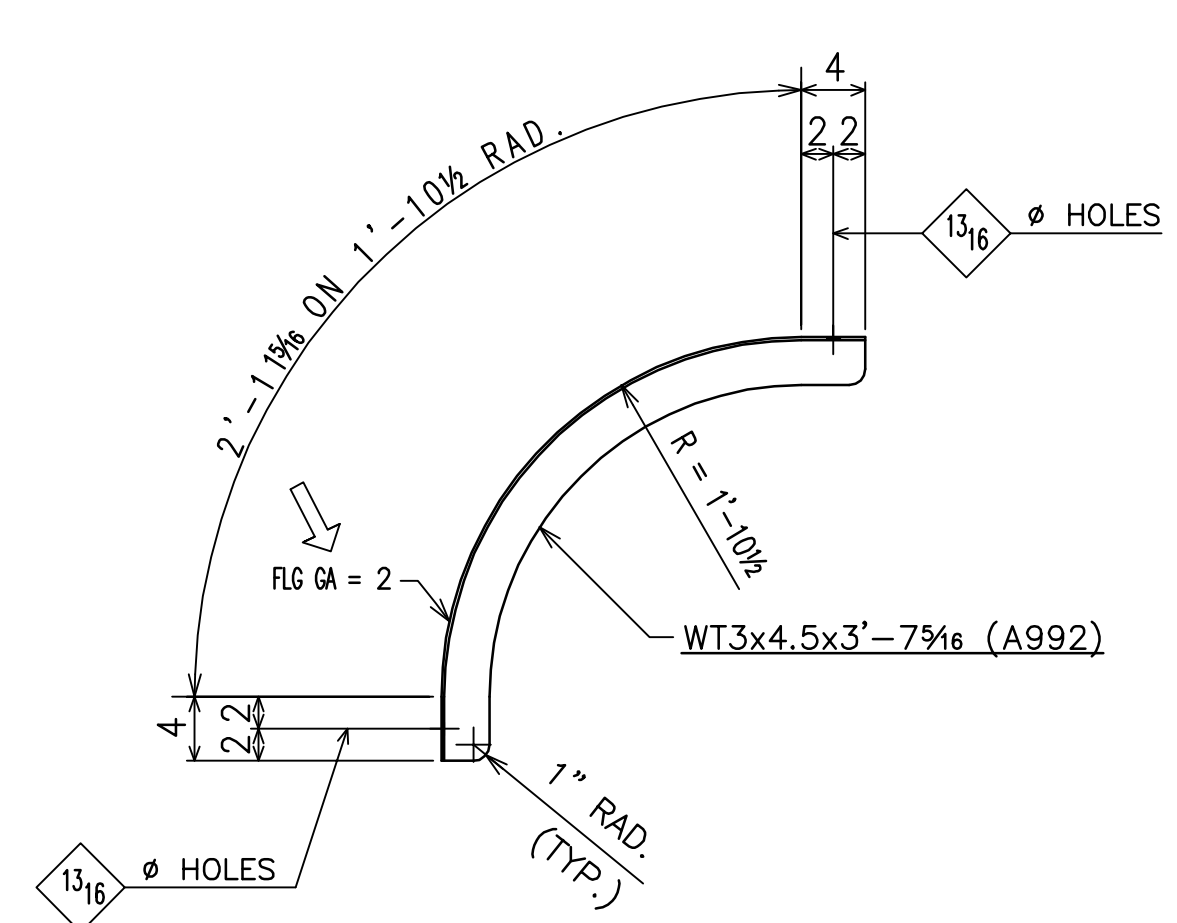




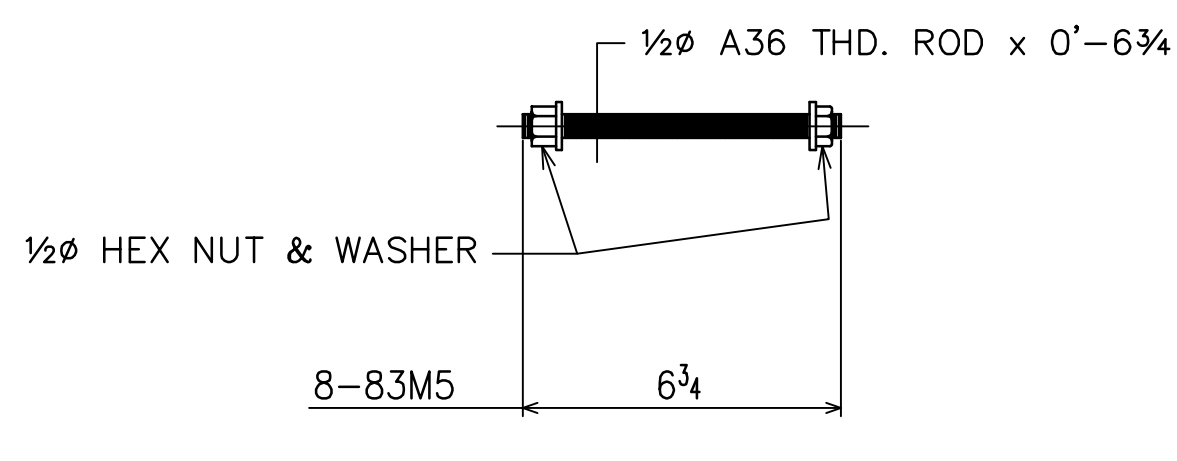
SECTION "A"



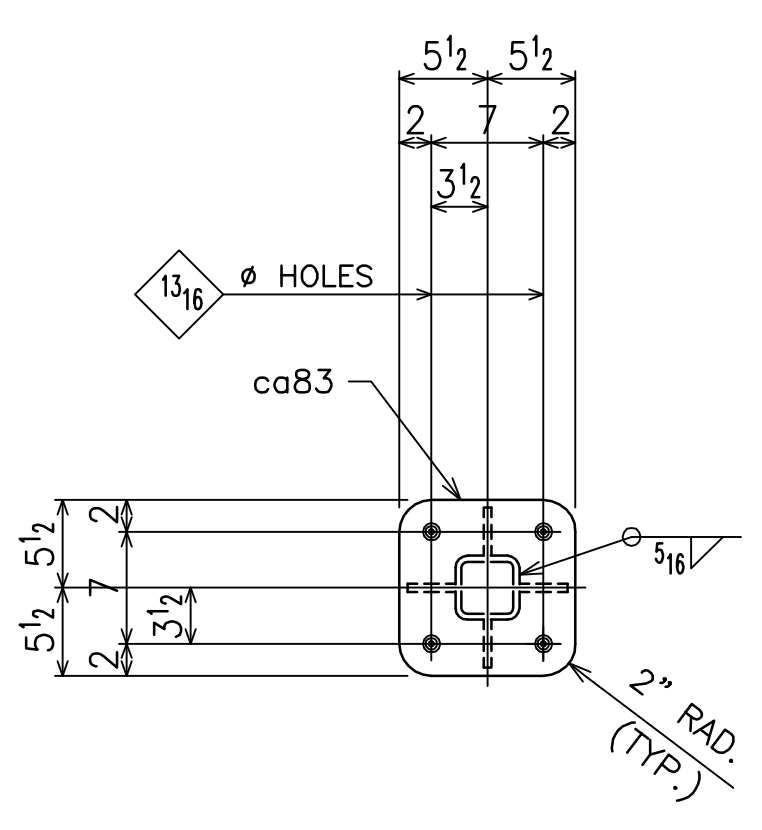
SECTION "B"



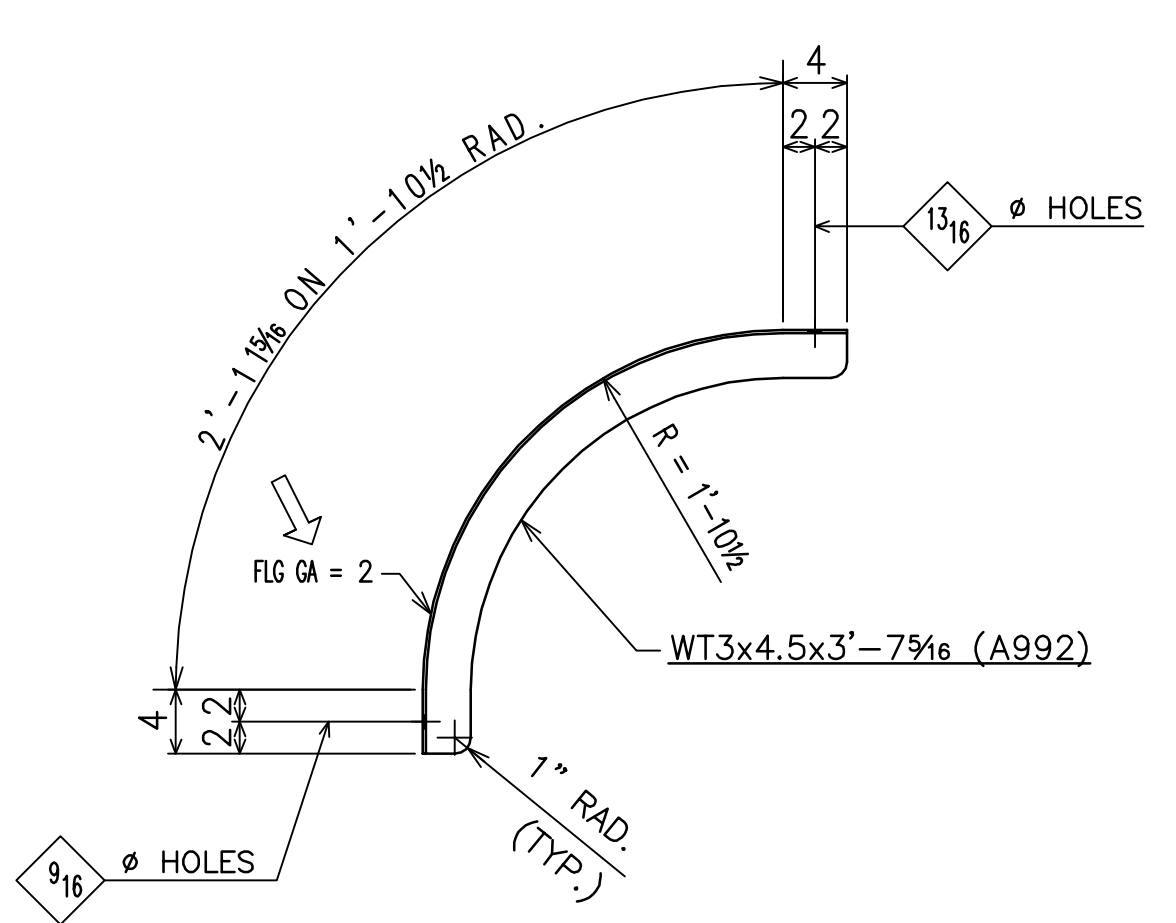
4-BRACKETS-83M4



8-83M5



SECTION "C"



8-BRACKETS-83M3

BILL OF MATERIAL

SHIPMENT						NO.	SHAPE	LENGTH		MARK	REMARKS	WT.
A	B	C	D	E	F			FT	IN			
						2	HSS4x4x3/8 (A500-B)	9	4 1/2	83C1	FIN-2-E	472
						2	HSS4x4x3/8 (A500-B)	9	4 1/2	83C2	FIN-2-E	472
						4	PL 2x9	0	9	ba83		
						16	PL 2x3	0	6	pa83		
						16	PL 3/8x4	1	8	pb83		
						4	PL 2x11	0	11	ca83		
						8	1/2\"/>					

FIELD BOLTS (GALV.)	12	3/4\"/>
	8	1/2\"/>

SHOP NOTE:
ALL STEEL IS AESS

ALL CONNS ARE SLIP-CRITICAL
ROUGHEN FAYING SURFACES BY
HAND WIRE BRUSHING. FULLY
PRETENSION BOLTS.

REVISIONS		
REV. NO.	DATE	DESCRIPTION

SCHLOSSER STEEL, Inc.

Structural Steel Fabricators
2641 Township Line Rd. Hatfield, Pa.

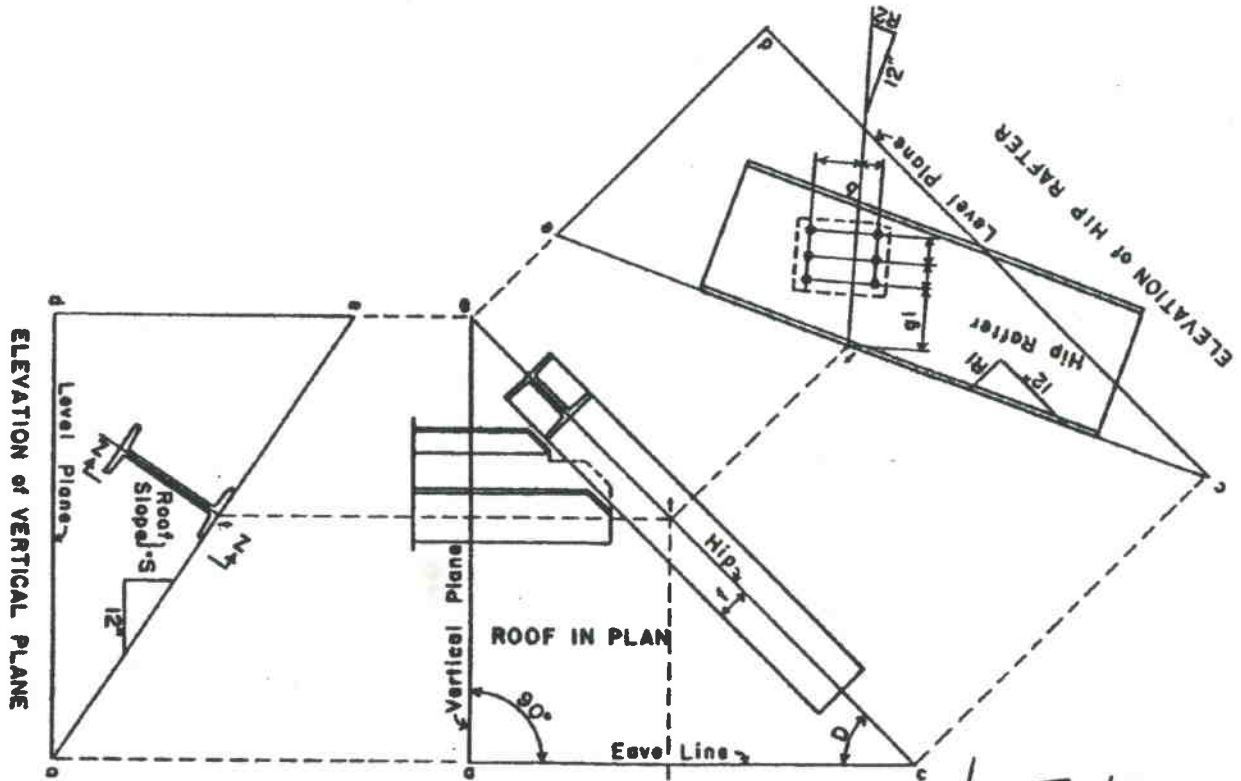
STEEL DETAILS		
PARKING IMPROVEMENTS, LANSDALE STATION LANSDALE/DOYLESTOWN LINE, LANSDALE, PA		
PREP: SSPC-SP3	WELD ELEC: E70xx (LH)	ORDER NO. C5906
PAINT: HOT-DIP GALV.	HILES: 1 1/16 (UNO)	SHEET NO. 83
MAT'L: A572-50 (UNO)	MADE BY: TLN CHK'D BY: RJS	DATE: 4-18-16

PRINT RECORD			
NO.	DT.	TO	FOR



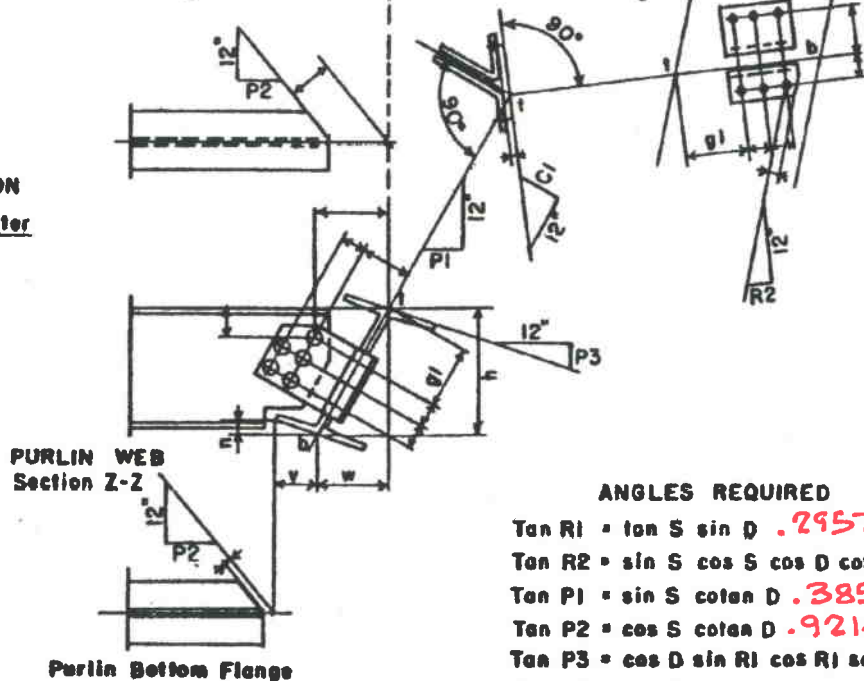
MARTINDALE'S
HIP CONNECTION SKETCH #7

**PURLIN WEB TO HIP RAFTER WEB
 HOLES SQUARE WITH CONNECTION - SKEW IN BEAMS**



SMALL TRIANGULATION

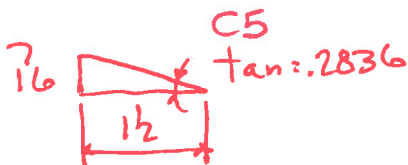
$tb = \frac{\text{Depth of Hip Rafter}}{\cos R2}$
 $w = tb \times \sin P1$
 $h = tb \times \cos P1$
 $v = \frac{f}{\sin D}$
 $a = v \times \tan P3$



ANGLES REQUIRED

$\tan R1 = \tan S \sin D$ **.2957**
 $\tan R2 = \sin S \cos S \cos D \cotan D$
 $\tan P1 = \sin S \cotan D$ **.3858**
 $\tan P2 = \cos S \cotan D$ **.9214**
 $\tan P3 = \cos D \sin R1 \cos R1 \sec S$
 $\tan C1 = \sin P1 \cotan S$

$\tan C5 = \sin R1 \cot D = .2836$



Drop of Hip

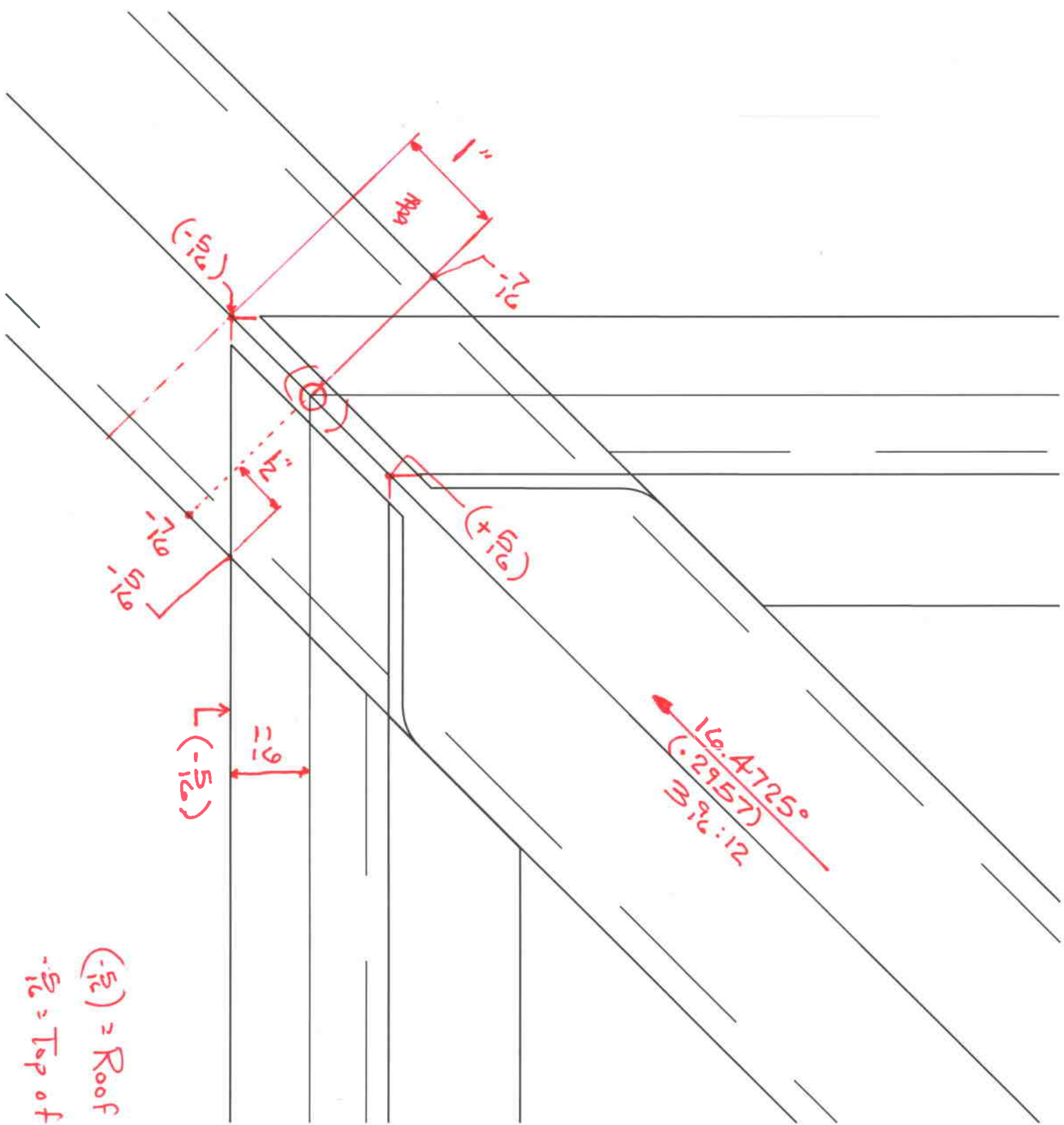
HIP & VALLEY FRAMING ANGLES

FOR ROOF SLOPE PITCH

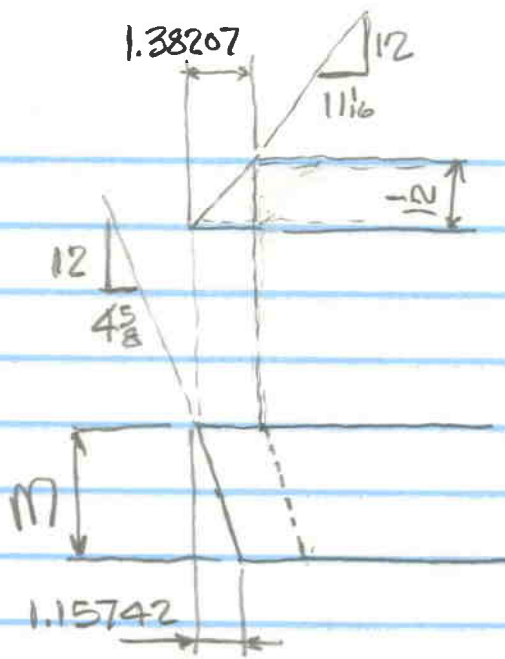
12" HORIZONTAL TO VERTICAL 5"

ANGLE D IN PLAN	R1	R2	R3	P1	P2-C3	P3	C1	C2	C4-C5	C6
70°	4 ¹¹ / ₁₆	1 ⁷ / ₃₂	4	1 ¹¹ / ₁₆	4 ⁷ / ₃₂	1 ¹ / ₂	4	1 ¹ / ₂	1 ¹³ / ₃₂	82°26'
69°	4 ²¹ / ₃₂	1 ¹³ / ₃₂	4 ⁷ / ₃₂	1 ²⁵ / ₃₂	4 ¹ / ₄	1 ¹ / ₁₆	4 ⁷ / ₃₂	1 ¹ / ₁₆	1 ²¹ / ₃₂	82°04'
68°	4 ⁵ / ₈	2 ¹ / ₃₂	4 ⁷ / ₁₆	1 ⁷ / ₈	4 ¹³ / ₃₂	1 ¹ / ₈	4 ⁷ / ₁₆	1 ¹ / ₈	1 ³ / ₄	81°42'
67°	4 ¹³ / ₃₂	2 ¹³ / ₃₂	4 ²¹ / ₃₂	1 ¹³ / ₃₂	4 ¹¹ / ₁₆	1 ¹¹ / ₁₆	4 ²¹ / ₃₂	2 ¹ / ₃₂	1 ¹³ / ₁₆	81°21'
66°	4 ⁹ / ₁₆	2 ⁵ / ₃₂	4 ⁷ / ₈	2 ¹ / ₁₆	4 ¹⁵ / ₁₆	1 ³ / ₄	4 ⁷ / ₈	2 ¹ / ₃₂	1 ²⁵ / ₃₂	81°00'
65°	4 ¹³ / ₃₂	2 ⁷ / ₃₂	5 ³ / ₃₂	2 ⁵ / ₃₂	5 ⁵ / ₃₂	1 ¹³ / ₁₆	5 ³ / ₃₂	2 ⁵ / ₃₂	1 ³ / ₃₂	80°39'
64°	4 ¹ / ₂	2 ⁹ / ₃₂	5 ⁵ / ₁₆	2 ¹ / ₄	5 ¹³ / ₃₂	1 ⁷ / ₈	5 ⁵ / ₁₆	2 ¹ / ₃₂	2 ¹ / ₁₆	80°18'
63°	4 ¹⁵ / ₃₂	1	5 ⁹ / ₁₆	2 ¹¹ / ₃₂	5 ²¹ / ₃₂	1 ¹⁵ / ₁₆	5 ¹¹ / ₃₂	2 ⁵ / ₃₂	2 ¹ / ₈	79°57'
62°	4 ⁷ / ₁₆	1 ¹ / ₁₆	5 ¹³ / ₁₆	2 ¹ / ₁₆	5 ⁷ / ₈	1 ³ / ₃₂	5 ²⁷ / ₃₂	3 ¹ / ₃₂	2 ¹ / ₁₆	79°36'
61°	4 ³ / ₈	1 ¹ / ₈	6 ¹ / ₃₂	2 ¹ / ₁₆	6 ¹ / ₈	2 ¹ / ₃₂	6	1 ¹ / ₃₂	2 ⁵ / ₃₂	79°15'
60°	4 ¹¹ / ₃₂	1 ⁷ / ₃₂	6 ⁵ / ₃₂	2 ² / ₃₂	6 ¹³ / ₃₂	2 ¹ / ₁₆	6 ¹ / ₄	1 ³ / ₃₂	2 ¹ / ₃₂	78°55'
59°	4 ⁹ / ₃₂	1 ⁵ / ₁₆	6 ¹ / ₃₂	2 ² / ₃₂	6 ²¹ / ₃₂	2 ¹ / ₈	6 ¹ / ₂	1 ³ / ₃₂	2 ¹ / ₃₂	78°35'
58°	4 ¹ / ₄	1 ¹ / ₃₂	6 ² / ₃₂	2 ⁷ / ₈	6 ¹⁷ / ₁₆	2 ⁵ / ₃₂	6 ² / ₃₂	1 ⁷ / ₃₂	2 ¹ / ₂	78°15'
57°	4 ³ / ₁₆	1 ¹ / ₂	7 ¹ / ₃₂	3	7 ¹ / ₁₆	2 ¹ / ₃₂	6 ³ / ₃₂	1 ³ / ₃₂	2 ¹ / ₁₆	77°55'
56°	4 ⁵ / ₃₂	1 ³ / ₈	7 ¹ / ₁₆	3 ¹ / ₃₂	7 ⁵ / ₃₂	2 ¹ / ₄	7 ¹ / ₄	1 ¹ / ₈	2 ⁵ / ₈	77°35'
55°	4 ³ / ₃₂	1 ² / ₃₂	7 ¹ / ₁₆	3 ¹ / ₃₂	7 ³ / ₄	2 ⁹ / ₃₂	7 ¹ / ₂	1 ¹ / ₁₆	2 ² / ₃₂	77°15'
54°	4 ¹ / ₃₂	1 ² / ₃₂	7 ² / ₃₂	3 ¹ / ₃₂	8 ¹ / ₁₆	2 ⁵ / ₁₆	7 ³ / ₄	1 ¹ / ₃₂	2 ² / ₃₂	76°56'
53°	4	1 ¹ / ₁₆	8 ¹ / ₈	3 ¹ / ₁₆	8 ¹ / ₃₂	2 ¹ / ₃₂	8	1 ¹ / ₃₂	2 ² / ₃₂	76°37'
52°	3 ¹⁵ / ₁₆	2 ¹ / ₁₆	8 ¹ / ₃₂	3 ¹ / ₃₂	8 ² / ₃₂	2 ³ / ₈	8 ³ / ₃₂	1 ¹ / ₁₆	2 ¹ / ₁₆	76°18'
51°	3 ² / ₃₂	2 ¹ / ₁₆	8 ² / ₃₂	3 ² / ₃₂	8 ³ / ₃₂	2 ³ / ₈	8 ³ / ₁₆	1 ¹ / ₄	3	75°59'
50°	3 ² / ₃₂	2 ¹ / ₁₆	9	3 ³ / ₈	9 ³ / ₃₂	2 ¹ / ₃₂	8 ² / ₃₂	1 ² / ₃₂	3 ¹ / ₁₆	75°41'
49°	3 ² / ₃₂	2 ¹ / ₁₆	9 ⁵ / ₁₆	4	9 ⁵ / ₈	2 ¹ / ₁₆	9 ¹ / ₈	1 ² / ₃₂	3 ³ / ₈	75°23'
48°	3 ² / ₃₂	2 ¹ / ₁₆	9 ⁵ / ₈	4 ⁵ / ₃₂	9 ³ / ₃₂	2 ¹ / ₁₆	9 ⁷ / ₁₆	2	3 ¹ / ₁₆	75°05'
47°	3 ² / ₃₂	2 ² / ₃₂	9 ³ / ₃₂	4 ⁵ / ₁₆	10 ⁵ / ₁₆	2 ¹ / ₃₂	9 ² / ₃₂	2 ³ / ₃₂	3 ¹ / ₄	74°47'
46°	3 ¹ / ₃₂	2 ¹ / ₈	10 ¹ / ₁₆	4 ¹ / ₃₂	10 ¹ / ₁₆	2 ¹ / ₃₂	10 ¹ / ₃₂	2 ¹ / ₁₆	3 ¹ / ₃₂	74°30'
45°	3 ¹ / ₃₂	3	10 ² / ₃₂	4 ⁵ / ₈	11 ¹ / ₁₆	2 ¹ / ₂	10 ¹ / ₃₂	2 ¹ / ₄	3 ¹ / ₃₂	74°13'
44°	3 ¹ / ₃₂	3 ⁵ / ₃₂	11 ¹ / ₃₂	4 ² / ₃₂	11 ⁷ / ₁₆	2 ¹ / ₂	10 ² / ₃₂	2 ¹ / ₃₂	3 ¹ / ₃₂	73°56'
43°	3 ¹ / ₃₂	3 ⁷ / ₁₆	11 ¹ / ₁₆	4 ³ / ₃₂	11 ³ / ₈	2 ¹ / ₂	10 ³ / ₃₂	2 ¹ / ₁₆	3 ¹ / ₃₂	73°40'
42°	3 ¹ / ₃₂	3 ¹ / ₂	11 ¹ / ₁₆	5 ¹ / ₈	*11 ² / ₃₂	2 ¹ / ₂	11 ⁵ / ₁₆	2 ¹ / ₂	3 ¹ / ₁₆	73°24'
41°	3 ³ / ₃₂	3 ¹ / ₁₆	*11 ¹ / ₁₆	5 ¹ / ₁₆	*11 ⁵ / ₁₆	2 ¹ / ₂	11 ² / ₃₂	2 ¹ / ₃₂	3 ⁵ / ₈	73°08'
40°	3 ⁷ / ₃₂	3 ³ / ₈	*11 ³ / ₃₂	5 ¹ / ₂	*10 ² / ₃₂	2 ¹ / ₂	12	2 ¹ / ₁₆	3 ¹ / ₁₆	72°52'
39°	3 ⁷ / ₃₂	4 ¹ / ₁₆	*11 ¹ / ₃₂	5 ¹ / ₁₆	*10 ⁷ / ₃₂	2 ¹ / ₂	*11 ² / ₃₂	2 ² / ₃₂	3 ¹ / ₄	72°37'
38°	3 ⁷ / ₃₂	4 ³ / ₃₂	*10 ² / ₃₂	5 ² / ₃₂	*10 ⁵ / ₃₂	2 ¹ / ₁₆	*11 ⁵ / ₁₆	2 ² / ₃₂	3 ¹ / ₁₆	72°22'
37°	3 ¹ / ₃₂	4 ¹ / ₂	*10 ⁹ / ₃₂	6 ¹ / ₈	*9 ¹ / ₁₆	2 ¹ / ₃₂	*11	2 ¹ / ₁₆	3 ³ / ₈	72°07'
36°	2 ¹ / ₁₆	4 ³ / ₄	*9 ¹ / ₁₆	6 ¹ / ₃₂	*9 ¹ / ₃₂	2 ¹ / ₁₆	*10 ¹ / ₁₆	3 ¹ / ₃₂	3 ¹ / ₁₆	71°52'
35°	2 ⁷ / ₈	4 ¹ / ₃₂	*9 ¹ / ₃₂	6 ¹ / ₃₂	*9 ³ / ₃₂	2 ¹ / ₃₂	*10 ³ / ₈	3 ¹ / ₈	3 ³ / ₃₂	71°38'
34°	2 ¹ / ₁₆	5 ¹ / ₄	*9 ¹ / ₄	6 ² / ₃₂	*8 ² / ₃₂	2 ³ / ₈	*10 ³ / ₃₂	3 ¹ / ₃₂	4 ¹ / ₃₂	71°25'
33°	2 ² / ₃₂	5 ¹ / ₂	*8 ² / ₃₂	7 ³ / ₃₂	*8 ⁷ / ₁₆	2 ¹ / ₃₂	*9 ¹ / ₁₆	3 ³ / ₃₂	4 ³ / ₃₂	71°12'
32°	2 ² / ₃₂	5 ² / ₃₂	*8 ¹ / ₃₂	7 ³ / ₈	*8 ¹ / ₈	2 ⁵ / ₁₆	*9 ⁷ / ₁₆	3 ³ / ₈	4 ¹ / ₈	70°59'
31°	2 ¹ / ₃₂	6 ¹ / ₁₆	*8 ³ / ₃₂	7 ¹ / ₁₆	*7 ¹ / ₁₆	2 ³ / ₃₂	*9 ³ / ₃₂	3 ¹ / ₃₂	4 ³ / ₁₆	70°46'
30°	2 ¹ / ₂	6 ³ / ₈	*7 ³ / ₃₂	8	*7 ¹ / ₂	2 ¹ / ₄	*9 ¹ / ₃₂	3 ¹ / ₃₂	4 ¹ / ₄	70°33'
29°	2 ¹ / ₁₆	6 ¹ / ₁₆	*7 ² / ₃₂	8 ⁵ / ₁₆	*7 ³ / ₃₂	2 ⁷ / ₃₂	*8 ² / ₃₂	3 ⁵ / ₈	4 ³ / ₃₂	70°21'
28°	2 ¹ / ₃₂	7 ¹ / ₃₂	*7 ³ / ₈	8 ¹ / ₁₆	*6 ² / ₃₂	2 ⁵ / ₃₂	*8 ¹ / ₃₂	3 ¹ / ₁₆	4 ¹ / ₃₂	70°09'
27°	2 ⁷ / ₃₂	7 ¹ / ₃₂	*7 ¹ / ₁₆	9 ¹ / ₁₆	*6 ⁵ / ₈	2 ¹ / ₈	*8 ³ / ₃₂	3 ² / ₃₂	4 ³ / ₈	69°58'
26°	2 ³ / ₁₆	7 ¹ / ₁₆	*6 ³ / ₄	9 ¹ / ₃₂	*6 ⁵ / ₈	2 ¹ / ₁₆	*8 ¹ / ₁₆	3 ² / ₃₂	4 ¹ / ₃₂	69°47'
25°	2 ¹ / ₈	8 ³ / ₃₂	*6 ¹ / ₃₂	9 ² / ₃₂	*6 ¹ / ₁₆	2	*7 ² / ₃₂	3 ¹ / ₁₆	4 ¹ / ₃₂	69°36'
24°	2 ¹ / ₃₂	8 ³ / ₄	*6 ³ / ₁₆	10 ³ / ₈	*5 ¹ / ₁₆	1 ³ / ₃₂	*7 ⁵ / ₈	4	4 ¹ / ₂	69°26'
23°	1 ¹ / ₁₆	9 ¹ / ₄	*5 ² / ₃₂	10 ³ / ₈	*5 ¹ / ₃₂	1 ² / ₃₂	*7 ¹ / ₁₆	4 ¹ / ₁₆	4 ¹ / ₃₂	69°16'
22°	1 ¹ / ₈	9 ³ / ₄	*5 ⁵ / ₈	11 ¹ / ₁₆	*5 ¹ / ₄	1 ² / ₃₂	*7 ¹ / ₄	4 ⁵ / ₃₂	4 ¹ / ₃₂	69°07'
21°	1 ¹ / ₁₆	10 ³ / ₈	*5 ¹ / ₃₂	*11 ¹ / ₁₆	*5	1 ² / ₃₂	*7 ¹ / ₁₆	4 ⁷ / ₃₂	4 ⁵ / ₈	68°58'
20°	1 ² / ₃₂	11	*5 ¹ / ₁₆	*11 ¹ / ₃₂	*4 ² / ₃₂	1 ² / ₃₂	*6 ¹ / ₈	4 ³ / ₃₂	4 ² / ₃₂	68°49'

* Angle exceeds 45°. Pitch given for complement.



$(-\frac{5}{12}) =$ Roof Plane
 $(-\frac{5}{12}) =$ Top of Hip.



Purlin Ends.