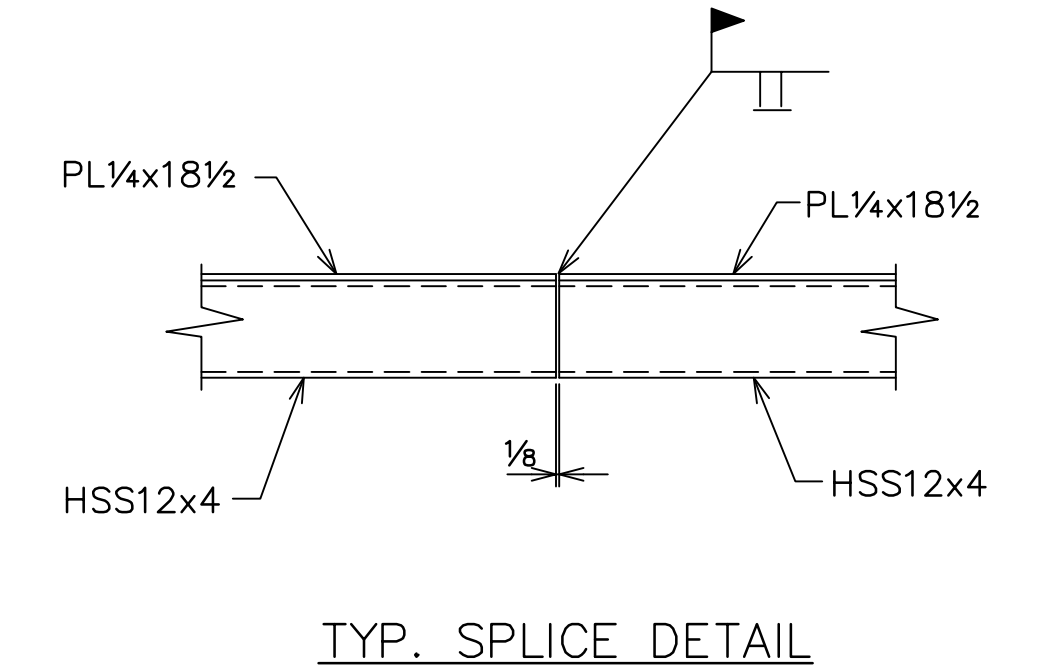
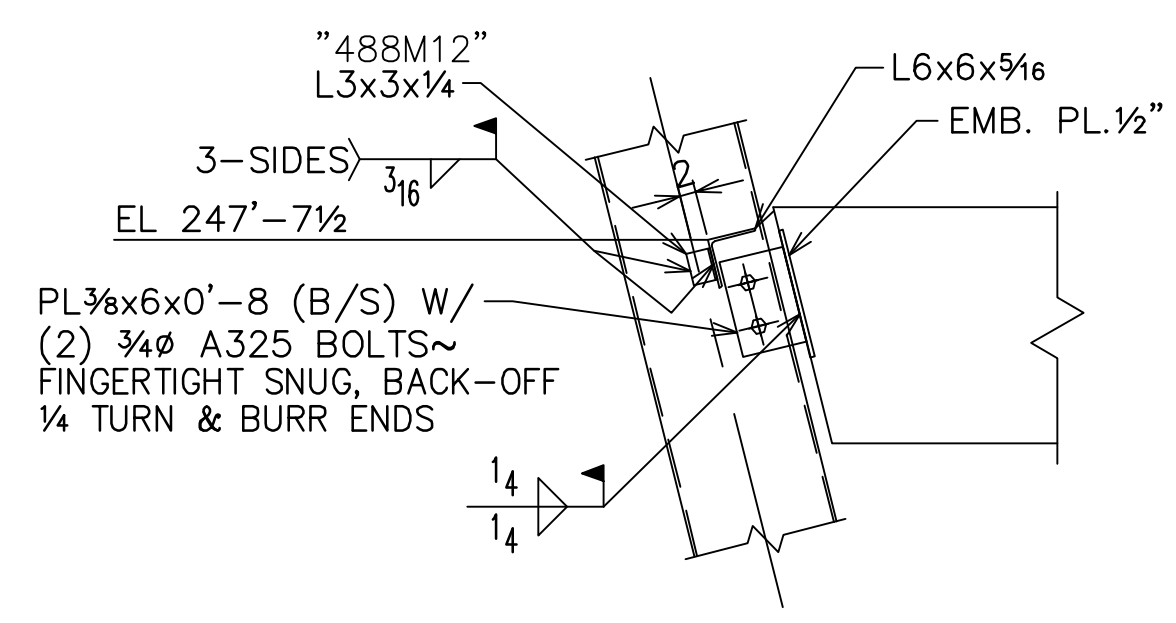


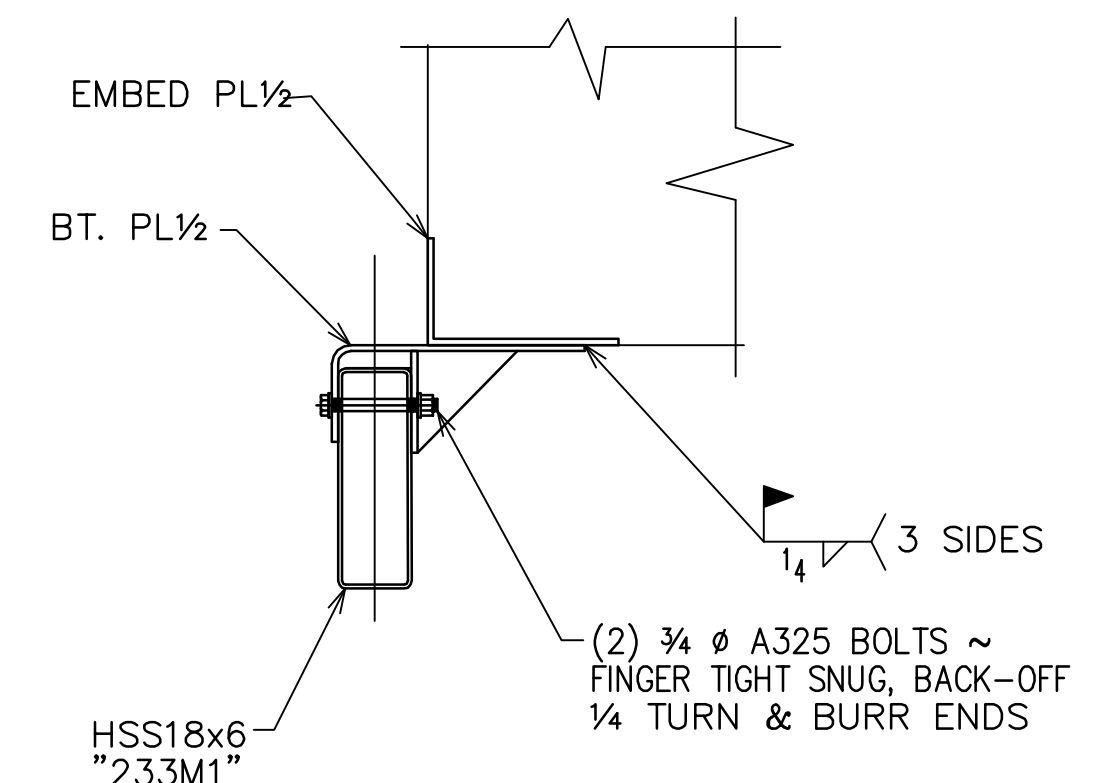
LOOKING SOUTH  
 PARTIAL CLADDING SUPPORT ELEVATION @ NORTH PROJECTION SCREEN  
 FOR SECTIONS & DETAILS NOT SHOWN SEE E426



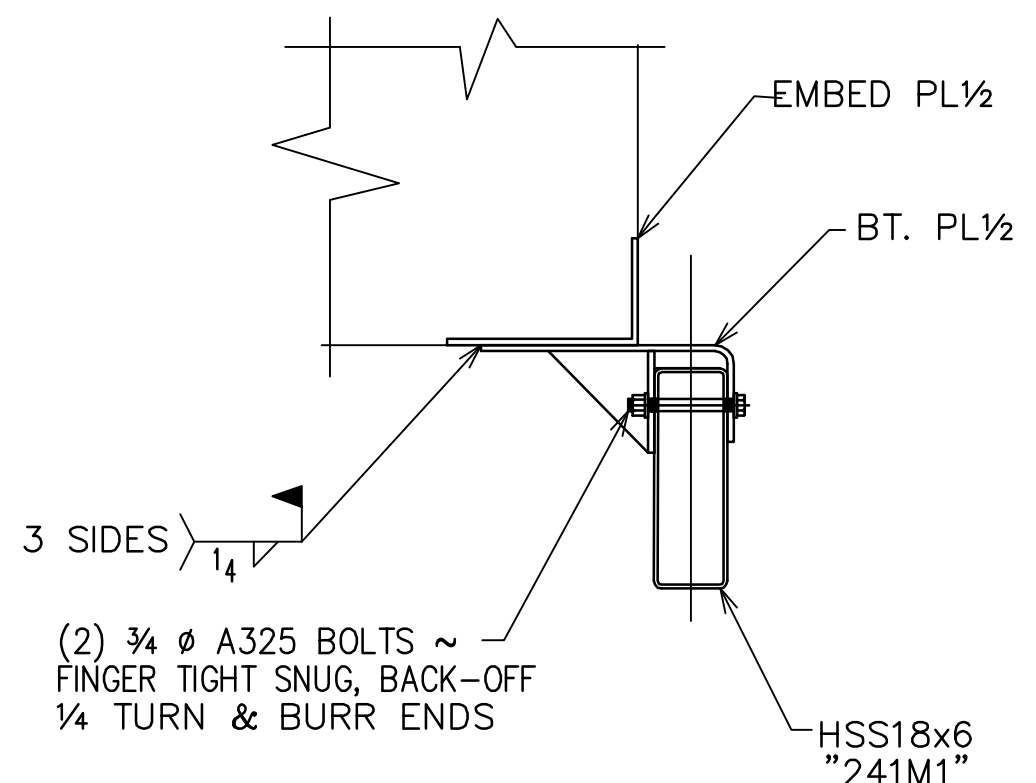
TYP. SPLICE DETAIL



SECTION "J"



SECTION "K"



SECTION "L"

CLADDING SUPPORT SECTOR 3 ~ NORTH PROJECTION SCREEN 1-22-08

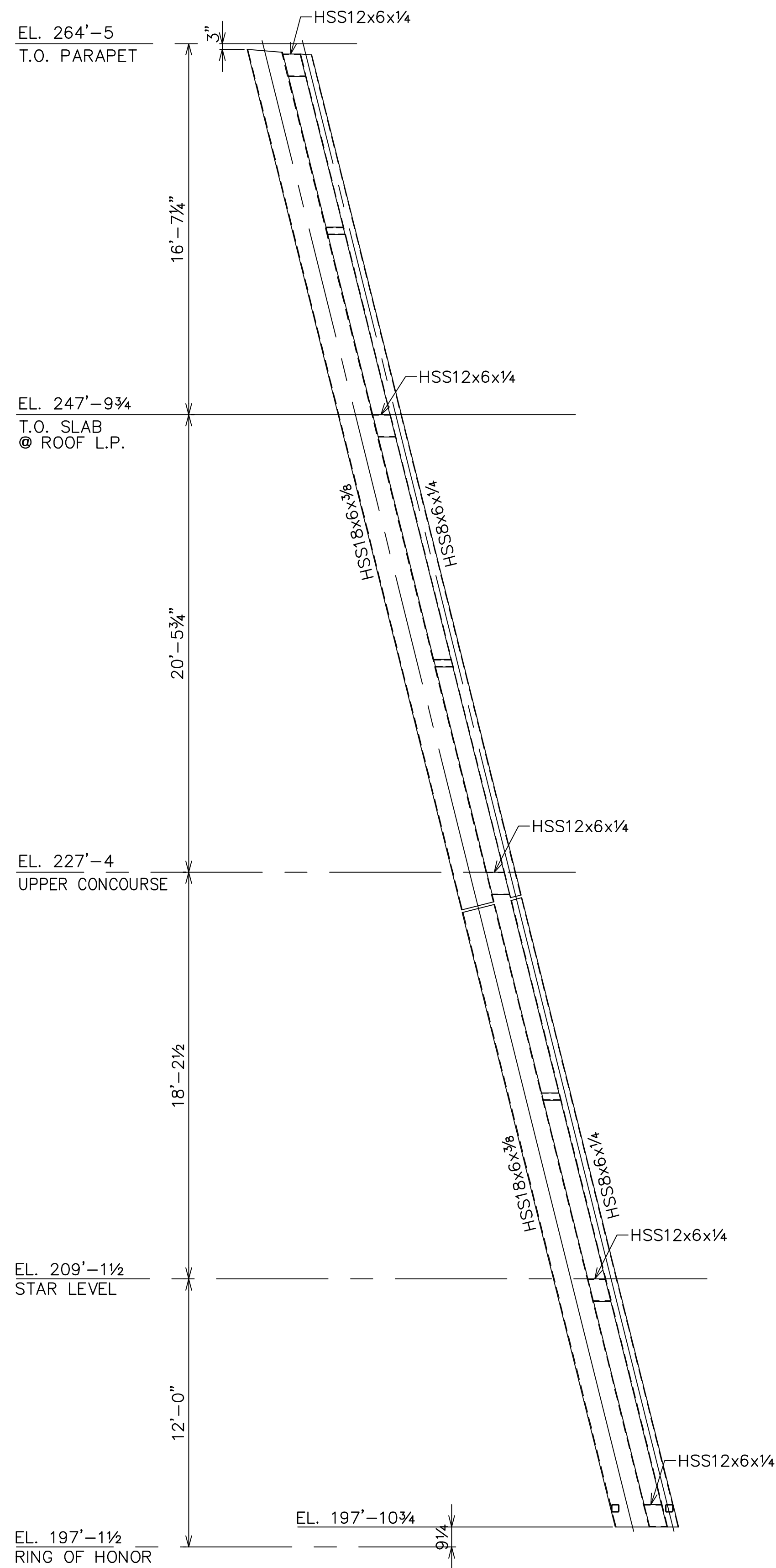
Rev.	Date	Description	By

**IRWIN STEEL**  
 15740 Highway 114 ~ Justin, Texas 76247  
 Phone (817) 636-2508 ~ Fax (817) 636-2506

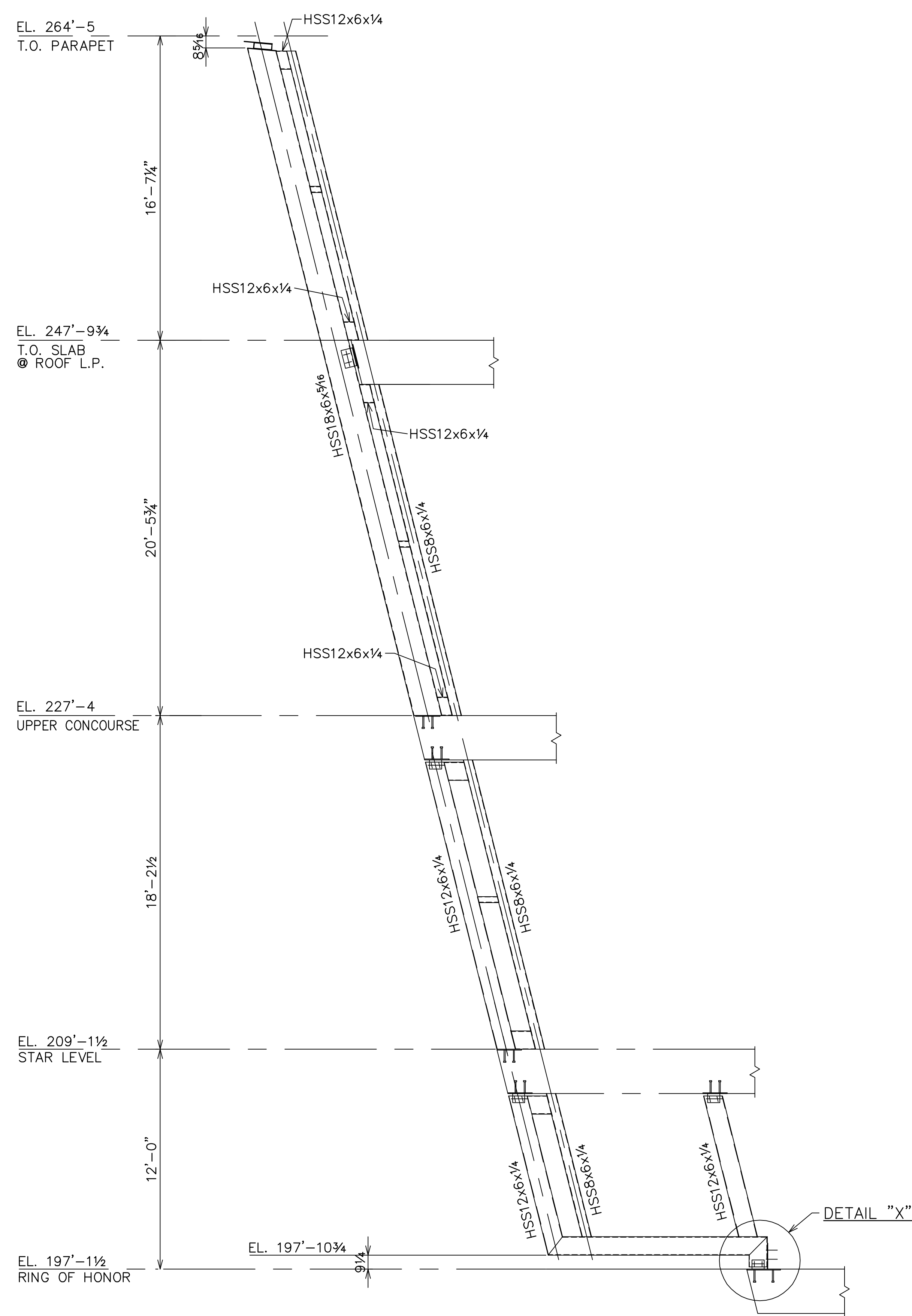
REF: S15.08 (ASI 072), S15.11 (ASI 129), S15.13 (ASI 129), S15.14 (ASI 129)  
 A2.501(ASI-109.1), A2.601(ASI 109.1), A2.701(ASI 109.1), A2.701M(ASI 109.1)  
 A6.30(ASI 105.1), A7.34(ASI 109), S15.15(ASI 072), S15.16(ASI 072)

PRINT RECORD					
Date	Quan.	For	Date	Quan.	For

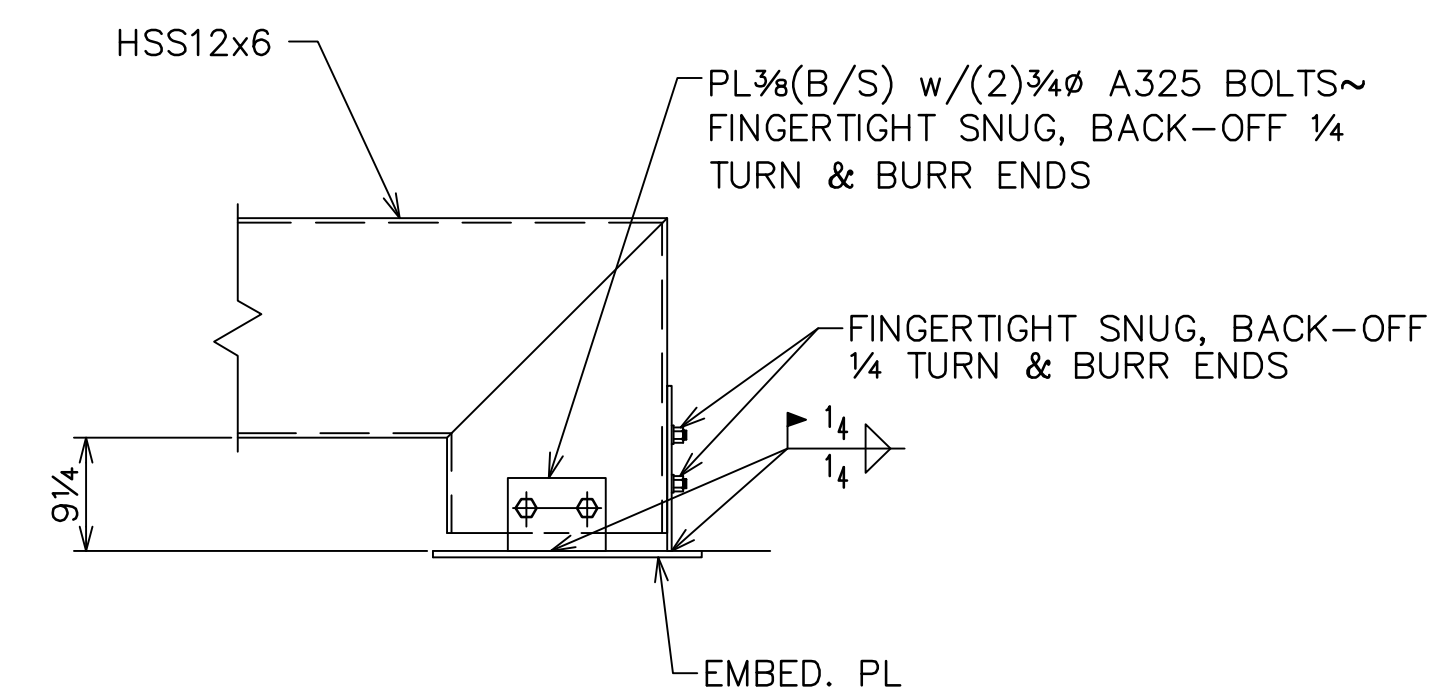
Job Name:	DALLAS COWBOY STADIUM
Location:	ARLINGTON, TEXAS
Customer:	MANHATTAN CONSTRUCTION
Architect:	HKS
DRAWN:	TLN
CHECKED:	ALY
JOB NO:	0639
CAD NO:	
SHEET NO:	E425



SECTION "A-A"



SECTION "B-B"



DETAIL "X"

WORK THIS DWG. WITH DWGS. E424 & E425

REF: S15.08(ASI 072), S15.11(ASI 129), S15.13(ASI 129), S15.14(ASI 129), S15.15(ASI 072), S15.16(ASI 072), A2.501(ASI 109.1), A7.34(ASI 109)

PRINT RECORD					
Date	Quan.	For	Date	Quan.	For

CLADDING SUPPORT SECTIONS ~ SECTOR 3

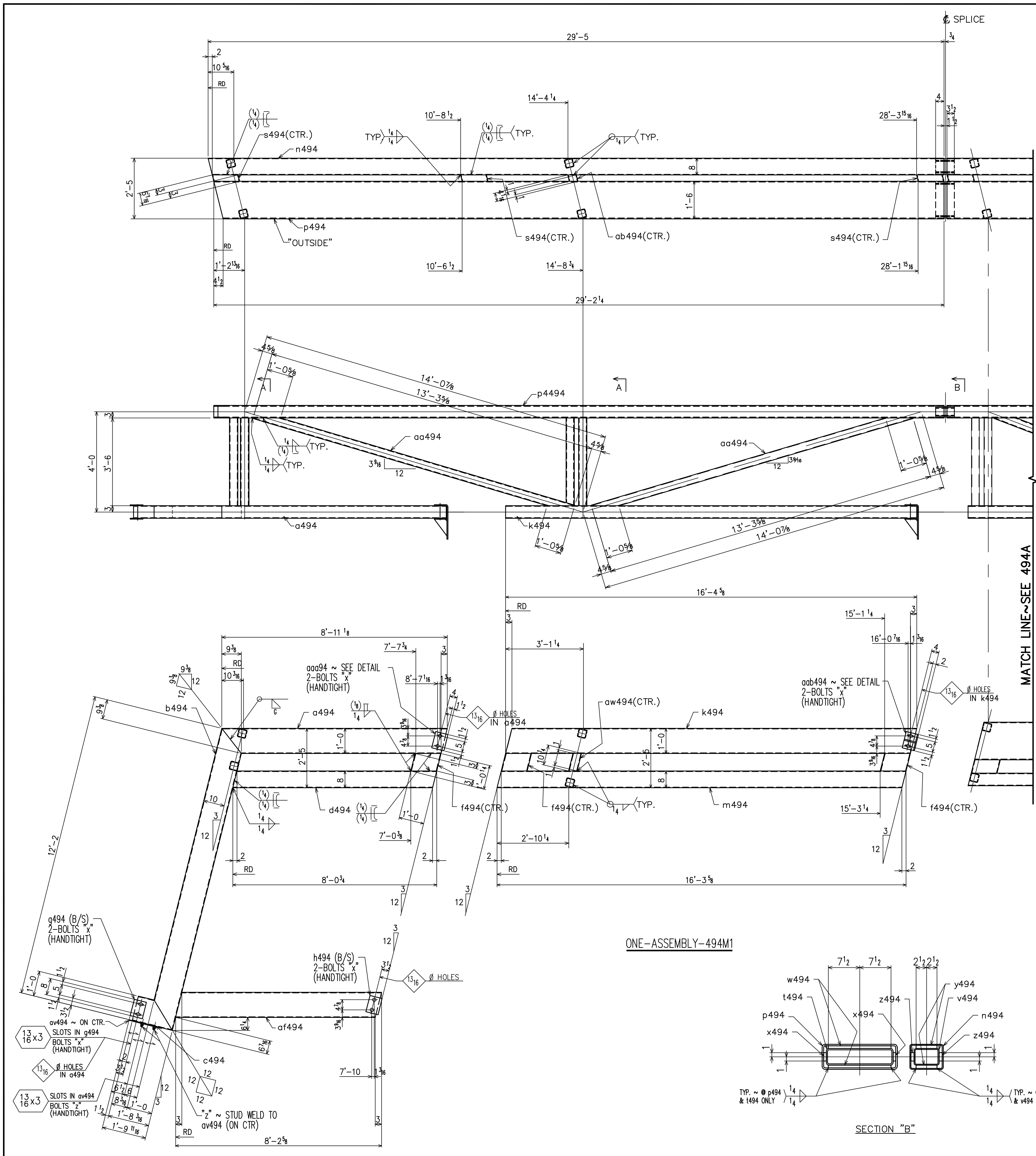
1-23-08

Rev.	Date	Description	By

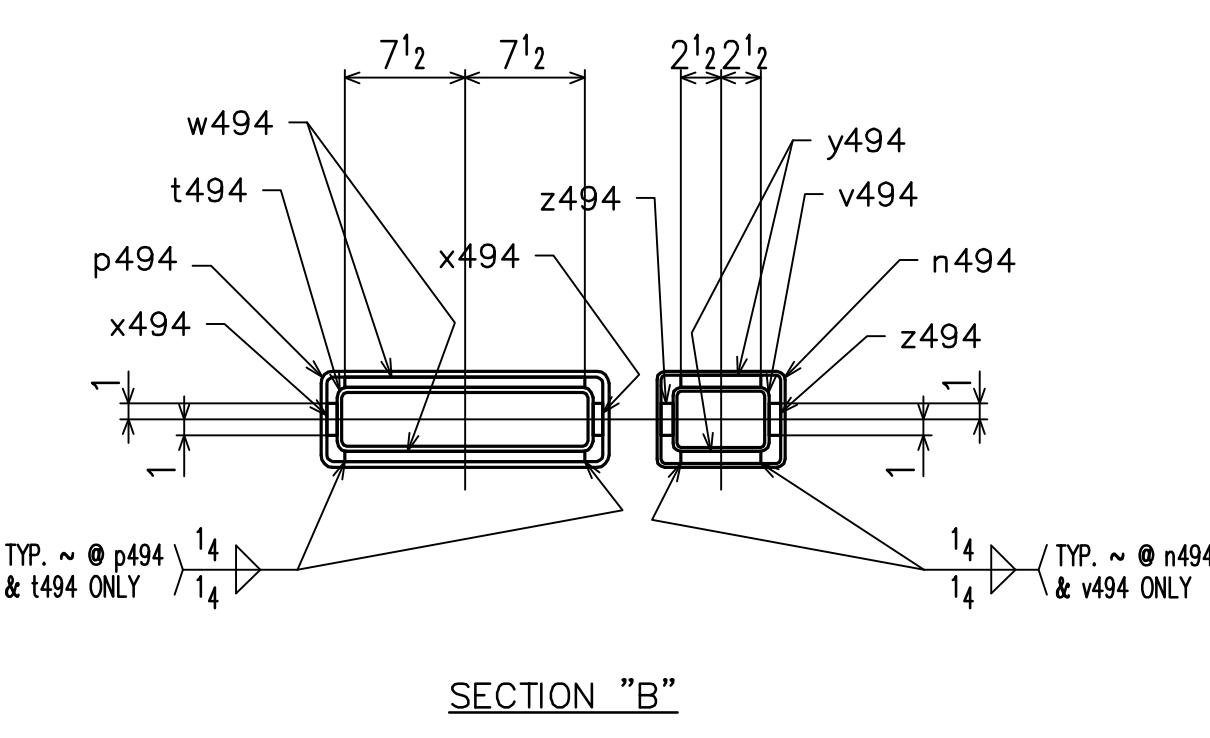
**IRWIN STEEL**  
 15740 Highway 114 ~ Justin, Texas 76247  
 Phone (817) 636-2508 ~ Fax (817) 636-2506

Job Name: DALLAS COWBOY STADIUM  
 Location: ARLINGTON, TEXAS  
 Customer: MANHATTAN CONSTRUCTION  
 Architect: HKS

DRAWN: TLN      JOB NO: 0639      SHEET NO. E426  
 CHECKED: ALY      CAD NO:



SHOP NOTES:  
FOR DETAILS OF "aaa494" &  
"aab494" ~ SEE DWG. 494B



Bill of Materials										
Line	Mark	No.	Tot	Description	Length Ft	In	Piece Mark	Remarks	Weight	Order Item
1	494M1	ONE		ASSEMBLY						
2		1	1	HSS12x6x1/4	8	11 1/8	a494	(A500-B) B2E		
3		1	1	HSS12x6x1/4	12	2	b494	(A500-B) B2E		
4		1	1	HSS12x6x1/4	1	8 3/16	c494	(A500-B) B2E		
5		1	1	HSS8x6x1/4	8	0 3/4	d494	(A500-B) B2E		
6		3	3	HSS12x6x1/4	1	0 1/4	f494	(A500-B) B2E		
7		2	2	PL 3/8x6	0	8	g494			
8		6	6	3/4" A325 BOLTS	0	8 1/4	x	W/N & 2-Ø		
9		2	2	PL 3/8x6	0	8	h494			
10		1	1	HSS12x6x1/4	16	4 5/8	k494	(A500-B) B2E		
11		1	1	HSS8x6x1/4	16	3 5/8	m494	(A500-B) B2E		
12		1	1	HSS8x6x1/4	29	5	n494	(A500-B) B2E		
13		1	1	HSS12x6x3/8	29	2 1/4	p494	(A500-B) B2E		
14		9	9	HSS12x6x1/4	0	6 1/8	s494	(A500-B) B2E		
15		1	1	HSS16x4x1/4	0	9	t494	(A500-B) F2E		
16		1	1	HSS6x4x1/4	0	9	v494	(A500-B) F2E		
17		2	2	PL 9/16x9	1	3	w494			
18		2	2	PL 9/16x2	0	9	x494			
19		2	2	PL 1 1/8x5	0	9	y494			
20		2	2	PL 1 1/8x2	0	9	z494			
21		2	2	HSS4x4x1/4	13	3 5/8	aa494	(A500-B) B2E		
22		5	5	HSS4x4x1/4	0	4 1/8	ab494	(A500-B) B2E		
23		1	1	HSS18x6x3/8	39	4 5/8	ac494	(A500-B) B2E		
24		1	1	HSS8x6x1/4	38	9 1/8	ad494	(A500-B) B2E		
25		1	1	HSS12x6x1/4	8	2 5/8	af494	(A500-B) B2E		
26		2	2	HSS4x4x1/4	10	6 1/8	ag494	(A500-B) B2E		
27		1	1	HSS4x4x1/4	8	6 5/8	ah494	(A500-B) B2E		
28		1	1	HSS4x4x1/4	8	6 11/16	ai494	(A500-B) B2E		
29		1	1	HSS18x6x3/8	37	11 1/16	aj494	(A500-B) B2E		
30		1	1	HSS8x6x1/4	37	5 15/16	ak494	(A500-B) B2E		
31		1	1	PL 1/2 x12	2	8	al494	BENT		
32		1	1	PL 1/2 x8	1	0	am494			
33		1	1	PL 3/8 x8	0	8	an494			
34		4	4	3/4" A325 BOLTS	0	8 1/2	y	W/N & 2-Ø		
35		1	1	HSS4x4x1/4	0	10 1/4	aw494	(A500-B) B2E		
36		12	12	HSS4x4x1/4	3	6	ax494	(A500-B) F2E		
37		6	6	HSS4x4x1/4	3	9 15/16	ay494	(A500-B) B2E		
38		2	2	PL 1/4 x6	1	7	az494			
39		1	1	PL 3/8 x4	1	4	av494			
40		2	2	3/4" THD'D STUDS	0	3 1/2	z	W/N & Ø		
41		1	1	PL 1/2 x8	1	10	aaa494	BENT		
42		1	1	PL 1/2 x8	1	10	aab494	BENT		
43		1	1	PL 1/2 x6	0	8	aac494			
44		1	1	PL 1/2 x6	0	8	aad494			
45		2	2	PL 3/8 x6	0	6	aaf494			
46										
47										
48										
49										
50										
FIELD BOLTS										

STEEL DETAILS~CLADDING SUPPORT SECTOR 3 DATE 12-19-07

SHOP NOTES  
1. ALL STEEL A36 U.N.  
HOLES: 15/16" U.N.O.  
PAINT: 1 S/C PRIMER (U/N)

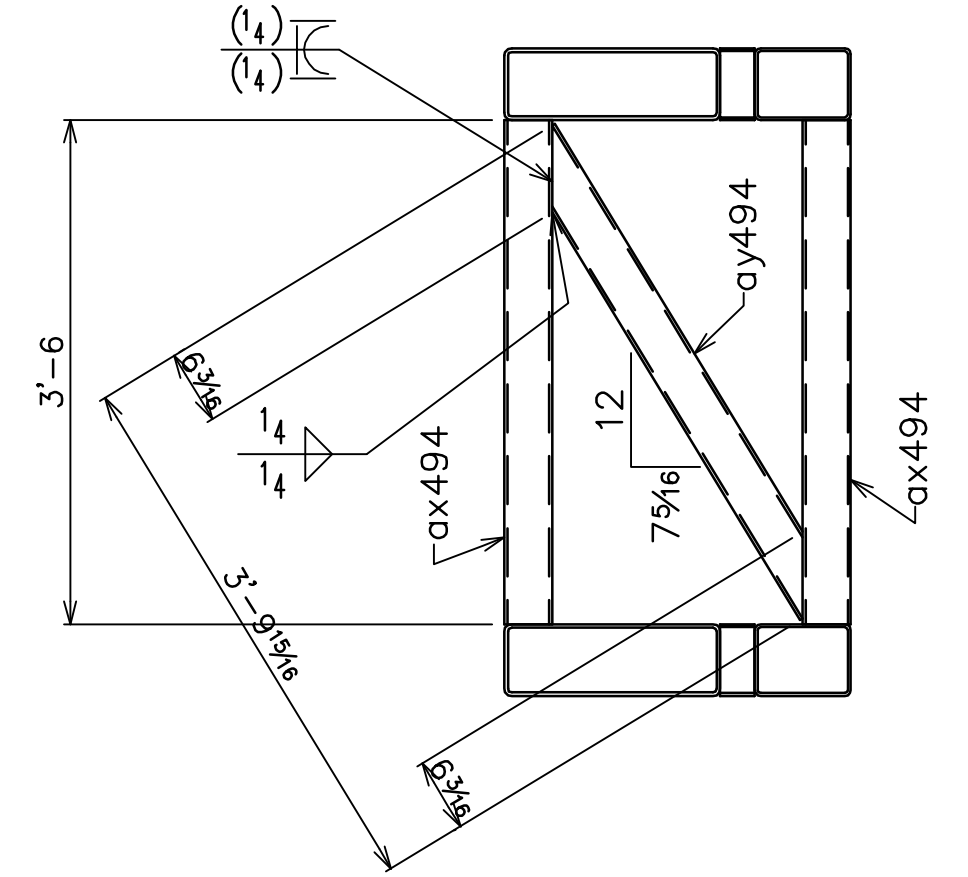
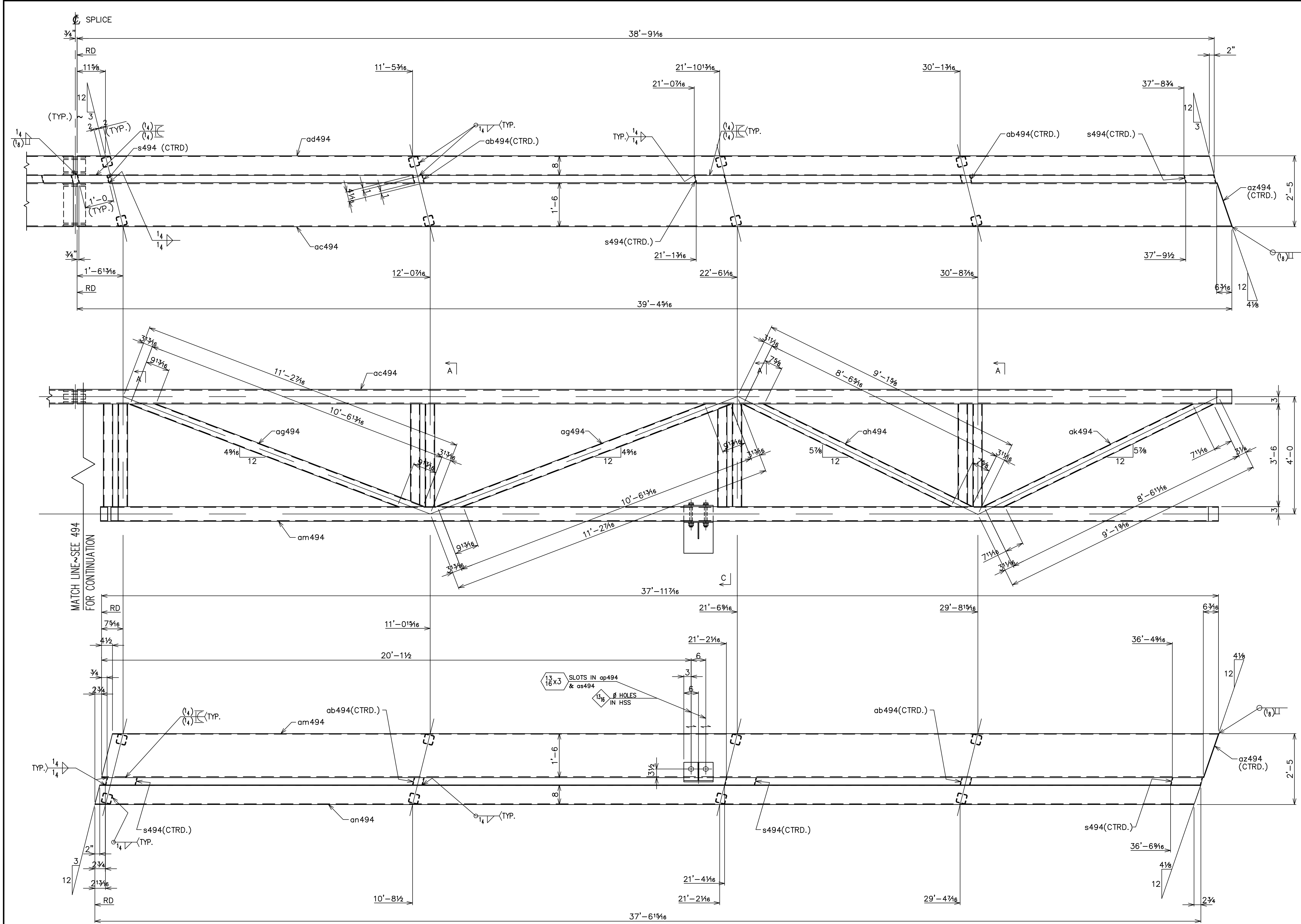
PRINT RECORD					
Date	Quan.	For	Date	Quan.	For

Rev.	Date	Description	By

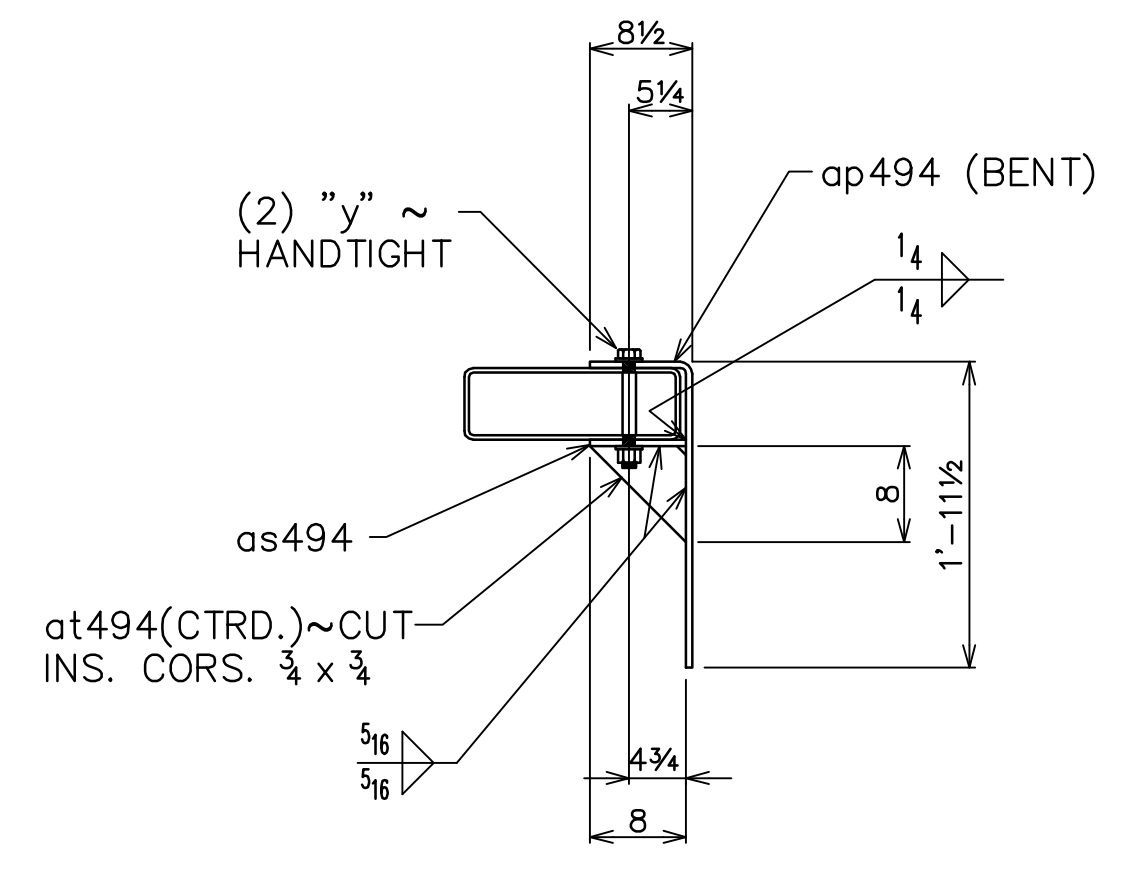
**IRWIN STEEL**  
15740 Highway 114 ~ Justin, Texas 76247  
Phone (817) 636-2508 ~ Fax (817) 636-2506

Job Name: DALLAS COWBOY STADIUM  
Location: ARLINGTON, TEXAS  
Customer: MANHATTAN CONSTRUCTION  
Architect: HKS

DRAWN: TLN      JOB NO: 0639      SHEET NO: 494  
CHECKED: ALY      CAD NO:



SECTION "A"



SECTION "C"

ONE-ASSEMBLY-494M1 (CONT.)

SHOP NOTES  
 1. ALL STEEL A36 U.N.  
 HOLES: 15/16" U.N.O.  
 PAINT: 1 S/C PRIMER (U/N)

**PRINT RECORD**

Date	Quan.	For	Date	Quan.	For

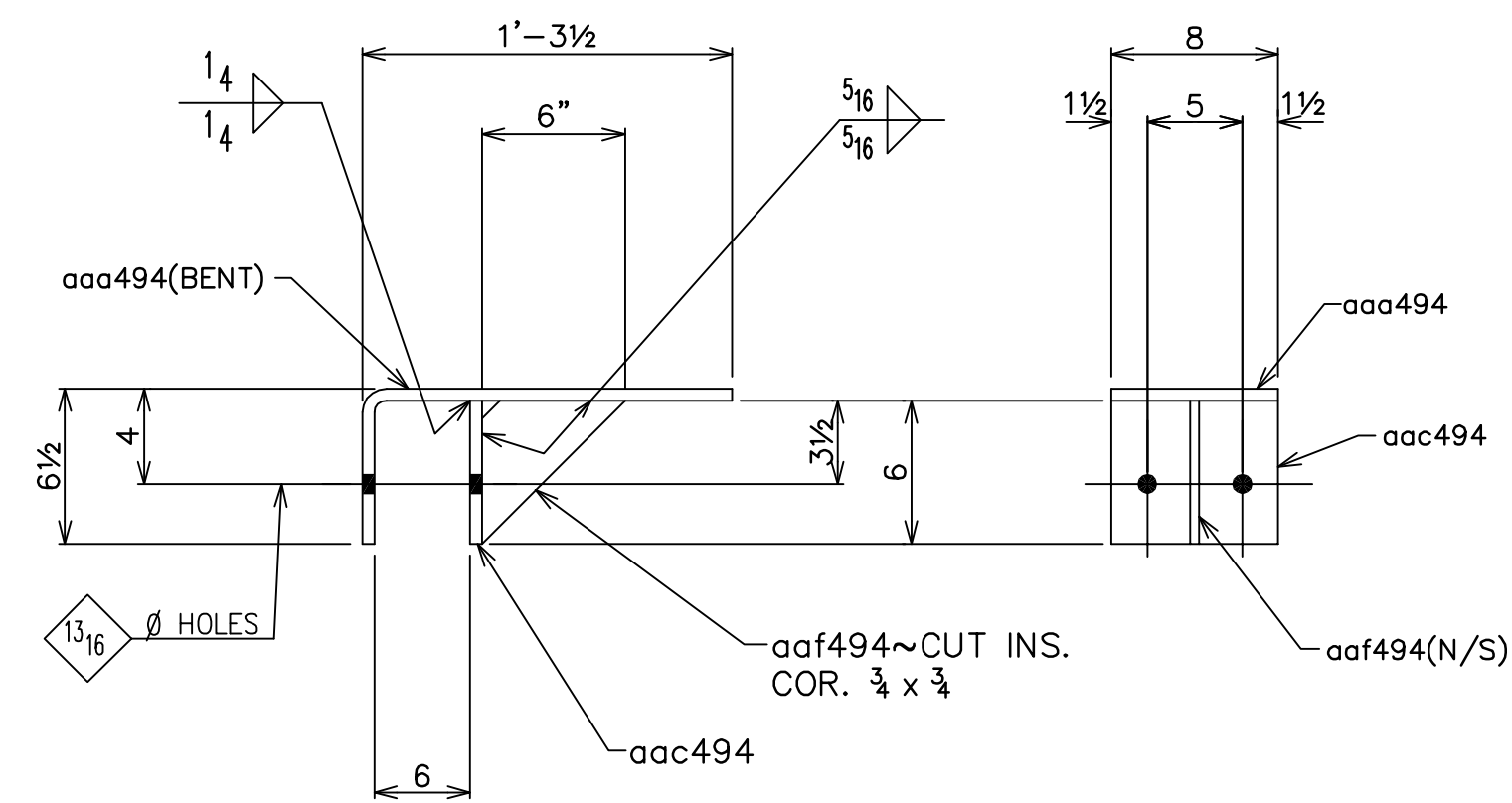
STEEL DETAILS~CLADDING SUPPORT SECTOR 3 DATE 12-20-07

Rev.	Date	Description	By

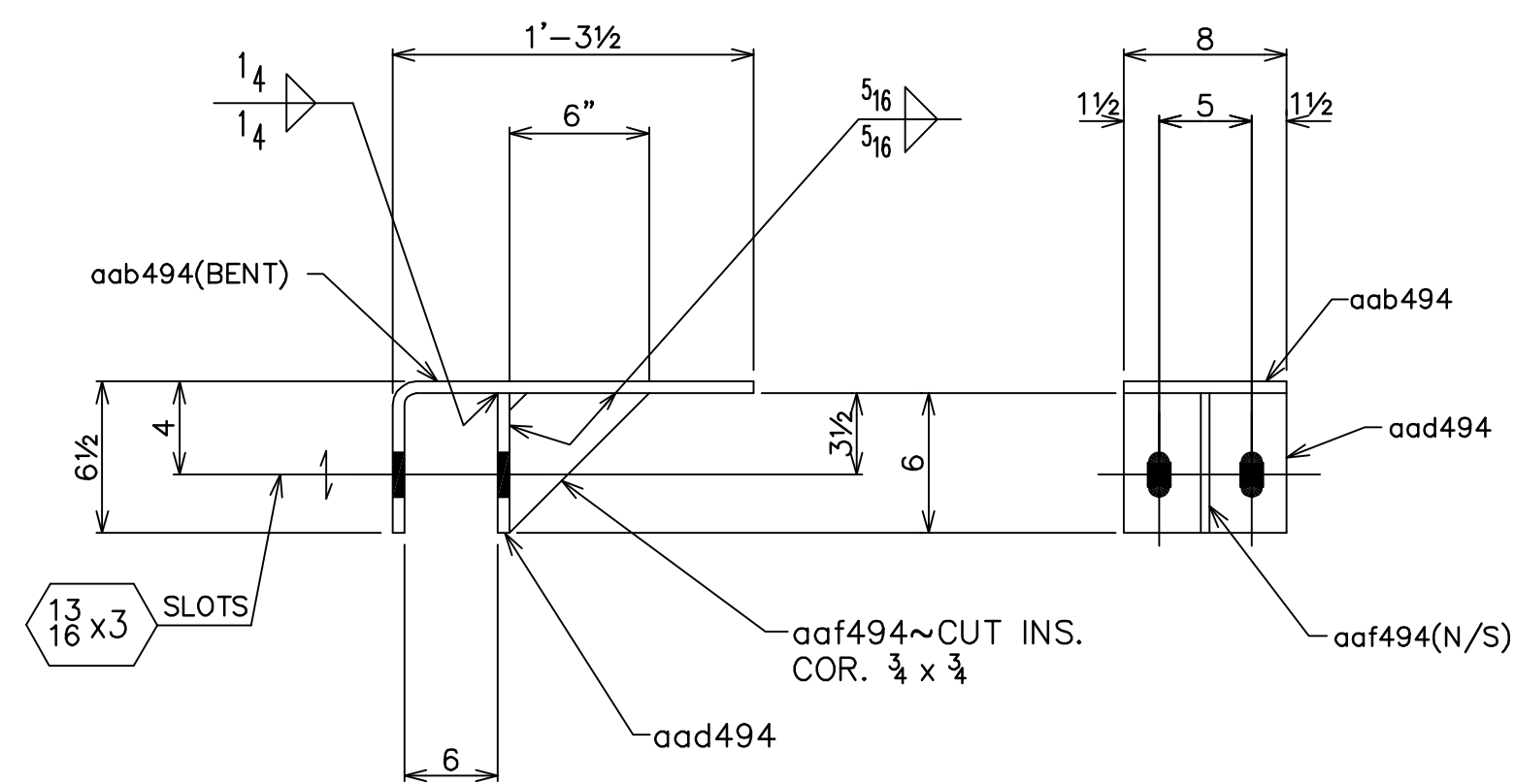
**IRWIN STEEL**  
 15740 Highway 114 ~ Justin, Texas 76247  
 Phone (817) 636-2508 ~ Fax (817) 636-2506

Job Name: DALLAS COWBOY STADIUM  
 Location: ARLINGTON, TEXAS  
 Customer: MANHATTAN CONSTRUCTION  
 Architect: HKS

DRAWN: TLN JOB NO: 0639 SHEET NO:  
 CHECKED: ALY CAD NO: 494A



DETAIL "aaa494"



DETAIL "aab494"

SHOP NOTE:  
 WORK THIS DWG. W/ DWG. 494

SHOP NOTES  
 1. ALL STEEL A36 U.N.

HOLES: 15/16" U.N.O.

PAINT: 1 S/C PRIMER (U/N)

PIECE DETAILS "aaa494" & "aab494" DATE 12-27-07

Rev.	Date	Description	By

**IRWIN STEEL**  
 15740 Highway 114 ~ Justin, Texas 76247  
 Phone (817) 636-2508 ~ Fax (817) 636-2506

PRINT RECORD					
Date	Quan.	For	Date	Quan.	For

Job Name:	DALLAS COWBOY STADIUM		
Location:	ARLINGTON, TEXAS		
Customer:	MANHATTAN CONSTRUCTION		
Architect:	HKS		
DRAWN:	S.A.I.	JOB NO:	0639
CHECKED:	ALY	CAD NO:	
			SHEET NO. 494B