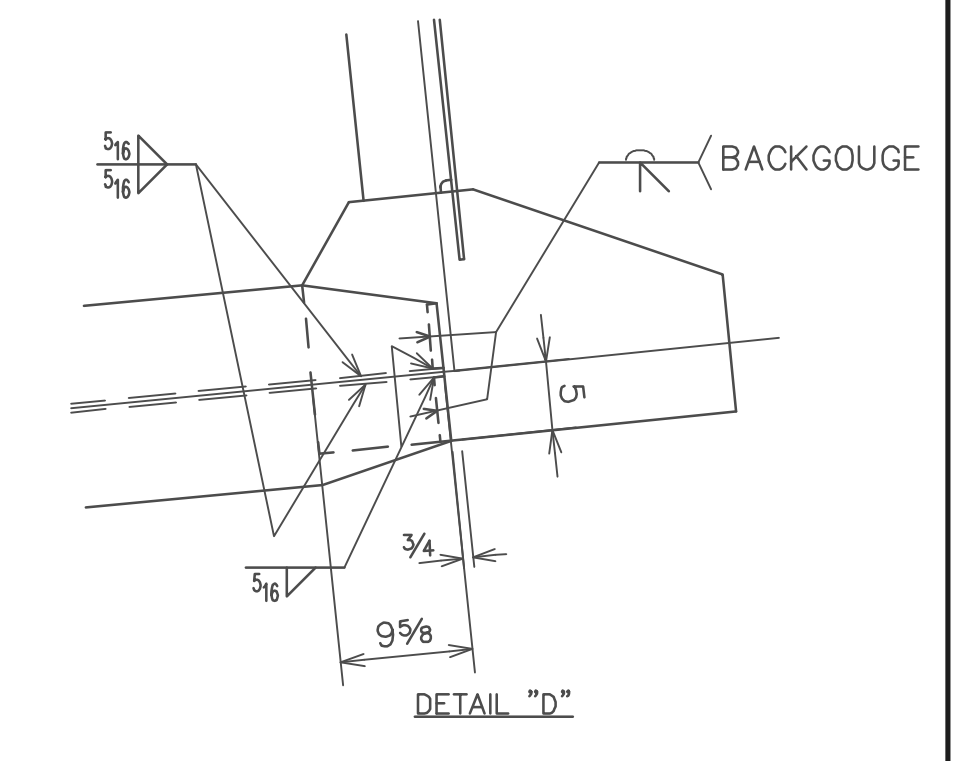
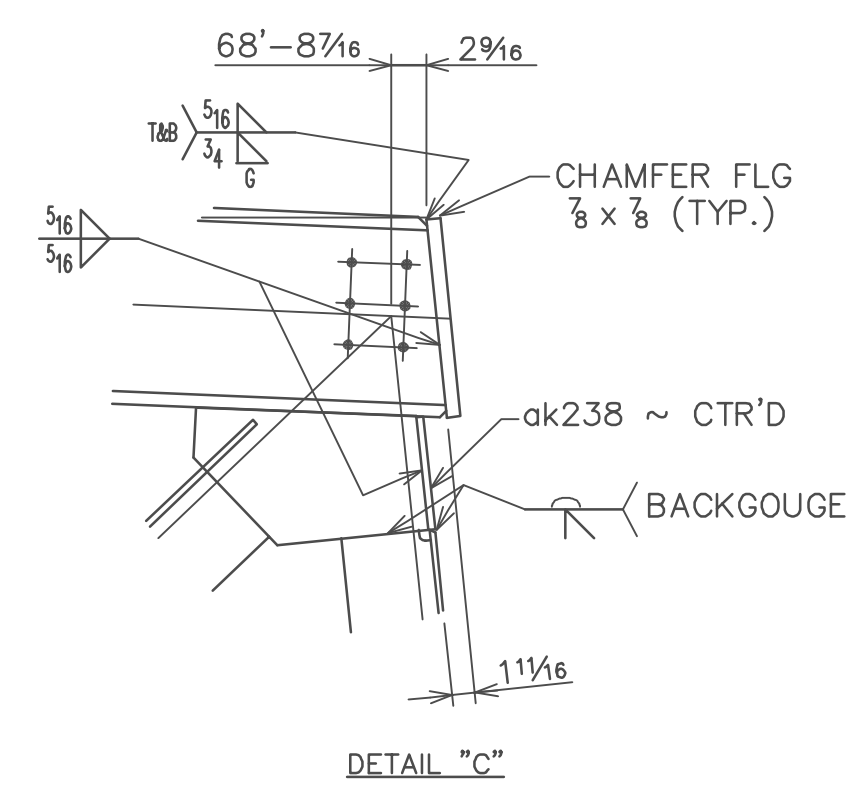
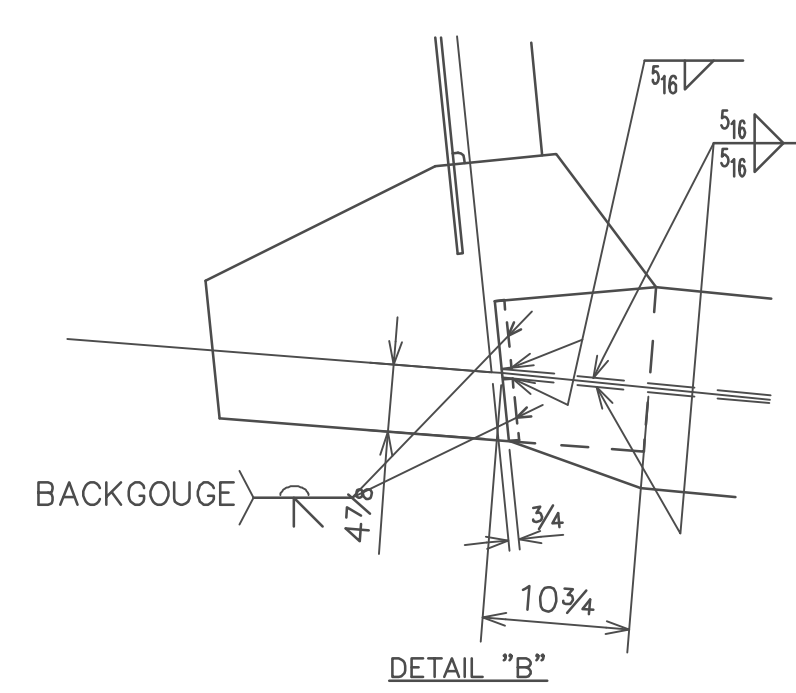
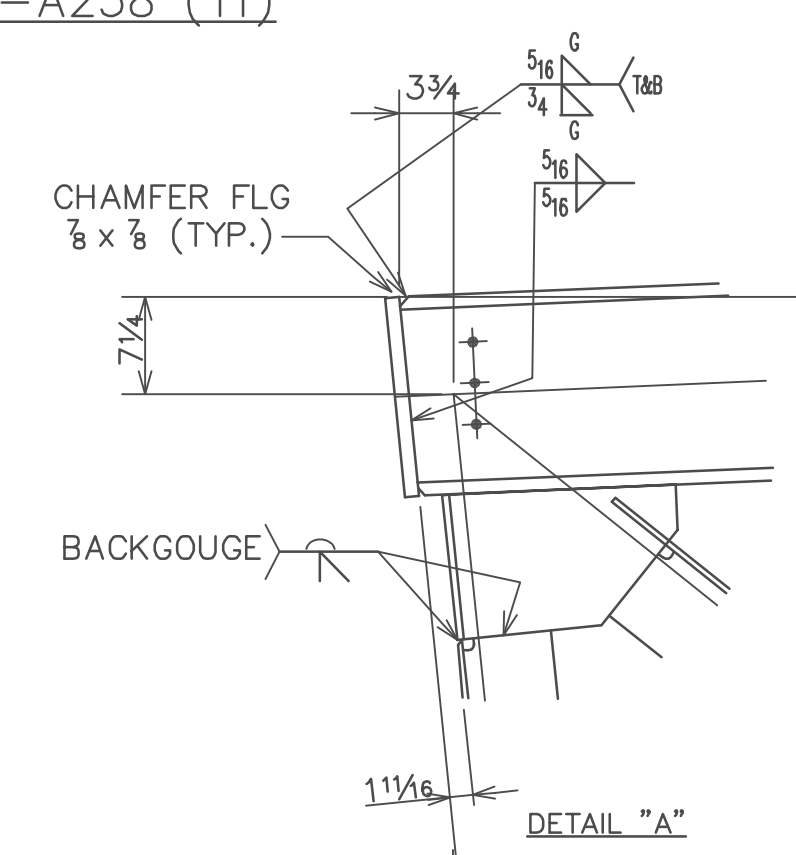
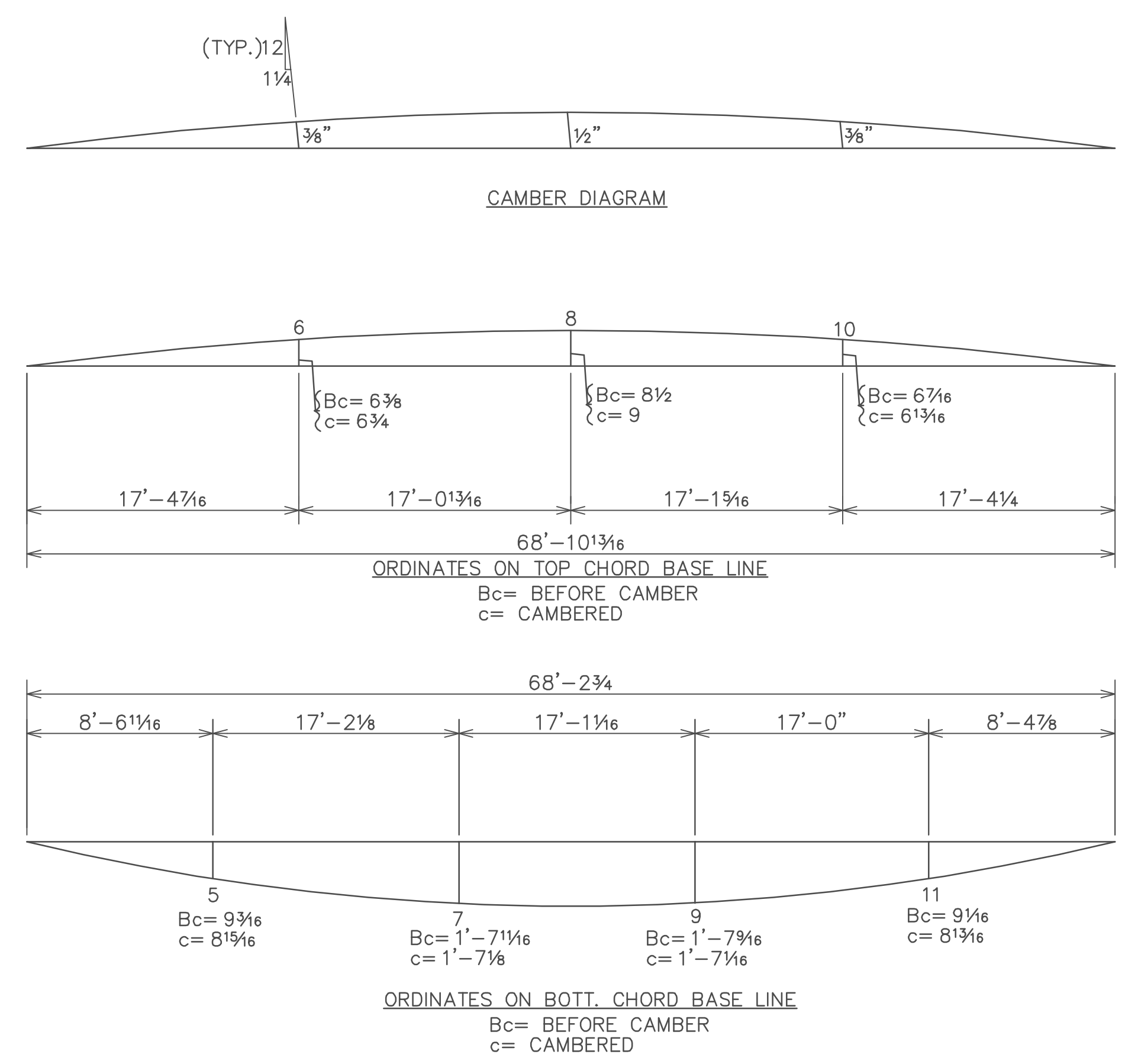


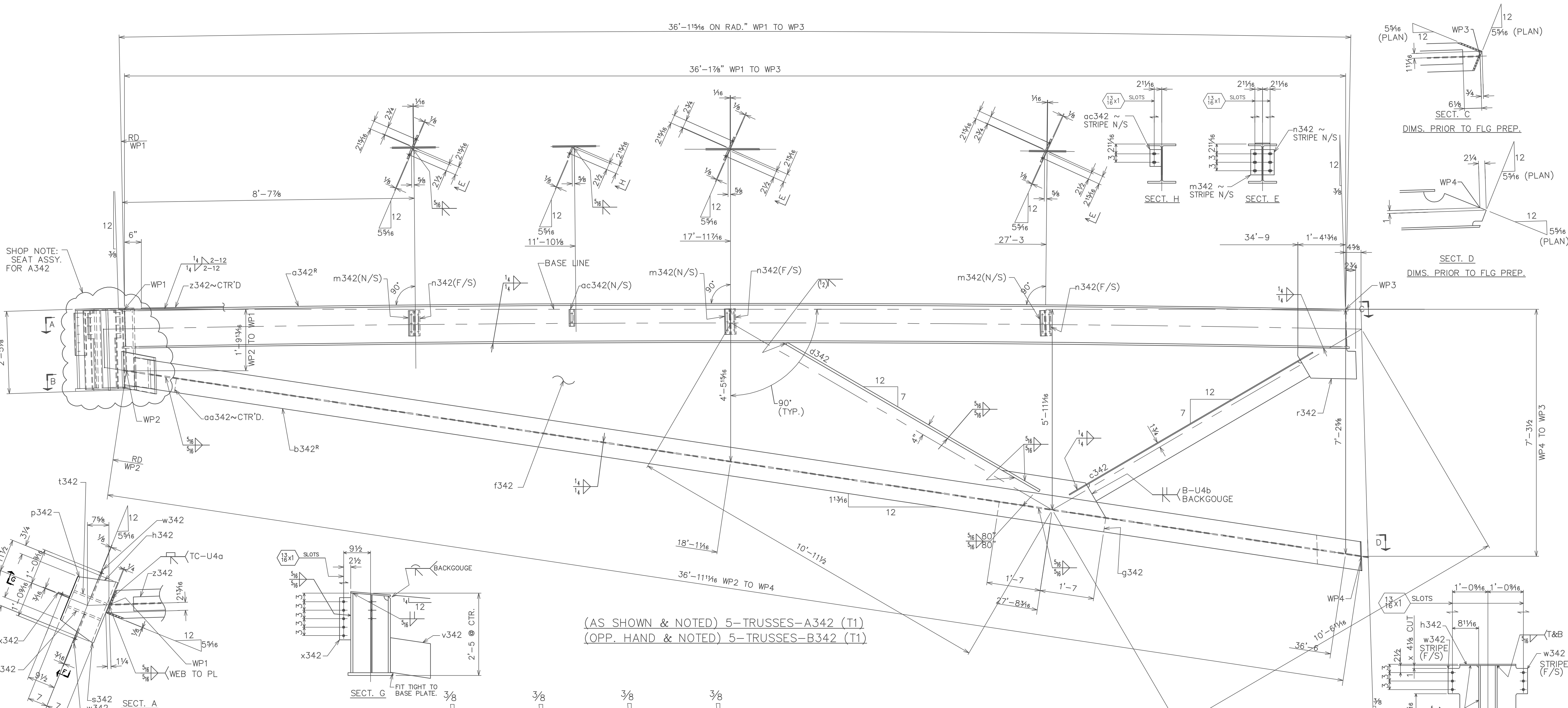
8-TRUSSES-A238 (T1)

BILL OF MATERIAL										
2C	ABM	3C	ABM	MARK	NO REQ'D	DESCRIPTION	LENGTH FT	IN	TOTAL WEIGHT	REMARKS
	3	5		A238	8	TRUSSES				
	3	9/2	5	10/2	a238	8	W14x120 (A992)	68	11	ROLLED
	3	9/3	5	10/3	b238	8	W14x120 (A992)	68	4 3/4	ROLLED
	3	9/20	5	10/22	c238	8	WT7x15 (A992)	4	4 3/4	
	3	9/15	5	10/16	d238	8	WT7x17 (A992)	9	8 3/8	
	3	9/24	5	11/2	f238	8	WT7x13 (A992)	9	2 3/4	
	3	9/14	5	10/15	g238	8	WT7x17 (A992)	10	11 1/2	
	3	9/23	5	11/1	h238	8	WT7x13 (A992)	10	0 1/2	
	3	9/23	5	11/1	k238	8	WT7x13 (A992)	11	1 1/2	
	3	9/14	5	10/15	m238	8	WT7x17 (A992)	9	10 1/2	
	3	9/24	5	11/2	n238	8	WT7x13 (A992)	10	2 3/4	
	3	9/16	5	10/17	p238	8	WT7x17 (A992)	8	9	
	3	9/19	5	10/21	r238	8	WT7x15 (A992)	4	8 3/4	
	6	11/1	10	11/1	s238	16	PL1x14 1/2 (A572-50)	1	2 5/8	
	3	11/1/3	5	11/1/3	t238	8	PL 1/2x10 9/8 (A572-50)	1	2 5/8	
	3	11/1/5	5	11/1/5	v238	8	PL 3/4x10 9/8 (A572-50)	1	4 1/4	
	3	11/1/7	5	11/1/7	w238	8	PL 1 1/2x21 1/8 (A572-50)	2	8 3/4	
	6	11/1/9	10	11/1/9	x238	16	PL 3/4x5 (A572-50)	0	5 1/2	
	6	11/1/11	10	11/1/11	y238	16	PL 3/4x4 1/2 (A572-50)	0	5 1/2	
	3	11/1/13	5	11/1/13	z238	8	PL 3/4x12 1/2 (A572-50)	2	8 1/2	
	3	11/1/15	5	11/1/15	aa238	8	PL 3/4x10 (A572-50)	2	5 1/2	
	3	11/1/17	5	11/1/17	ab238	8	PL 3/4x12 1/2 (A572-50)	2	6	
	3	11/1/19	5	11/1/19	ac238	8	PL 3/4x10 (A572-50)	2	4 1/4	
	3	11/1/21	5	11/1/21	ad238	8	PL 3/4x12 1/2 (A572-50)	2	6	
	3	11/1/23	5	11/1/23	ae238	8	PL 3/4x10 (A572-50)	2	5 3/4	
	3	11/1/25	5	11/1/25	af238	8	PL 3/4x12 1/2 (A572-50)	2	8 1/2	
	3	11/2/1	5	11/2/1	ah238	8	PL 3/4x10 3/4 (A572-50)	1	4 1/2	
	3	11/2/3	5	11/2/3	ak238	8	PL 1/2x8 3/8 (A572-50)	1	2 5/8	
	3	11/2/5	5	11/2/5	am238	8	PL 1 1/2x18 (A572-50)	2	6 1/2	
	12	11/2/7	20	11/2/7	an238	32	PL 3/4x4 3/4 (A572-50)	0	5 1/2	
FIELD BOLTS										

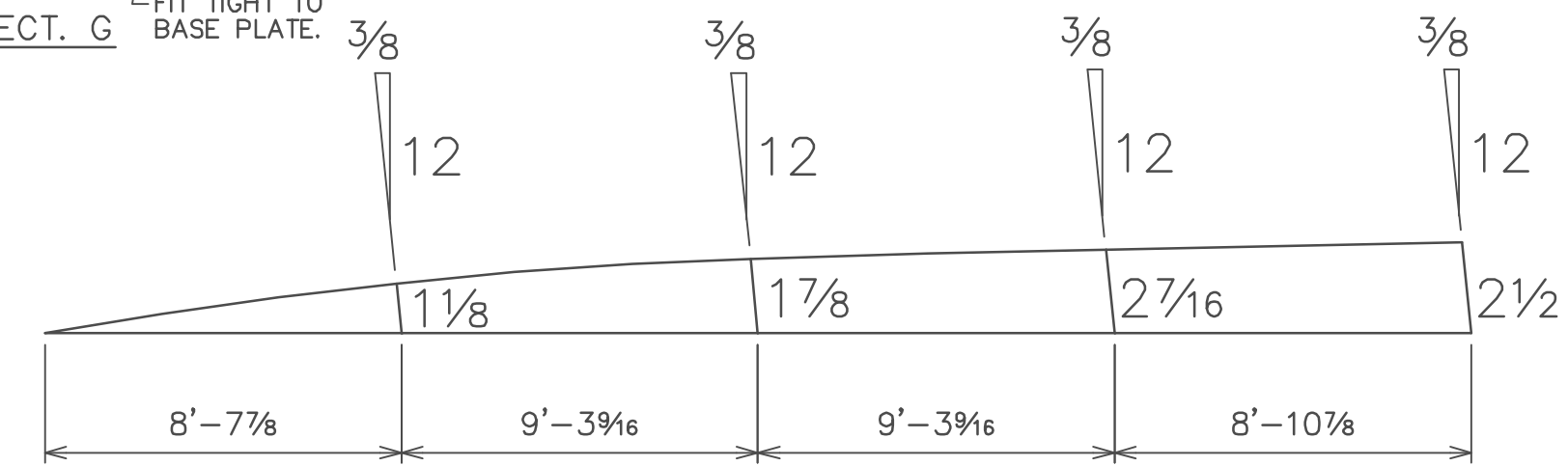


SHOP NOTE:
 TOP CHORD BASE LINE IS LEVEL
 BEVELS SHOWN ARE NORMAL TO TOP CHORD BASE LINE
 TOP CHORD EXTENSION DIMS. ARE ALONG ARC OF TOP FLG.
 BOTT. CHORD EXTENSION DIMS ARE ALONG ARC OF CL.
 CAMBER HAS BEEN FIGURED INTO TRUSS
 WORK THIS DWG WITH 239, 240, 241

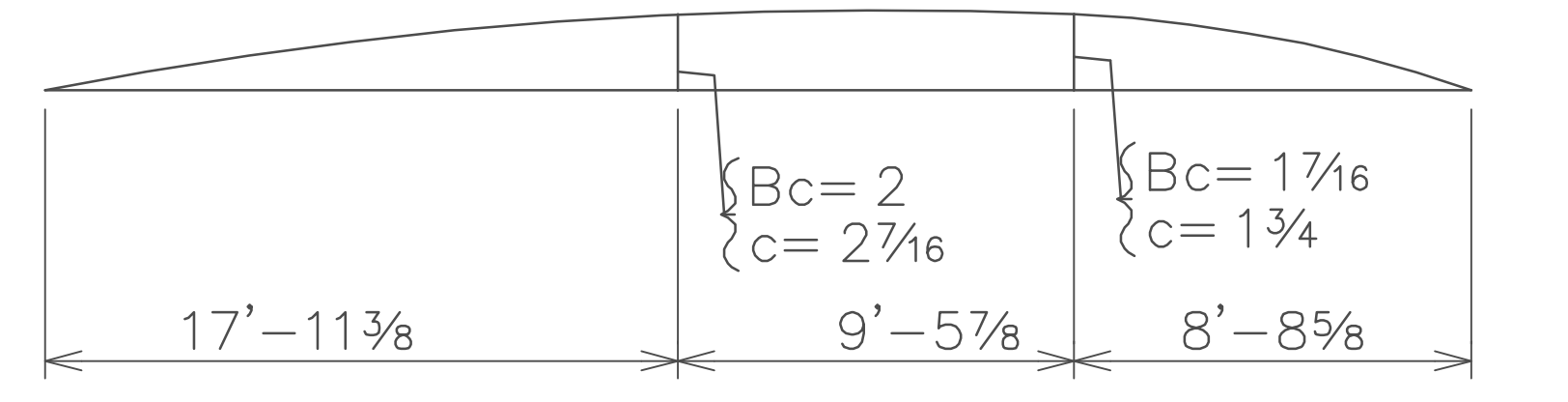
PAINT		SHOP PRIME	
MATERIAL	GRADE 50 U/NOTED		
HOLES	13/16 U/NOTED		
ELECTRODES	E70XX-LH		
TOTAL WEIGHT		NO DATE	DESCRIPTION
DIAG. REF #		NO DATE	DESCRIPTION
REVISIONS			
DRAFTER TJS	CUSTOMER KINSLEY CONSTRUCTION	CONTRACT NO 2070-050	
DATE 7/29/04		DWG NO	
CHECKED RGY	STRUCTURE YORK COLLEGE SPORTS FACILITY		
DATE 12/25/04			238



(AS SHOWN & NOTED) 5-TRUSSES-A342 (T1)
 (OPP. HAND & NOTED) 5-TRUSSES-B342 (T1)



CAMBER DIAGRAM



ORDINATES ON TOP CHORD BASE LINE

Bc= BEFORE CAMBER
 c= CAMBERED

BILL OF MATERIAL								
3C	ABM	MARK	NO REQ'D	DESCRIPTION	LENGTH FT	IN	TOTAL WEIGHT	REMARKS
	5	A342	5	TRUSSES	36	4 1/16		ROLLED, BEV.2E.
	5	B342	5	TRUSSES	37	3		BEV.2E.
	10/11	a342	5/5	W14x61 (A992)	29	4 3/4		
	10/9	b342	5/5	W14x61 (A992)	29	4 3/4		
	11/6	c342	10	WT7x11 (A992)	8	4		
	T1_7/1	d342	10	PL 7/8x10 (A572-50)	8	7 1/2		
	T1_3/1	f342	10	PL 3/4x4 1/4 (A572-50)	3	2		
	T1_7/5	q342	10	PL 3/4x4 3/4 (A572-50)	3	2		
	T1_7/7	h342	5	PL 1/2x14 (A572-50)	1	11		
	T1_7/9	k342	5	PL 1x16 (A572-50)	1	11		
	T1_7/11	m342	30	PL 3/8x4 (A572-50)	0	9		
	T1_7/13	n342	30	PL 3/8x4 1/4 (A572-50)	0	9		
	T1_7/15	p342	5	PL 3/4x16 1/2 (A572-50)	2	3 3/8		
	T1_7/17	r342	10	PL 3/4x11 (A572-50)	1	9		
	T1_7/19	s342	5	PL 3/4x23 (A572-50)	2	3 3/8		
	T1_7/21	t342	10	PL 3/8x12 1/2 (A572-50)	2	3 3/8		
	T1_7/23	v342	5	PL 1 1/2x12 1/4 (A572-50)	1	2 1/2		
	T1_7/25	w342	10	PL 3/8x10 1/4 (A572-50)	2	3 3/16		
	T1_8/1	x342	10	PL 3/8x4 (A572-50)	1	3		
	T1_8/3	z342	10	PL 3/8x5 (A36)	35	1 3/4		
	T1_8/5	aa342	10	PL 3/4x4 3/4 (A572-50)	1	6		
	T1_9/11	ac342	10	PL 3/8x4 (A572-50)	0	6		

SHOP NOTE:
 TOP CHORD BASE LINE IS LEVEL
 BEVELS SHOWN ARE NORMAL TO TOP CHORD BASE LINE
 TOP CHORD EXTENSION DIMS. ARE ALONG ARC OF TOP FLG.
 CAMBER HAS BEEN FIGURED INTO TRUSS
 WORK THIS DWG WITH 343, 344

PAINT		SHOP PRIME	
MATERIAL	GRADE 50 U/NOTED		
HOLES	13/16 U/NOTED		
ELECTRODES	E70XX-LH		
TOTAL WEIGHT		NO DATE	DESCRIPTION
DIAG. REF #		NO DATE	DESCRIPTION

DRAFTER TJS
 DATE 8/4/04
 CHECKED RGY
 DATE 2/2/05

CUSTOMER KINSLEY CONSTRUCTION
 STRUCTURE YORK COLLEGE SPORTS FACILITY

CONTRACT NO 2070-050
 DWG NO 342