

BILL OF MATERIAL

1A	1B	1C	ABM	MARK	NO	DESCRIPTION	LENGTH	TOTAL	REMARKS
					REQ'D		FT	WEIGHT	
							IN		
1			AB	ONE		TRUSS			
			2/4	a8	1	W14x145	30	2 1/2	
			3/5	b5	2	W10x100	11	9 3/8	PREP.2E.
			3/4	c5	1	W10x100	15	1 3/4	BEV.2E.;PREP.2E.
			3/5	d5	1	W10x100	11	9 1/2	BEV.2E.;PREP.2E.
			16/5	f5	6	L4x3 x 3/8 (A36)	0	8 1/2	
			13/5	g5	5	PL 1 x 12 1/2 (A36)	2	8 3/4	
			13/7	h5	5	PL 1 x 9 1/2 (A36)	1	0 1/2	
			13/17	m5	3	PL 3/4 x 7 3/8 (A36)	1	0 5/8	
			13/15	p5	7	PL 3/4 x 7 3/8 (A36)	1	0 5/8	
			13/13	t5	2	PL 3/4 x 7 3/8 (A36)	1	0 5/8	
			13/9	v5	1	PL 1 x 7 (A36)	1	0 5/8	
			13/9	w5	1	PL 1 x 7 (A36)	1	0 5/8	
			2/11	b8	1	W14x120	30	0 1/2	A
			13/25	ab5	2	PL 3/4 x 7 (A36)	1	0 5/8	
			13/23	ac5	6	PL 3/4 x 7 (A36)	1	0 5/8	
			3/4	ad5	1	W10x100	15	3 1/8	BEV.2E.;PREP.2E.
			14/11	af5	1	PL 3/4 x 3 (A36)	0	3	
			13/21	ag5	2	PL 3/4 x 7 (A36)	1	0 5/8	
			15/21	ah5	6	PL 1/4 x 8 7/8 (A36)	0	10 1/4	BENT
			15/23	al	2/2	PL 1/4 x 11 1/2 (A36)	1	6 ±	BENT

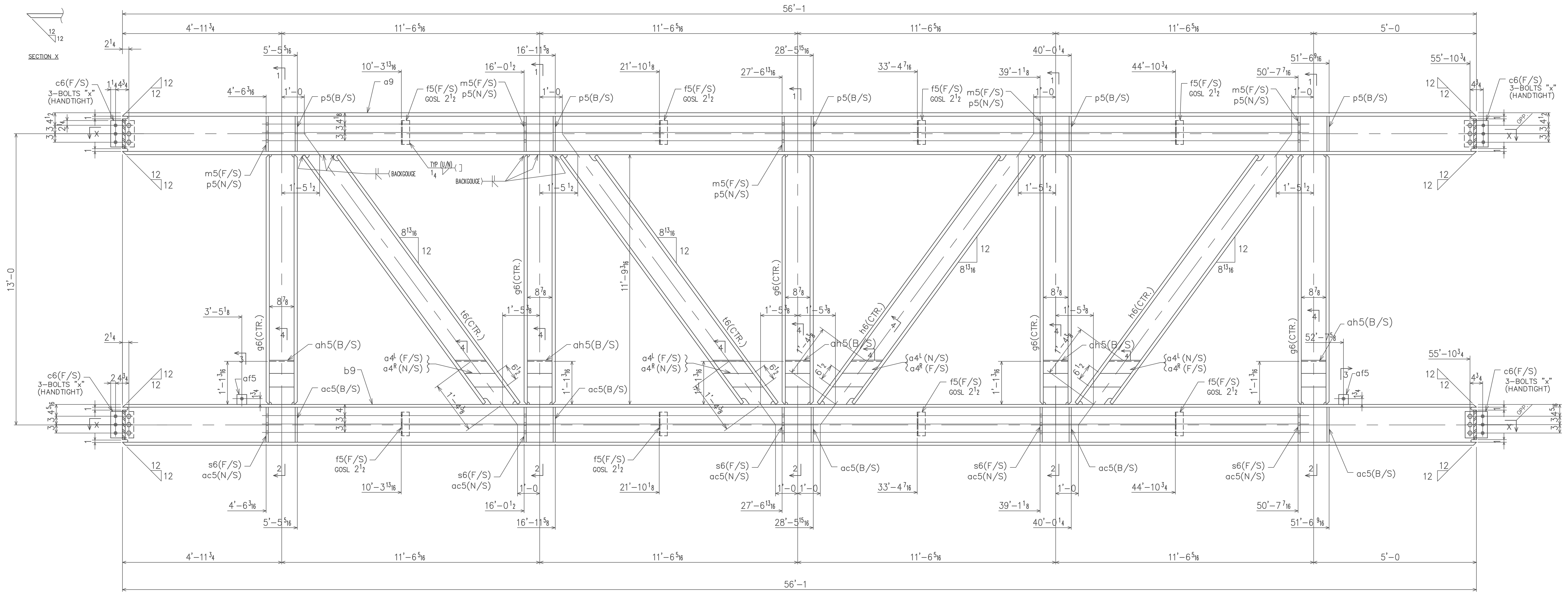
FIELD BOLTS	18	3/4	A325	x 2	W/DN	12	3/4	A325	x 2 1/4	W/DN	3	3/4	A325	x 2 1/2	W/DN
	4	3/4	A325 <td>x 3</td> <td>W/DN</td> <td>8</td> <td>7/8</td> <td>A325 <td>x 2 3/4</td> <td>W/DN</td> <td>6</td> <td>3/4</td> <td>A325 <td>x 2 1/2</td> <td>W/DN</td> </td></td>	x 3	W/DN	8	7/8	A325 <td>x 2 3/4</td> <td>W/DN</td> <td>6</td> <td>3/4</td> <td>A325 <td>x 2 1/2</td> <td>W/DN</td> </td>	x 2 3/4	W/DN	6	3/4	A325 <td>x 2 1/2</td> <td>W/DN</td>	x 2 1/2	W/DN

PAIN	
MATERIAL	A992 U/NOTED
HOLES	13/16 U/NOTED
ELECTRODES	E70XX
TOTAL WEIGHT	
DIAG. REF #	
	NO DATE DESCRIPTION NO DATE DESCRIPTION
	REVISIONS

CONTRACT NO  
2228-050

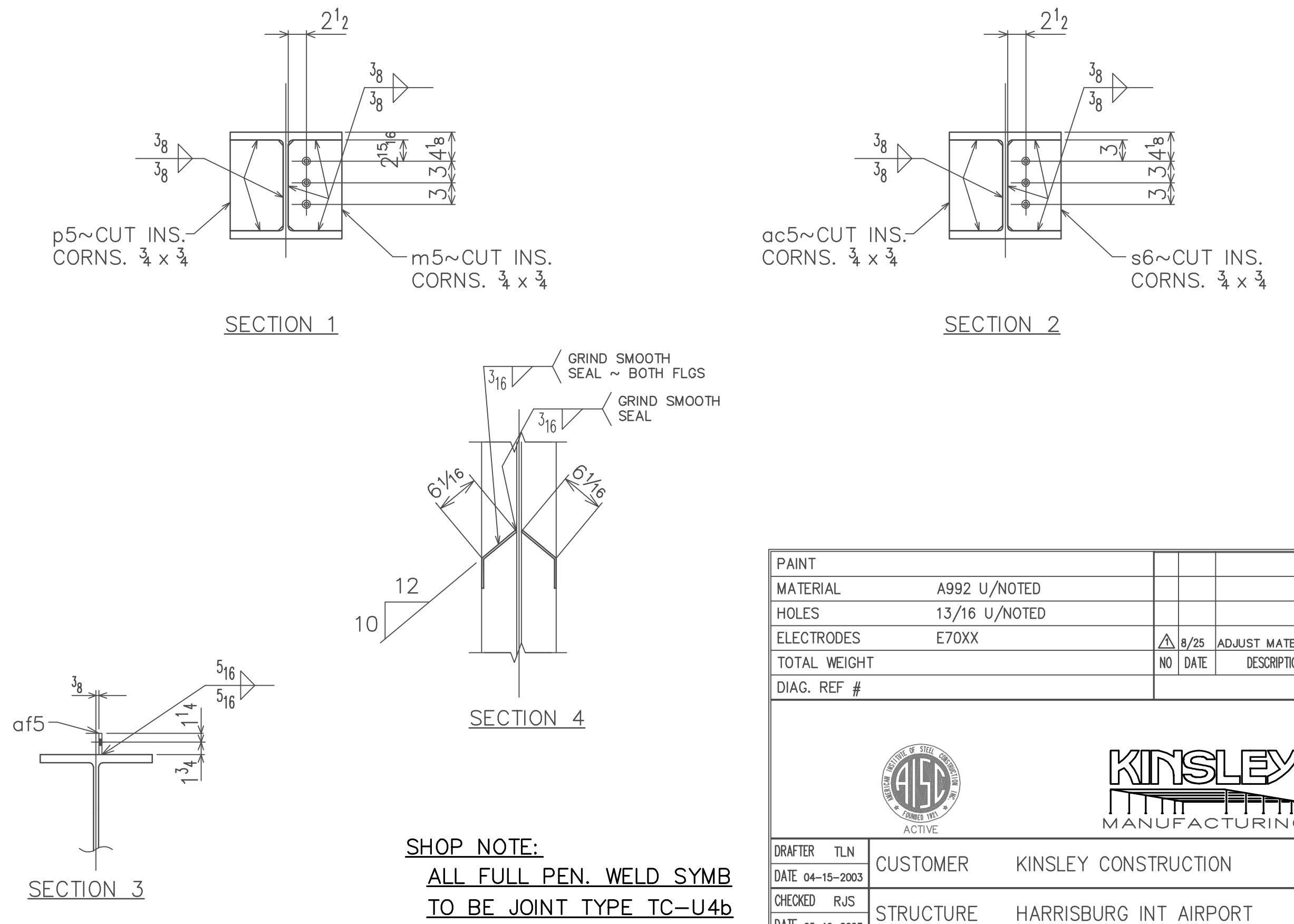
DWG NO  
8

DRAFTER TLN	CUSTOMER KINSLEY CONSTRUCTION	DATE 04-15-2003	STRUCTURE HARRISBURG INT AIRPORT
CHECKED RJS			
DATE 05-19-2003			



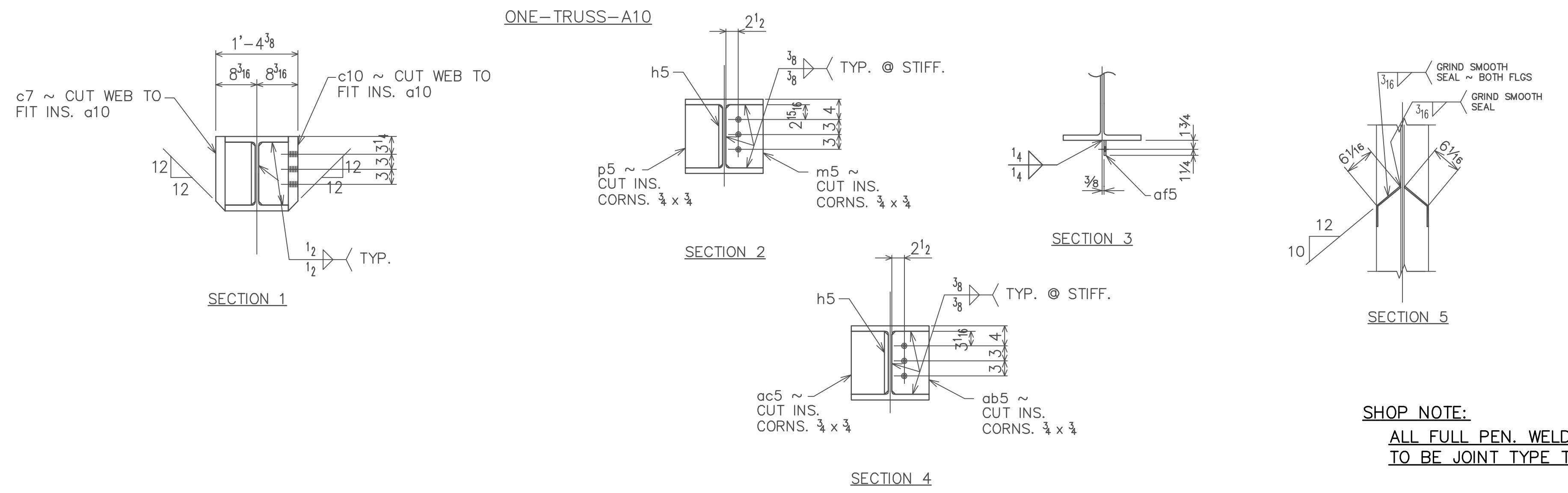
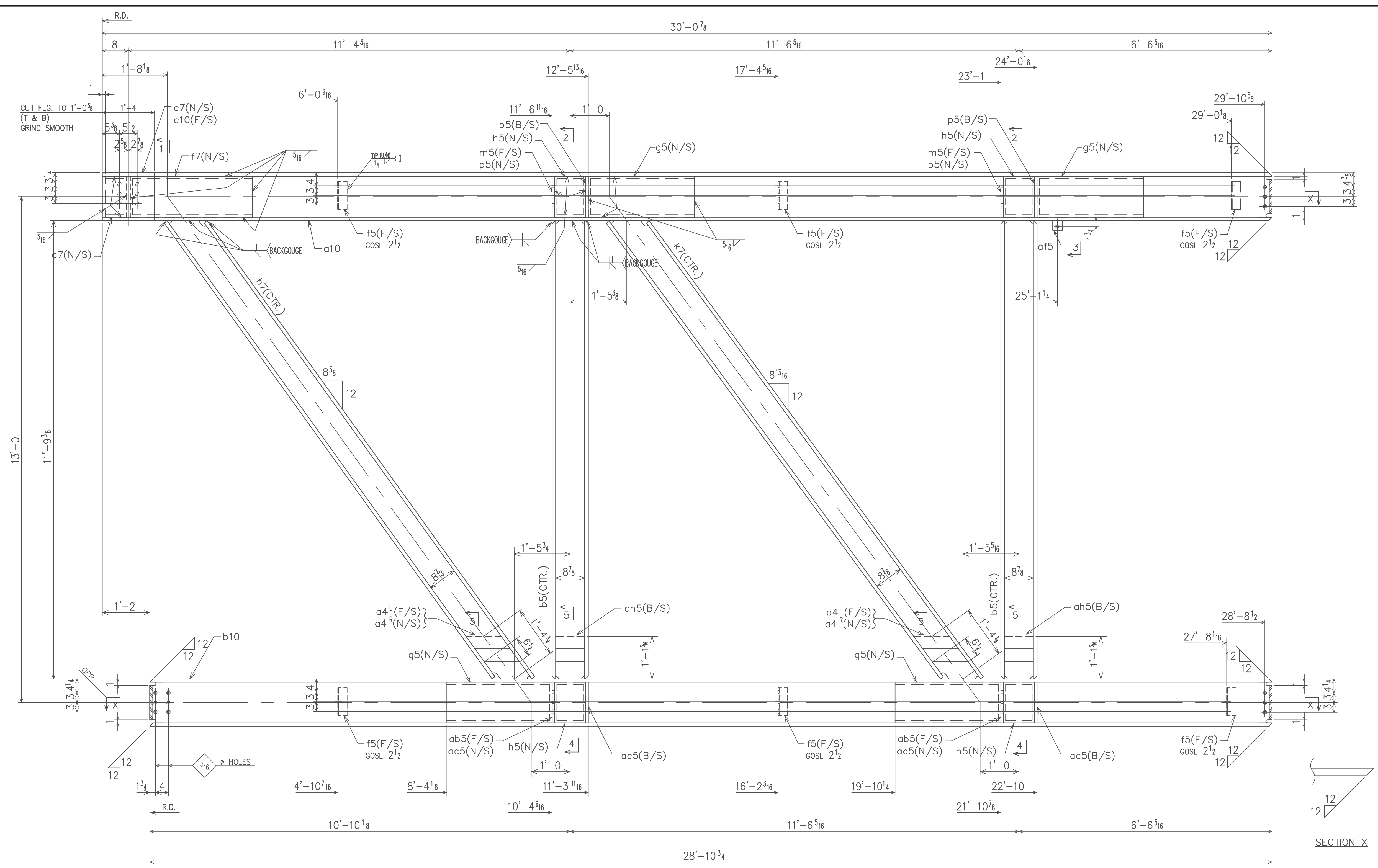
ONE-TRUSS-A9

BILL OF MATERIAL										
1A	1B	1C	ABM	MARK	NO REQ'D	DESCRIPTION	LENGTH FT	IN	TOTAL WEIGHT	REMARKS
1				A9	ONE	TRUSS				
	2/1			a9	1	W14x159	56	1		
	2/8			b9	1	W14x132	56	1		
	14/9			c6	8	PL 1/2 x 7 1/4 (A36)	0	10 1/2		
	13/17			m5	5	PL 3/4 x 7 3/8 (A36)	1	0 5/8		
	13/15			p5	15	PL 3/4 x 7 3/8 (A36)	1	0 5/8		
	3/5			g6	5	W10x100	11	9 3/8		PREP. 2E.
	3/4			h6	2	W10x100	15	1 1/2		BEV. 2E. PREP. 2E.
	3/4			t6	2	W10x100	15	1 1/2		BEV. 2E. PREP. 2E.
	15/21			ah5	10	PL 1/2 x 8 7/8 (A36)	0	10 1/4		BENT
	15/23			a4 <sup>R</sup>	4/4	PL 1/2 x 11 1/2 (A36)	1	6 ±		BENT
	16/17			"x"	12	3/4" A325 BOLT	0	2 1/2		W/N & DT1
	14/11			af5	2	PL 3/8 x 3 (A36)	0	3		
	13/19			s6	5	PL 3/4 x 7 (A36)	1	0 5/8		
	13/23			ac5	15	PL 3/4 x 7 (A36)	1	0 5/8		
	16/5			f5	8	L4 x 3 x 3/8 (A36)	0	8 1/2		
FIELD BOLTS	30			3/4 A325 x 2 1/4	W/DI	24	3/4 A325 x 2	W/DI		
				14	3/4 A325 x 2 1/2	W/DI				



SHOP NOTE:  
ALL FULL PEN. WELD SYMB  
TO BE JOINT TYPE TC-U4b

PAINT					
MATERIAL	A992 U/NOTED				
HOLES	13/16 U/NOTED				
ELECTRODES	E70XX	8/25	ADJUST MATERIAL		
TOTAL WEIGHT		NO DATE	DESCRIPTION	NO DATE	DESCRIPTION
DIAG. REF #		REVISIONS			
		DRAFTER	TLN	CUSTOMER	KINSLEY CONSTRUCTION
		DATE	04-15-2003		
		CHECKED	RJS	STRUCTURE	HARRISBURG INT AIRPORT
		DATE	05-19-2003		
				CONTRACT NO	2228-050
				DWG NO	9



**SHOP NOTE:**  
ALL FULL PEN. WELD SYMB  
TO BE JOINT TYPE TC-U4b

**BILL OF MATERIAL**

1A	1B	1C	ABM	MARK	NO	REO'D	DESCRIPTION	LENGTH		TOTAL	REMARKS
								FT	IN		
1			A10	ONE			TRUSS				
			3/5	b5	2		W10x100	11	9 3/8		PREP.2E.
			3/4	k7	1		W10x100	15	1 3/4		BEV.2E.;PREP.2E.
			16/5	f5	6		L 4x3 x 3/8 (A36)	0	8 1/2		
			13/5	g5	4		PL 1x12 1/2 (A36)	2	8 3/4		
			13/7	h5	4		PL 1x9 3/8 (A36)	1	0 1/2		
			13/17	m5	2		PL 3/4x7 3/8 (A36)	1	0 5/8		
			13/15	p5	6		PL 3/4x7 3/8 (A36)	1	0 5/8		
			13/25	ab5	2		PL 3/4x7 (A36)	1	0 5/8		
			13/23	ac5	6		PL 3/4x7 (A36)	1	0 5/8		
			2/5	a10	1		W14x145	30	0 5/8		
			2/12	b10	1		W14x120	28	10 3/4		
			1/15	c7	1		Pc. W14x257	1	2 3/4		7 1/8 DEEP
			13/11	d7	1		PL 1 x 6 1/2 (A36)	1	0 1/2		
			13/3	f7	1		PL 1 x 12 1/2 (A36)	3	1 3/4		
			1/15	c10	1		Pc. W14x257	1	2 3/4		7 1/8 DEEP
			3/4	h7	1		W10x100	15	0 1/2		BEV.2E.
			14/11	af5	1		PL 3/4x3 (A36)	0	3		
			15/21	ah5	2		PL 3/4x8 7/8 (A36)	1	2 3/4		
			15/23	a4	2/2		PL 1/4x11± (A36)	1	6±		BENT

FIELD BOLTS	18	3/4 A325 x 2	W/DN	12	3/4 A325 x 2 1/4	W/DN	6	3/4 A325 x 3 1/2	W/DN
PAINT									
MATERIAL	A992 U/NOTED								
HOLES	13/16 U/NOTED								
ELECTRODES	E70XX								
TOTAL WEIGHT	NO DATE ADJUST MATERIAL NO DATE DESCRIPTION								
DIAG. REF #	REVISIONS								



**KINSLEY**  
MANUFACTURING

DRAFTER TLN	CUSTOMER	KINSLEY CONSTRUCTION	CONTRACT NO	2228-050
DATE 04-15-2003	STRUCTURE	HARRISBURG INT AIRPORT	DWG NO	10
CHECKED RJS				
DATE 05-19-2003				