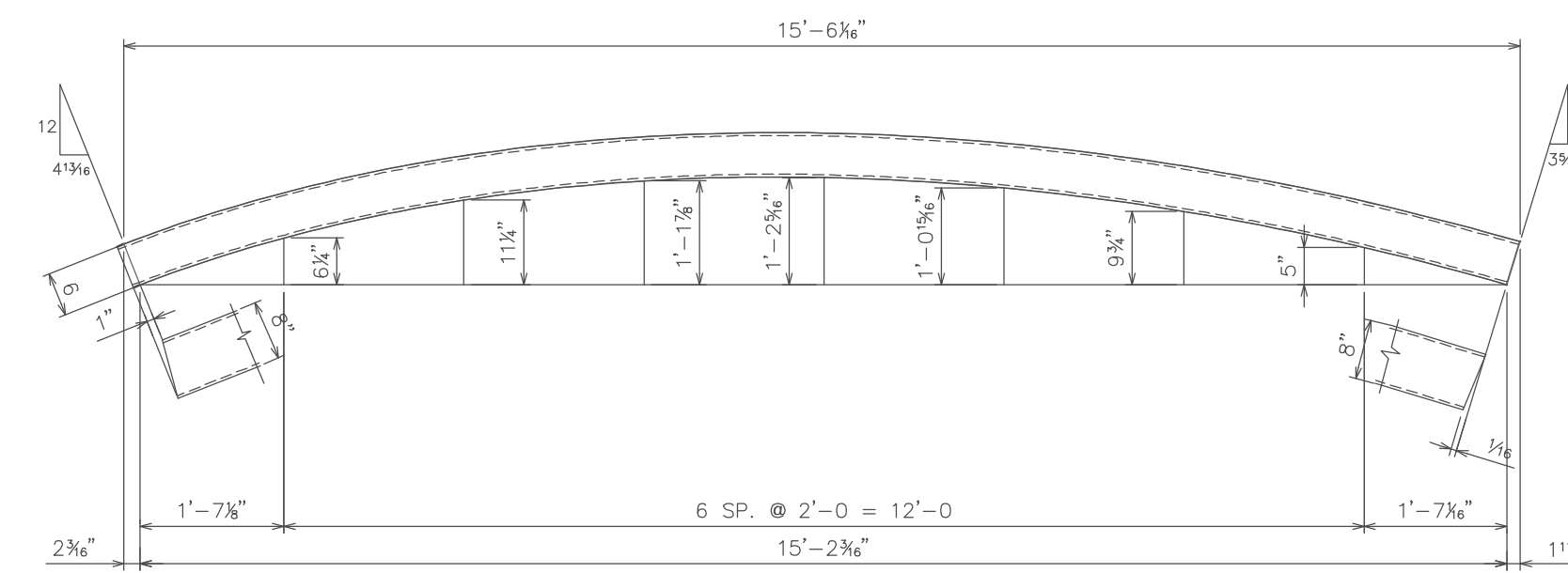
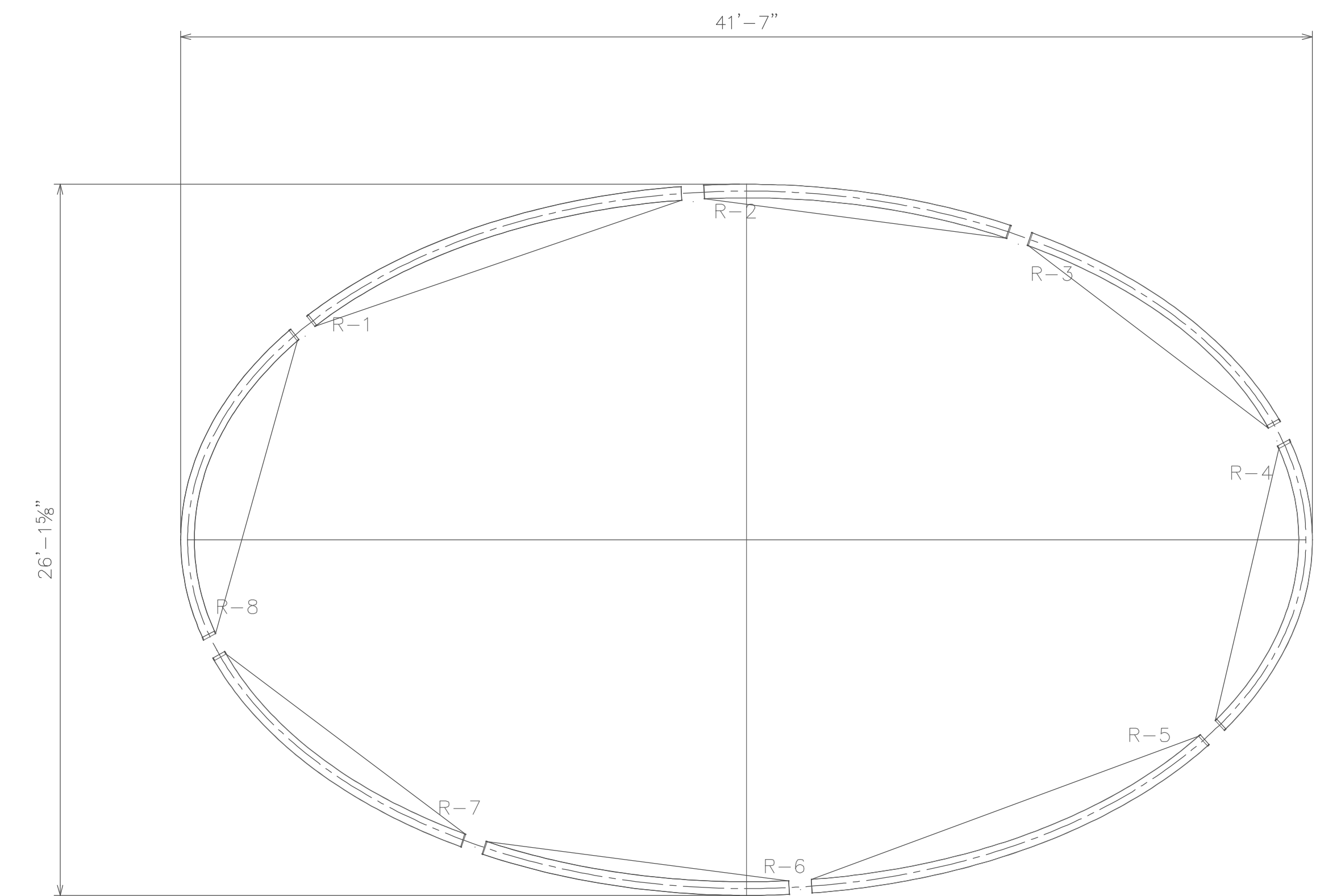


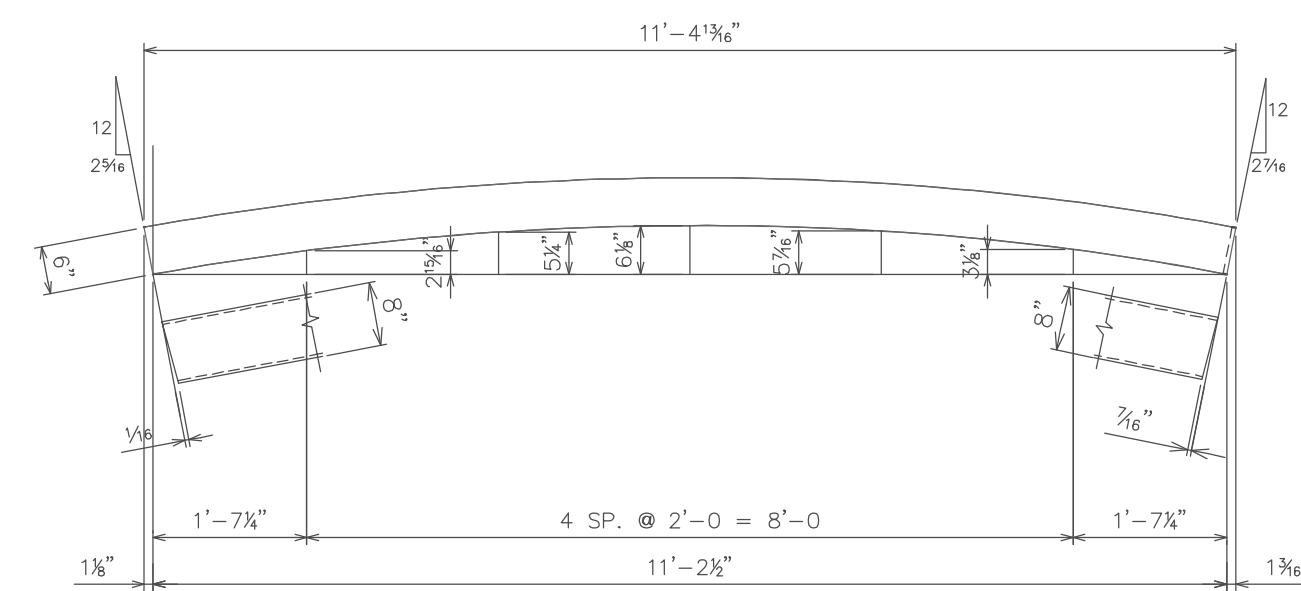
ONE - HSS8x6x3/8 x 14'-9" (CUT 14'-9 3/4")(BEV.2E.) - R-1



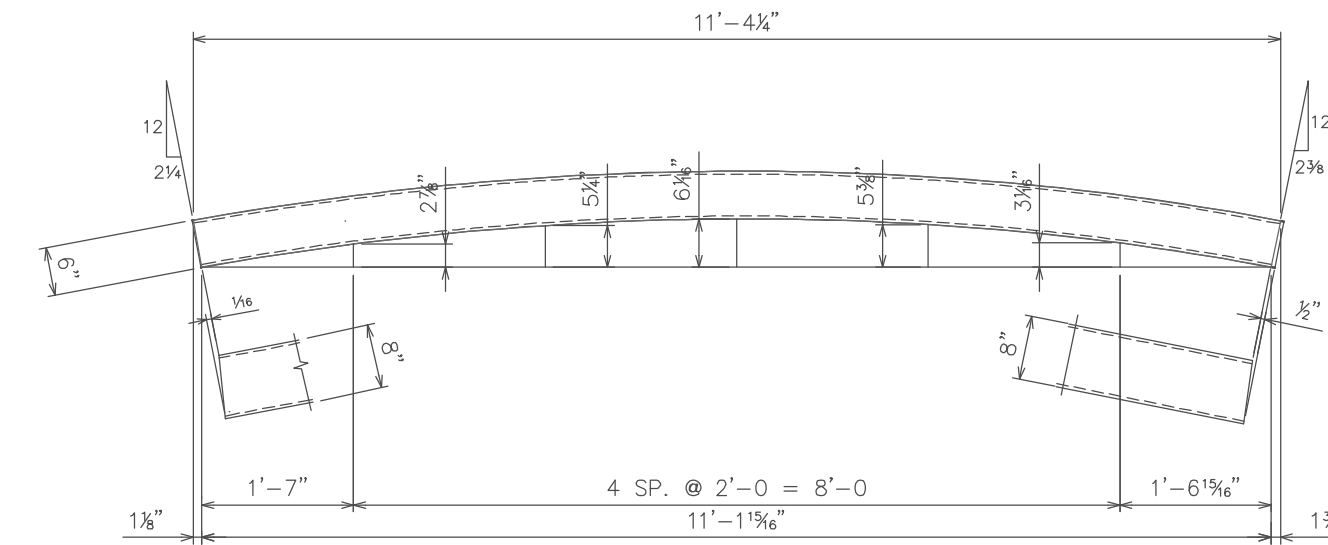
ONE - HSS8x6x3/8 x 15'-9 1/4" (CUT 15'-10 1/4")(BEV.2E.) - R-5



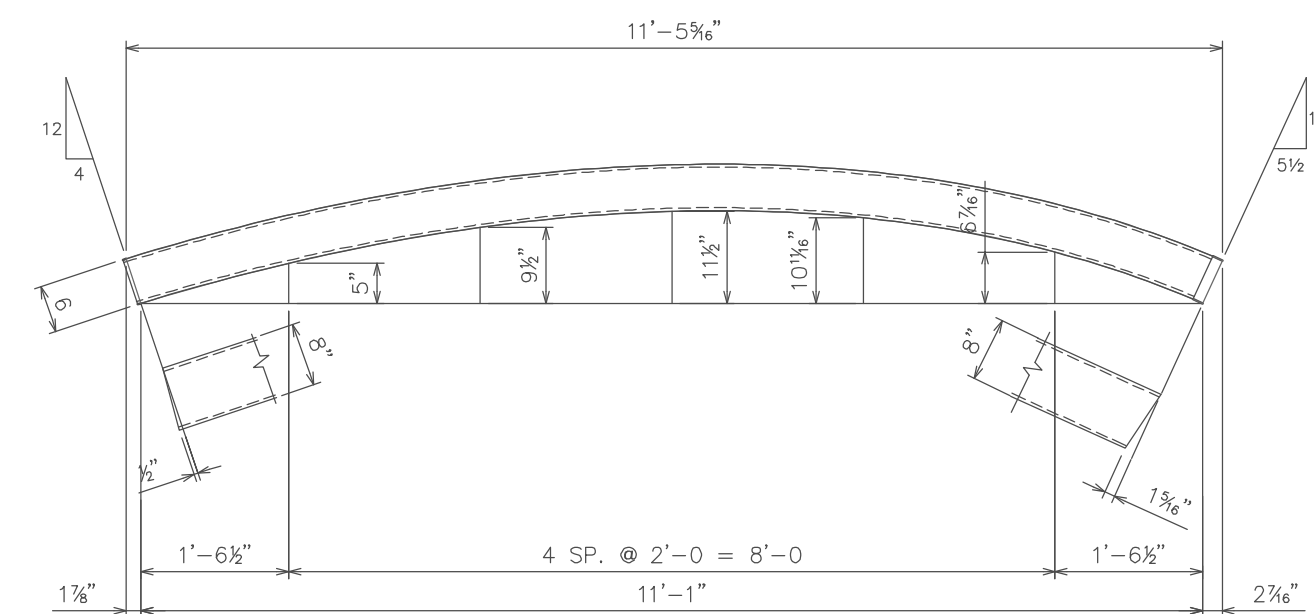
DEVELOPED VIEW OF ROOF TUBES



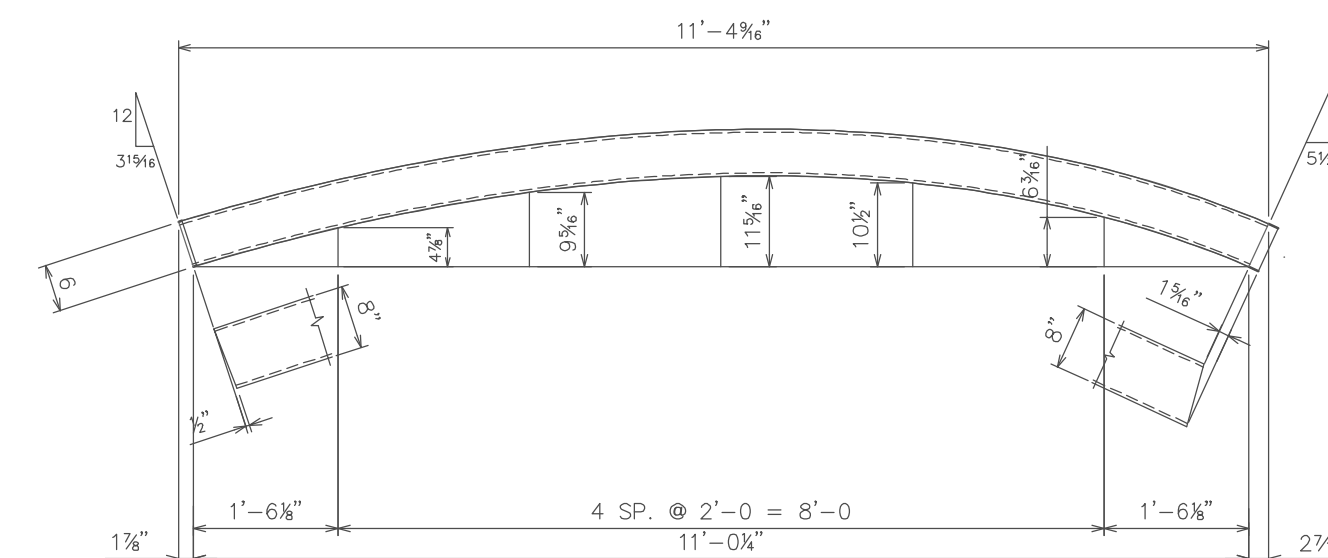
ONE - HSS8x6x3/8 x 11'-5 3/4" (BEV.2E.) - R-2



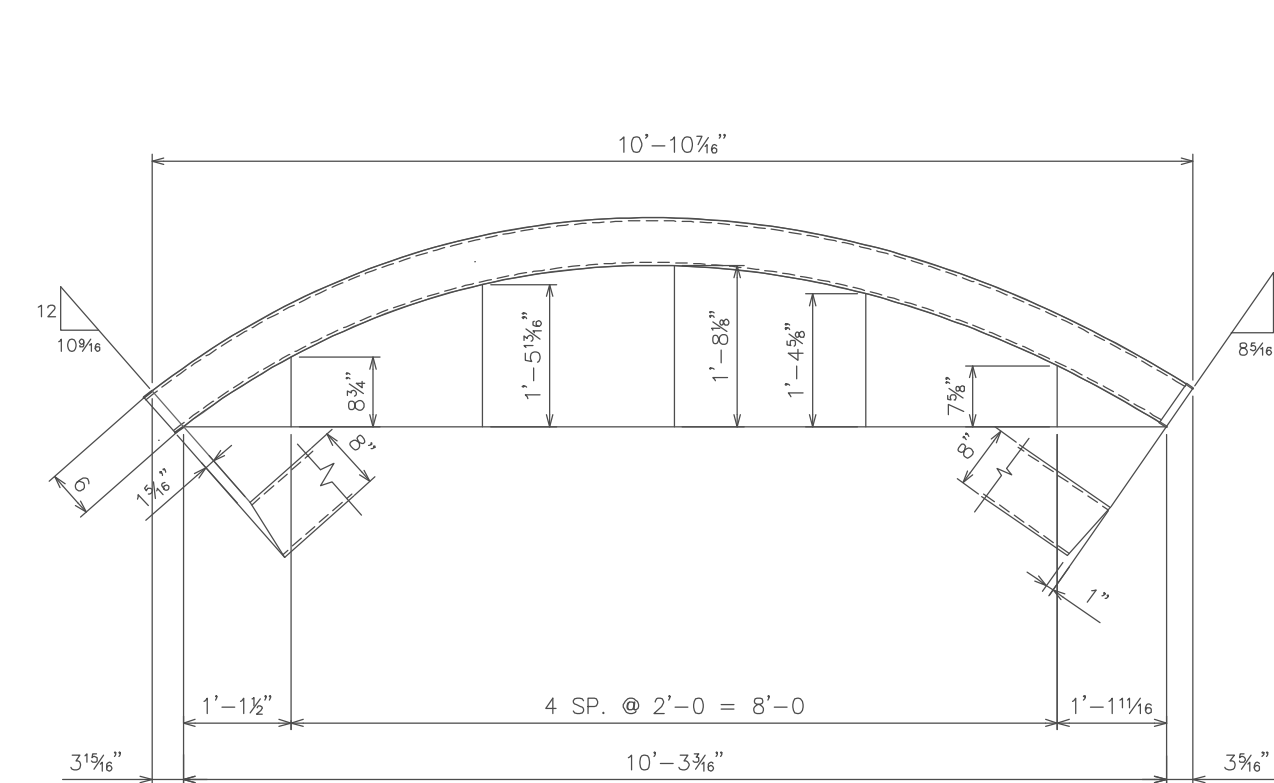
ONE - HSS8x6x3/8 x 11'-5" (CUT 11'-5 3/4")(BEV.2E.) - R-6



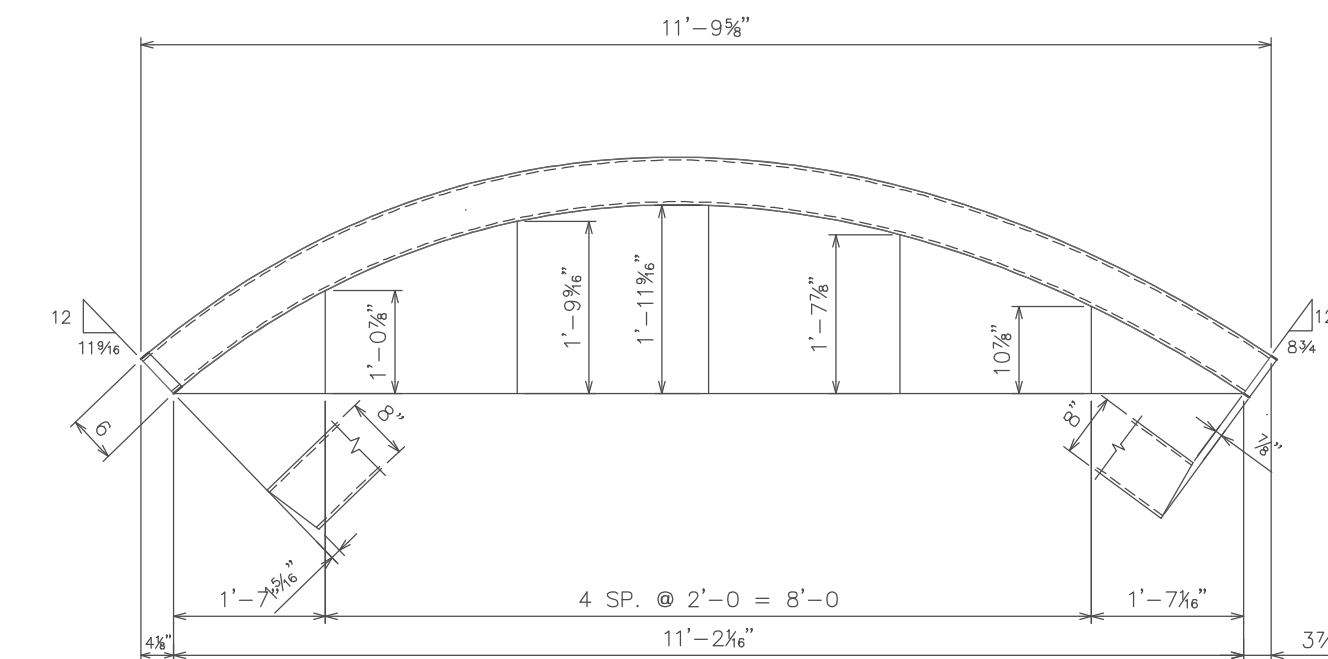
ONE - HSS8x6x3/8 x 11'-8 1/4" (CUT 11'-8 3/4")(BEV.2E.) - R-3



ONE - HSS8x6x3/8 x 11'-7 3/4" (CUT 11'-8 3/4")(BEV.2E.) - R-7



ONE - HSS8x6x3/8 x 11'-7 3/4" (CUT 11'-8 3/4")(BEV.2E.) - R-4



ONE - HSS8x6x3/8 x 12'-9" (CUT 12'-9 3/4")(BEV.2E.) - R-8

NOTE: ALL DIMENSIONS ARE AT TOP OF TUBE

ALL MATERIAL TO BE ASTM A500 GRADE B TUBING

This Drawing Represents An Approval Of The Following
 JOIST DECK
 STRUCTURAL STEEL

SUBMISSION NO. _____
 DATE: _____

In order for Schlosser Steel to meet our committed delivery on this project, completely approved drawings with all requested information must be returned to our office by _____. Delays beyond this date will result in delivery delays.

REVISIONS		
REV. NO.	DATE	DESCRIPTION

PRINT RECORD			
NO.	DT.	TO	FOR

SCHLOSSER STEEL, Inc.
 Structural Steel Fabricators
 2641 Township Line Road Hatfield, Pa.

ROLLED TUBE MILL ORDER
 LEXUS OF LEHIGH VALLEY
 SOUTH WHITEHALL TWP., PA

WELD ELECT: E70xx(LH)
 HOLES: 1 3/8" Ø (U/N)
 MADE BY: RGY
 CHK'D. BY: _____

ORDER NO. C5441
 SHEET NO. M0-2
 DATE 5-2-06

